

# 水平除膠渣/化學沉銅 Horizontal Desmear/PTH

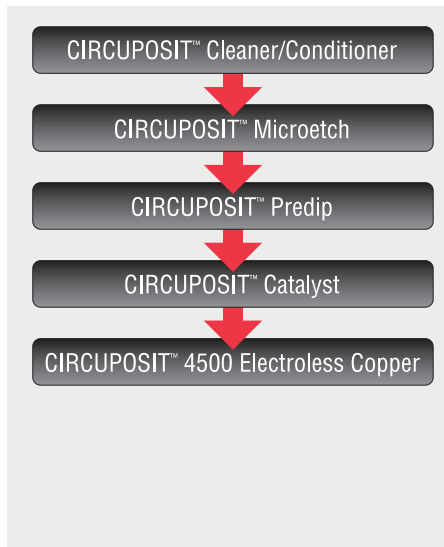


## CIRCUPOSIT™ 4000 Horizontal Desmear / PTH

### Advantages 優點

- Capable of conveying thin boards (thickness: 50 µm)  
適用於薄板(厚度: 50 µm)連續生產
- High productivity due to shortened processing time  
較短的反應時間可以提高產量
- Improvement of working environment from closed system  
密閉式反應改善工作環境
- Applicable to wide variety of resin such as FR-4, High Tg, and polyimide  
可應用於不同的樹脂材料,如FR-4, High Tg, 和polyimide

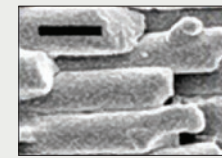
### Process 製程



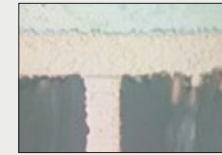
### Characterization 特性描述



Excellent coverage in microvia  
深盲孔優異的鍍層覆蓋能力



Excellent glass fiber coverage and ultra fine grain structure  
優異的玻璃纖維覆蓋能力及細緻的化銅沉積



Ultimate in PTH reliability  
優異的化銅信賴性

# 泛用型化學沉銅 Universal Electroless Copper

## CIRCUPOSIT™ 3350-1 Electroless Copper

### Features and Benefits 特長及優點

- A universal electroless copper process  
可被廣泛應用於各式設備之化學銅製程
- Reduce chemistry volumes  
減少藥液使用量
- Reduce catalyst strength  
減少催化劑藥液強度
- Steady state operation  
槽液操作穩定
- Exceptional performance and reliability  
具有卓越的產品表現及信賴性
- Global customer reference list  
客戶遍及全球

