

GENERAL NOTES

*SEAL ALL TYVEK® JOINTS AND PENETRATIONS WITH APPROVED TAPE.

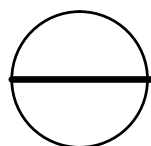
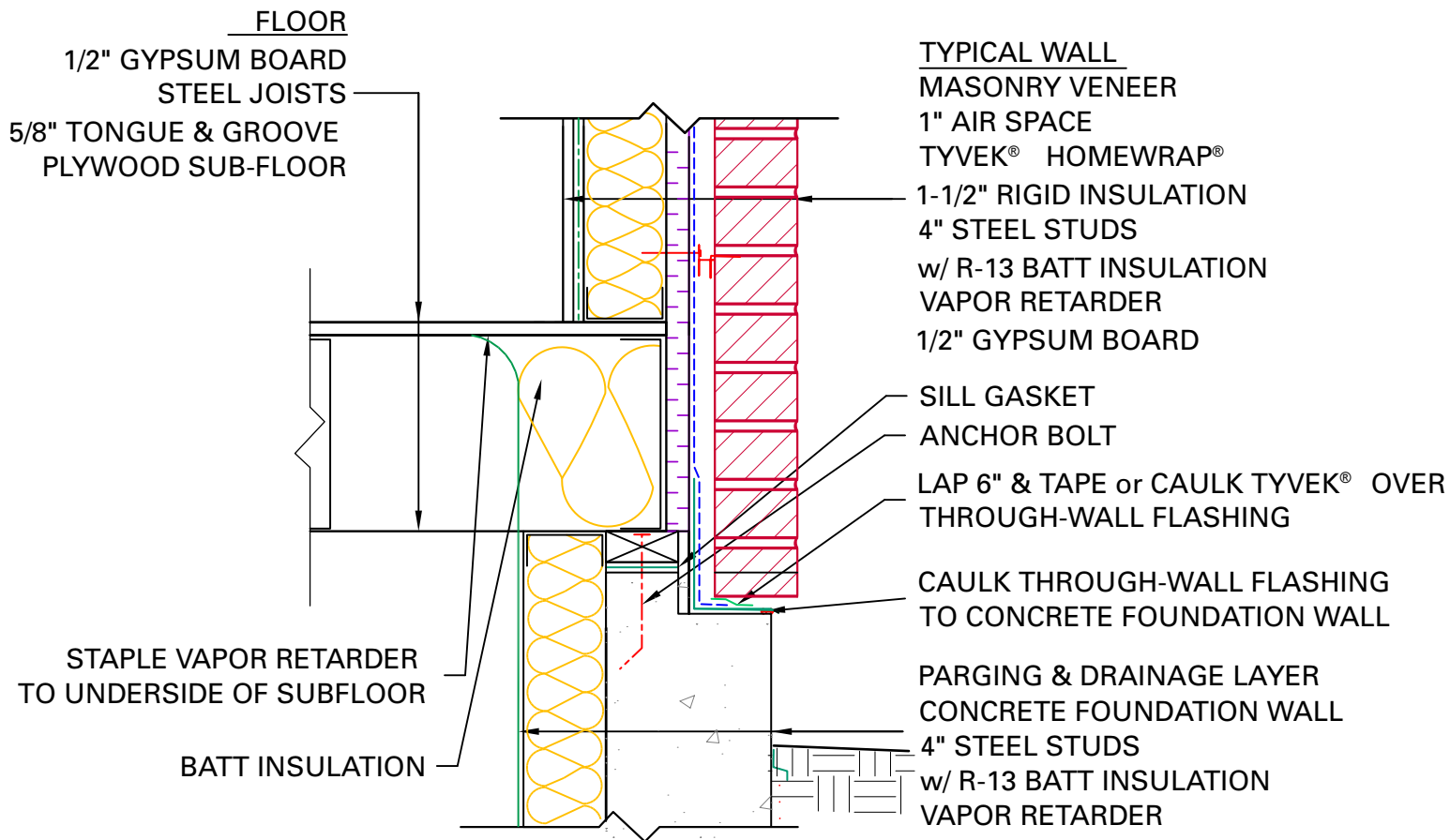
(ex. DUPONT™ CONTRACTOR TAPE)

*FASTEN TYVEK® AND RIGID INSULATION TO STEEL STUDS

USING SCREWS W/ WASHERS.(ex. DUPONT™ WRAPCAPS)

*SEAL OR GASKET BRICK TIES AT THE FACE OF TYVEK®

*LOCAL LAWS, ZONING, AND BUILDING CODES VARY AND THEREFORE GOVERNS OVER MATERIAL SELECTION AND DETAILING SHOWN BELOW.



BASE OF WALL DETAIL

RESIDENTIAL STEEL FRAME STRUCTURE w/ MASONRY VENEER (HEATING CLIMATE)