

GENERAL NOTES

*SEAL ALL TYVEK® JOINTS OR PENETRATIONS WITH APPROVED TAPE.

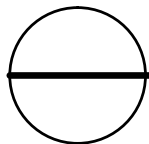
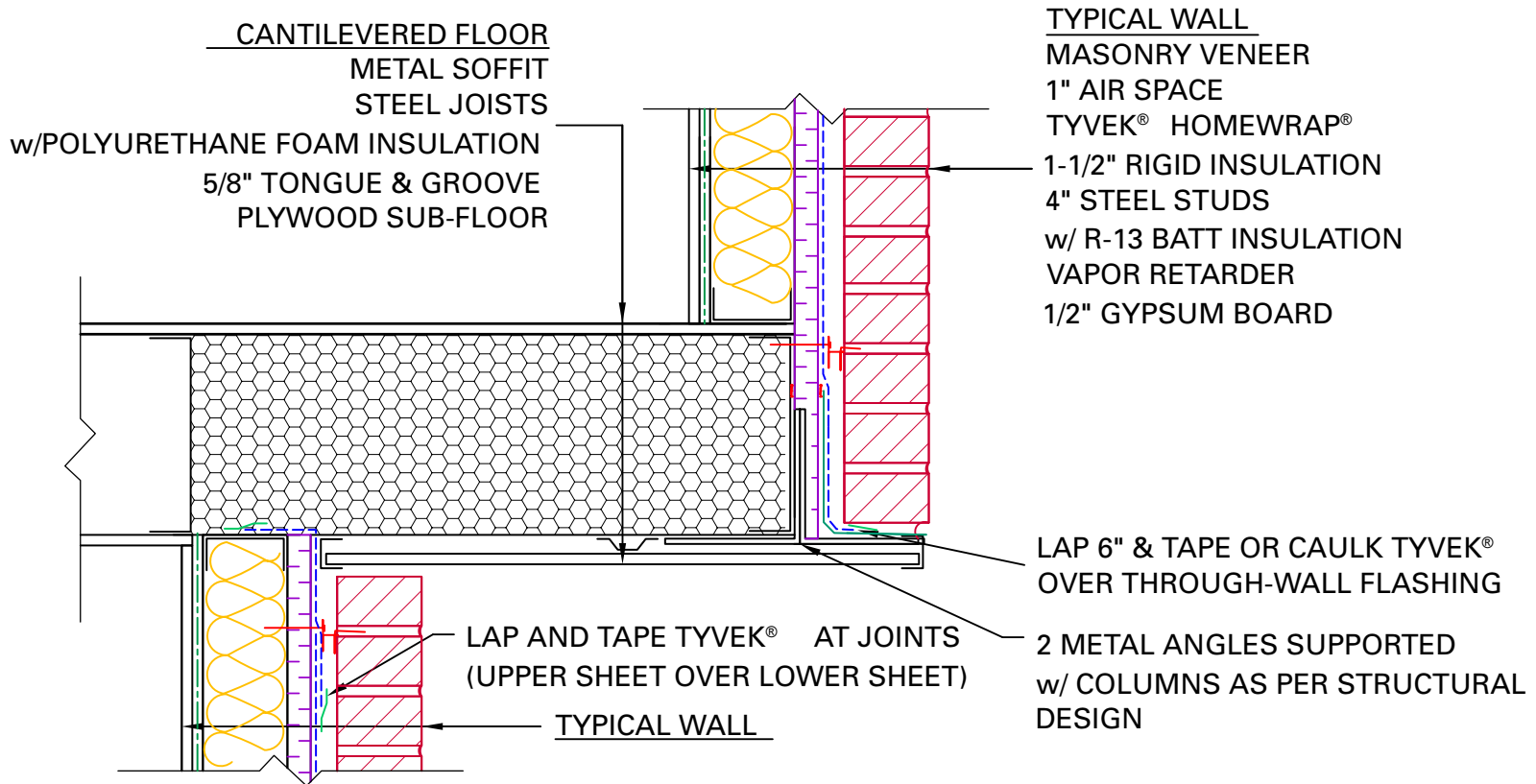
(ex. DUPONT™ CONTRACTOR TAPE)

*FASTEN TYVEK® AND RIGID INSULATION TO STEEL STUDS

USING SCREWS W/ WASHERS.(ex. DUPONT™ WRAPCAPS)

* SEAL OR GASKET BRICK TIES AT THE FACE OF TYVEK®

*LOCAL LAWS, ZONING, AND BUILDING CODES VARY AND THEREFORE GOVERNS OVER MATERIAL SELECTION AND DETAILING SHOWN BELOW.



CANTILEVERED FLOOR DETAIL

RESIDENTIAL STEEL FRAME STRUCTURE w/ MASONRY VENEER

(HEATING CLIMATE)