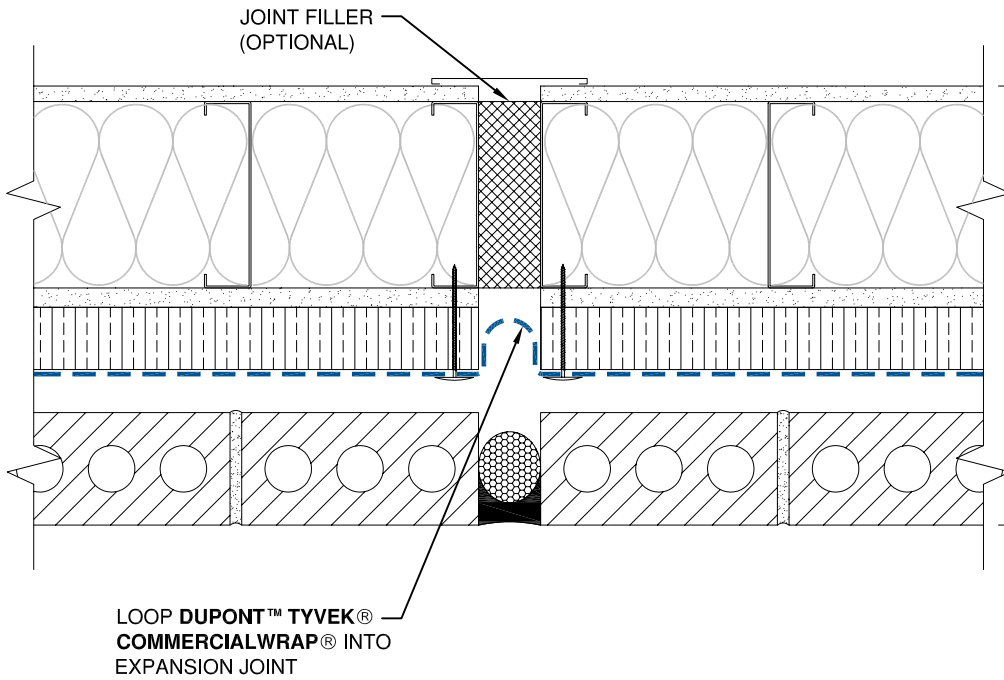


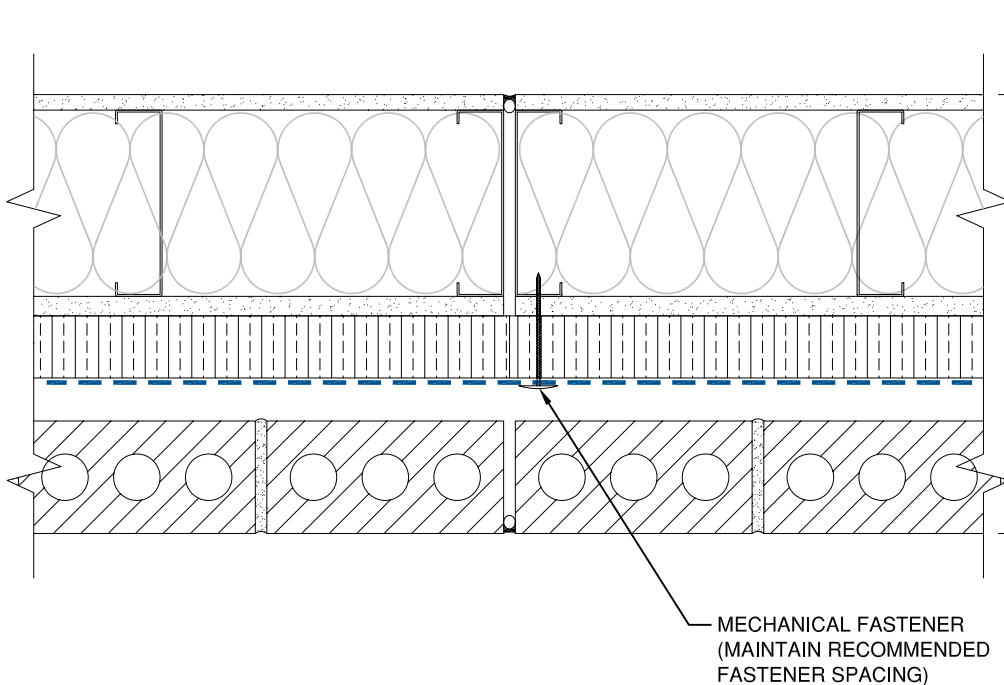
EXPANSION JOINT



TYPICAL WALL
 INTERIOR GYPSUM BOARD
 STEEL STUDS W/BATT INSULATION
 EXTERIOR GYPSUM BOARD
 MINERAL FIBER INSULATION
 (VAPOR PERMEABLE)
**DUPONT™ TYVEK®
 COMMERCIALWRAP®**
 AIR SPACE
 BRICK VENEER

NOTE:
 PROVIDE SUFFICIENT SLACK IN
 MEMBRANE AT EXPANSION JOINT
 TO ACCOMMODATE MOVEMENT.

CONTROL JOINT



TYPICAL WALL
 INTERIOR GYPSUM BOARD
 STEEL STUDS W/BATT INSULATION
 EXTERIOR GYPSUM BOARD
 MINERAL FIBER INSULATION
 (VAPOR PERMEABLE)
**DUPONT™ TYVEK®
 COMMERCIALWRAP®**
 AIR SPACE
 BRICK VENEER

NOTE

- 1) SEAL ALL DUPONT™ TYVEK® WEATHER BARRIER SEAMS AND REPAIR MINOR HOLES WITH DUPONT™ TYVEK® TAPE.
- 2) FASTEN DUPONT™ TYVEK® WEATHER BARRIER WITH RECOMMENDED FASTENERS AND SPACING.
- 3) INTERIOR VAPOR RETARDER MAY BE REQUIRED IN SOME REGIONS.
- 4) THIS INFORMATION IS PROVIDED BY DUPONT AS REFERENCE ONLY; PLEASE CONSULT LOCAL BUILDING CODES, REGULATIONS AND LAWS TO DETERMINE THE APPROPRIATE CONSTRUCTION METHODS AND MATERIALS NEEDED.

SCALE: NOT TO SCALE

REVISION DATE: 11/17/10

DRAWING: CW-BXO-207

EXPANSION JOINT / CONTROL JOINT - METHOD 1
 BRICK VENEER / EXTERIOR INSULATION (WRAP OVER) / STEEL STUD WALL



Tyvek.