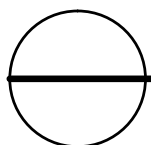
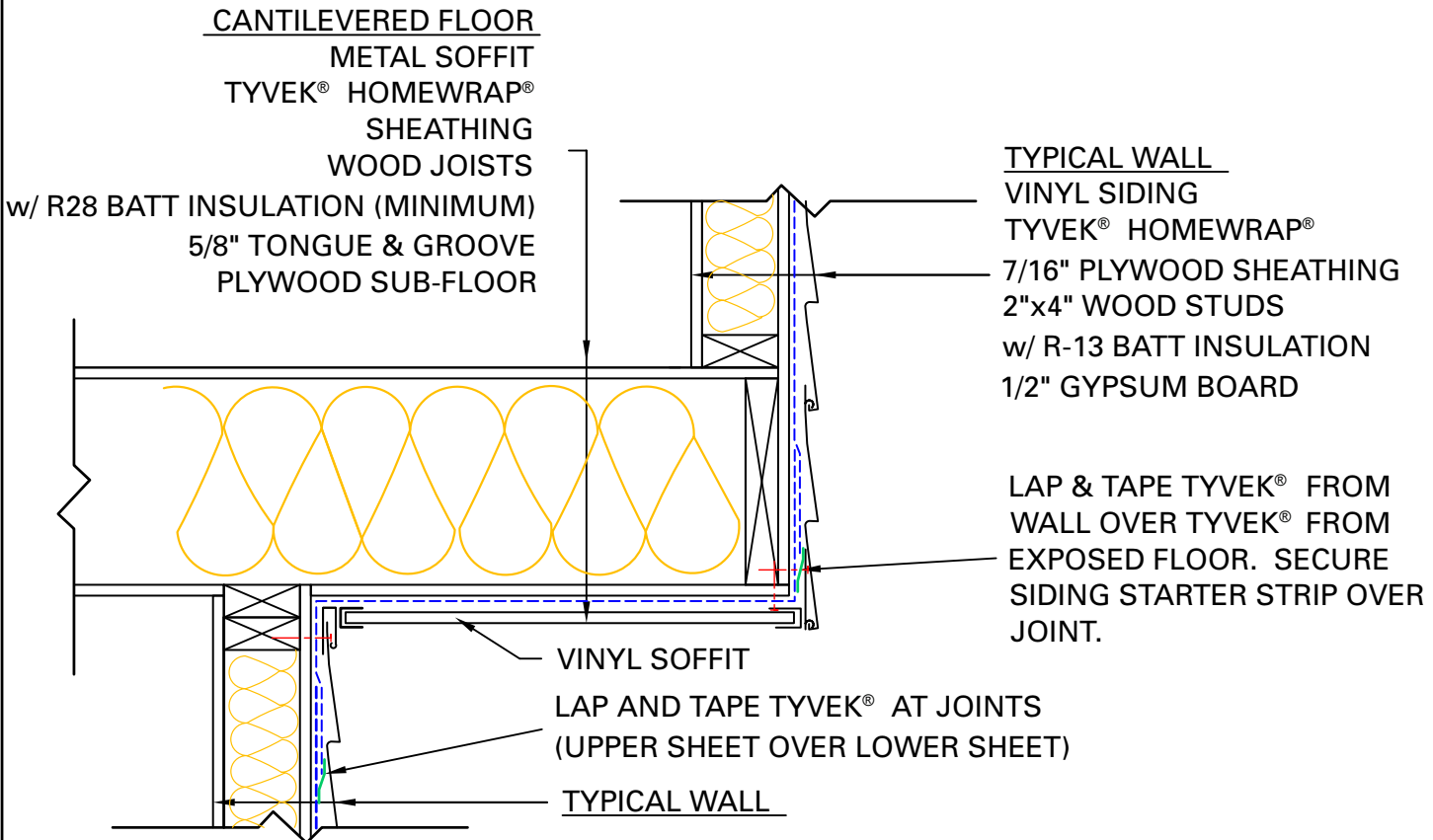


GENERAL NOTES

- *SEAL ALL TYVEK® JOINTS OR PENETRATIONS WITH APPROVED TAPE.
(ex. DUPONT™ CONTRACTOR TAPE).
- *FASTEN TYVEK® TO SHEATHING WITH LARGE HEAD NAILS
OR USE NAILS WITH LARGE PLASTIC WASHER HEADS. (ex. DUPONT™ WRAPCAPS)
- *LOCAL LAWS, ZONING, AND BUILDING CODES VARY AND
THEREFORE GOVERNS OVER MATERIAL SELECTION AND DETAILING SHOWN BELOW.



CANTILEVERED FLOOR DETAIL

RESIDENTIAL WOOD FRAME STRUCTURE w/ VINYL SIDING (COOLING CLIMATE)