

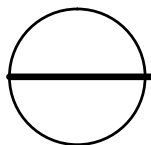
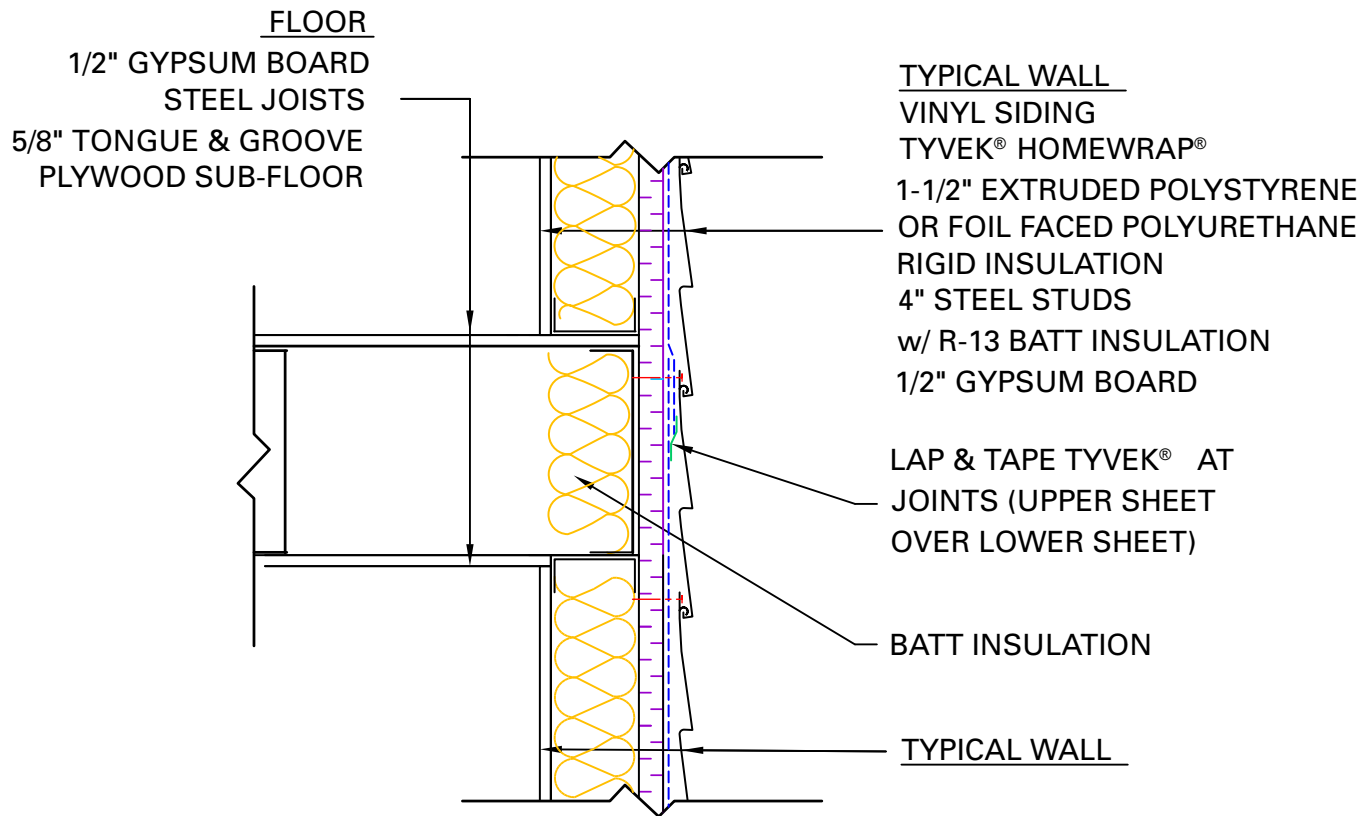
## GENERAL NOTES

\*SEAL ALL TYVEK® JOINTS OR PENETRATIONS WITH APPROVED TAPE.

(ex. DUPONT™ CONTRACTOR TAPE)

\*FASTEN TYVEK® AND RIGID INSULATION TO STEEL STUDS  
USING SCREWS W/ WASHERS. (ex. DUPONT™ WRAPCAPS)

\*LOCAL LAWS, ZONING, AND BUILDING CODES VARY AND  
THEREFORE GOVERNS OVER MATERIAL SELECTION AND DETAILING SHOWN BELOW.



## FLOOR/ WALL INTERFACE DETAIL

RESIDENTIAL STEEL FRAME STRUCTURE w/ VINYL SIDING (COOLING  
CLIMATE)