

**DUPONT™ TYVEK® FLUID APPLIED FLASHING AND JOINT COMPOUND**  
(2" ONTO FACE OF WALL)

**DUPONT™ SEALANT FOR TYVEK® FLUID APPLIED SYSTEM**  
(USE BACKER ROD AS NECESSARY)

GYPSUM BOARD

WINDOW FRAME

BACKER ROD AND SEALANT BY OTHERS

**DUPONT™ STRAIGHTFLASH™**

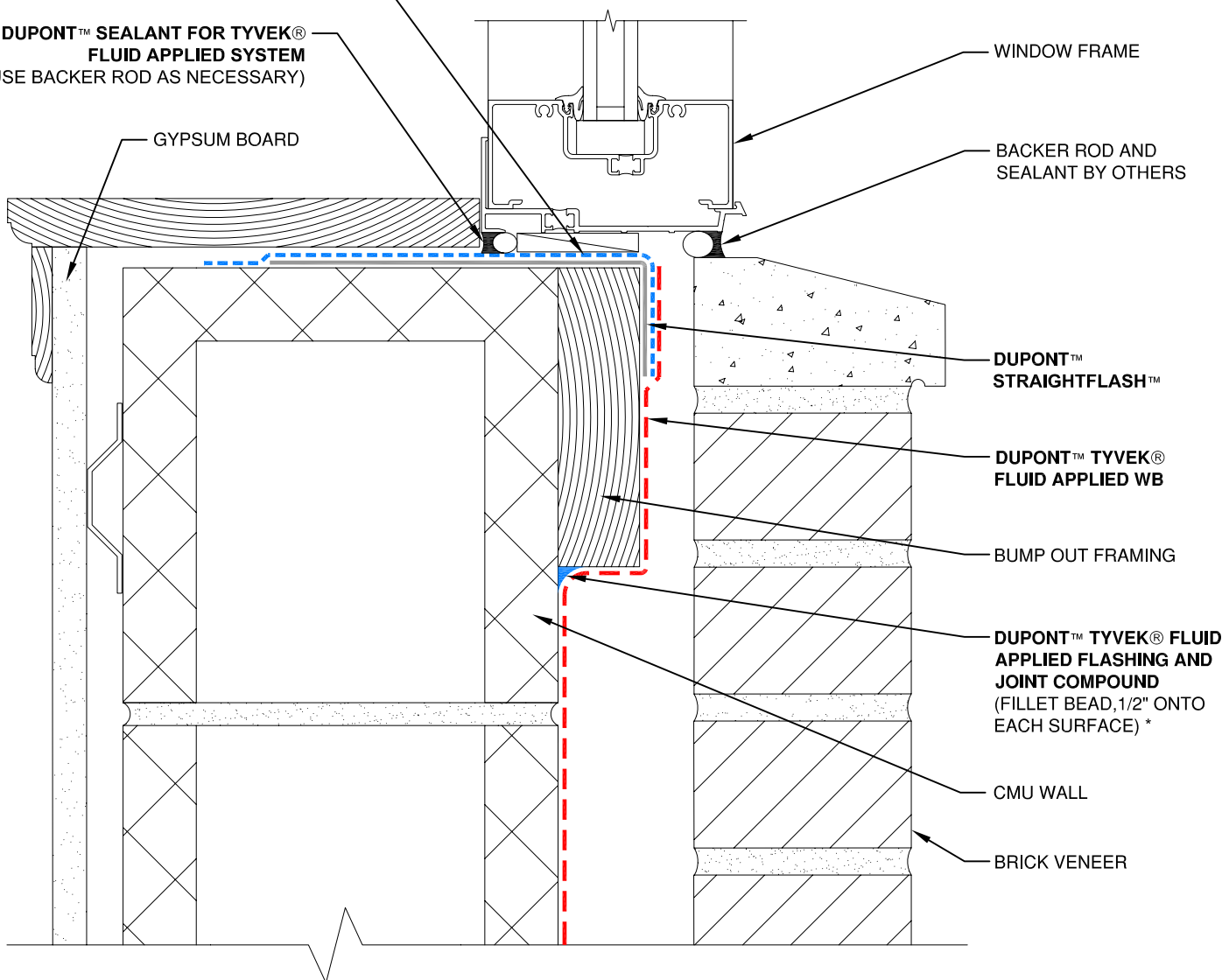
**DUPONT™ TYVEK® FLUID APPLIED WB**

BUMP OUT FRAMING

**DUPONT™ TYVEK® FLUID APPLIED FLASHING AND JOINT COMPOUND**  
(FILLET BEAD, 1/2" ONTO EACH SURFACE) \*

CMU WALL

BRICK VENEER



**NOTE**

1) INTERIOR VAPOR RETARDER MAY BE REQUIRED IN SOME REGIONS.  
2) THIS INFORMATION IS PROVIDED BY DUPONT AS REFERENCE ONLY; PLEASE CONSULT LOCAL BUILDING CODES, REGULATIONS AND LAWS TO DETERMINE THE APPROPRIATE CONSTRUCTION METHODS AND MATERIALS NEEDED.

\* DUPONT™ SEALANT FOR TYVEK® FLUID APPLIED SYSTEM OR DUPONT™ TYVEK® FLUID APPLIED FLASHING AND JOINT COMPOUND MAY BE USED.



**Tyvek.**  
FLUID APPLIED WB

SCALE: NOT TO SCALE

REVISION DATE: 4/28/10

DRAWING: FA-B-W104s

**BUMP OUT WINDOW SILL - METHOD 1**  
BRICK VENEER / CMU WALL / FLUID APPLIED FLASHING