

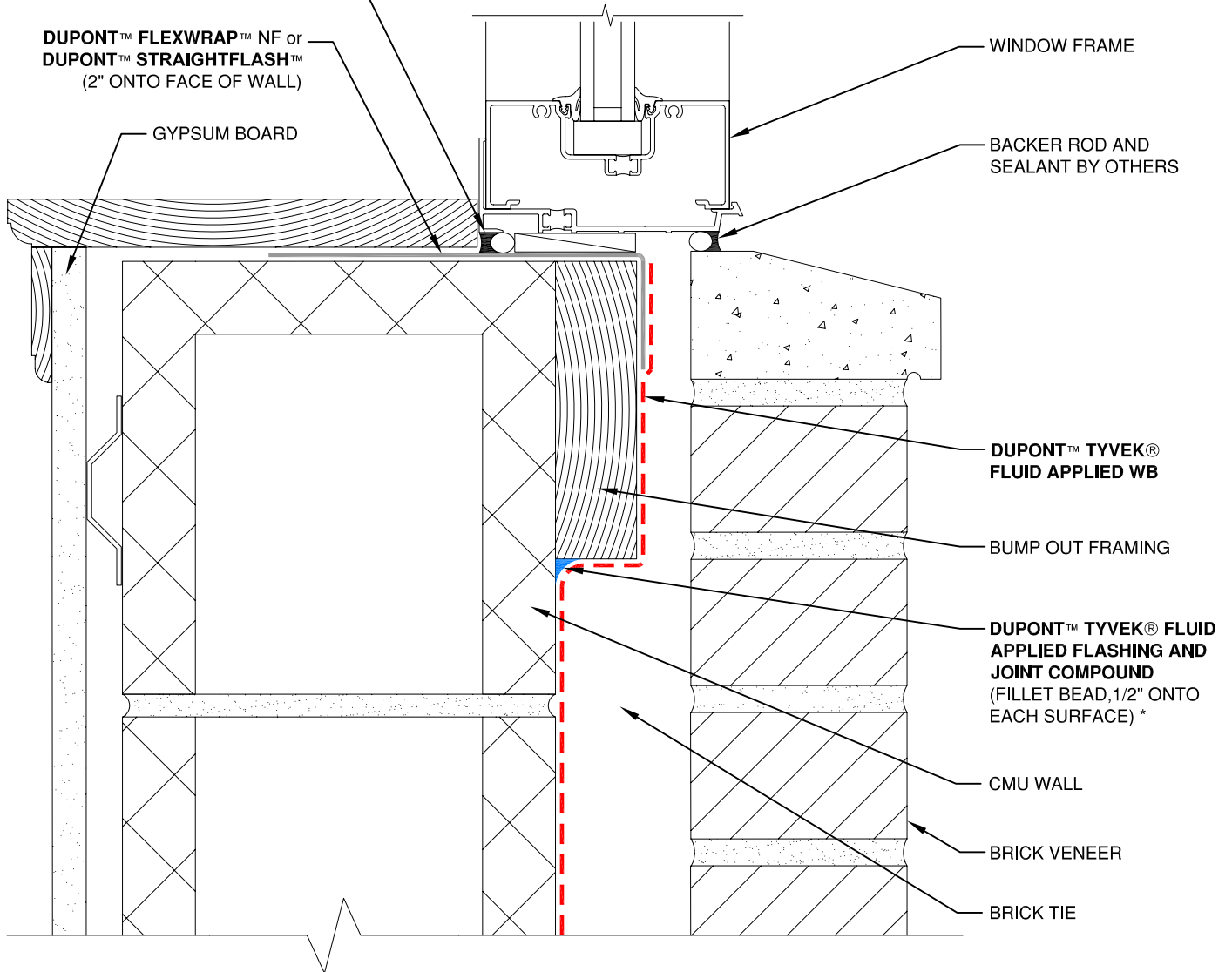
DUPONT™ SEALANT FOR TYVEK®
FLUID APPLIED SYSTEM
(USE BACKER ROD AS NECESSARY)

DUPONT™ FLEXWRAP™ NF or
DUPONT™ STRAIGHTFLASH™
(2" ONTO FACE OF WALL)

GYPSUM BOARD

WINDOW FRAME

BACKER ROD AND
SEALANT BY OTHERS



DUPONT™ TYVEK®
FLUID APPLIED WB

BUMP OUT FRAMING

DUPONT™ TYVEK® FLUID
APPLIED FLASHING AND
JOINT COMPOUND
(FILLET BEAD, 1/2" ONTO
EACH SURFACE) *

CMU WALL

BRICK VENEER

BRICK TIE

NOTE

- 1) INTERIOR VAPOR RETARDER MAY BE REQUIRED IN SOME REGIONS.
- 2) THIS INFORMATION IS PROVIDED BY DUPONT AS REFERENCE ONLY; PLEASE CONSULT LOCAL BUILDING CODES, REGULATIONS AND LAWS TO DETERMINE THE APPROPRIATE CONSTRUCTION METHODS AND MATERIALS NEEDED.

* DUPONT™ SEALANT FOR TYVEK® FLUID APPLIED SYSTEM OR
DUPONT™ TYVEK® FLUID APPLIED FLASHING AND JOINT COMPOUND MAY BE USED.



Tyvek.
FLUID APPLIED WB

SCALE: NOT TO SCALE

REVISION DATE: 4/28/10

DRAWING: FA-B-W105s

BUMP OUT WINDOW SILL - METHOD 2

BRICK VENEER / CMU WALL / SELF-ADHERED FLASHING