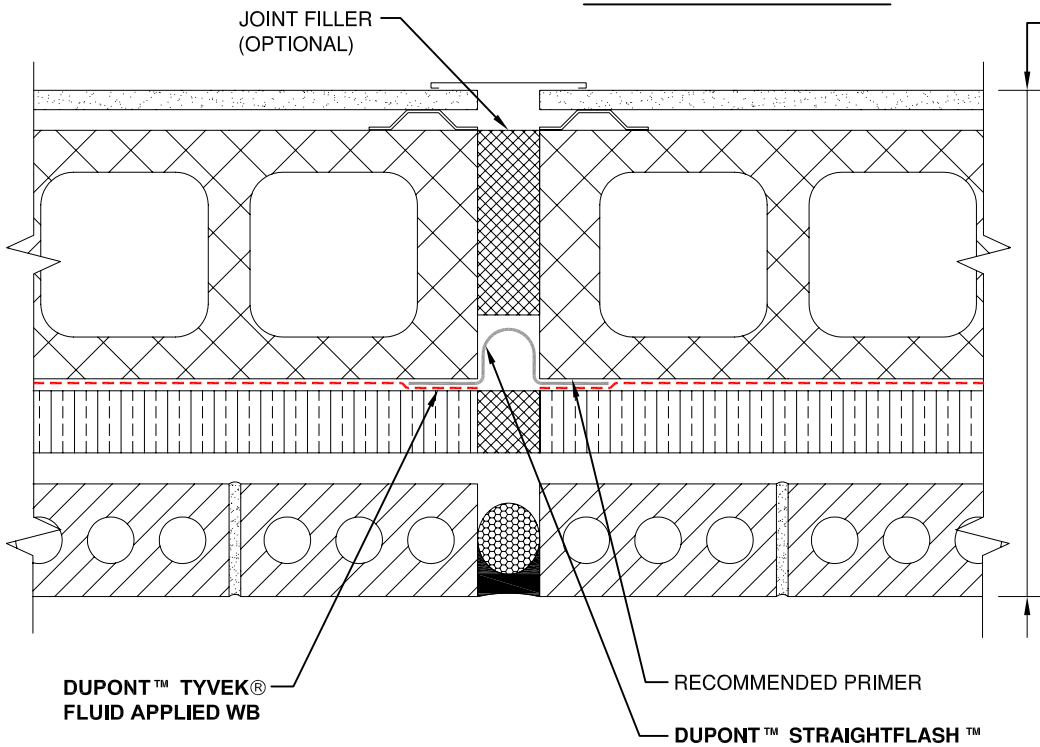


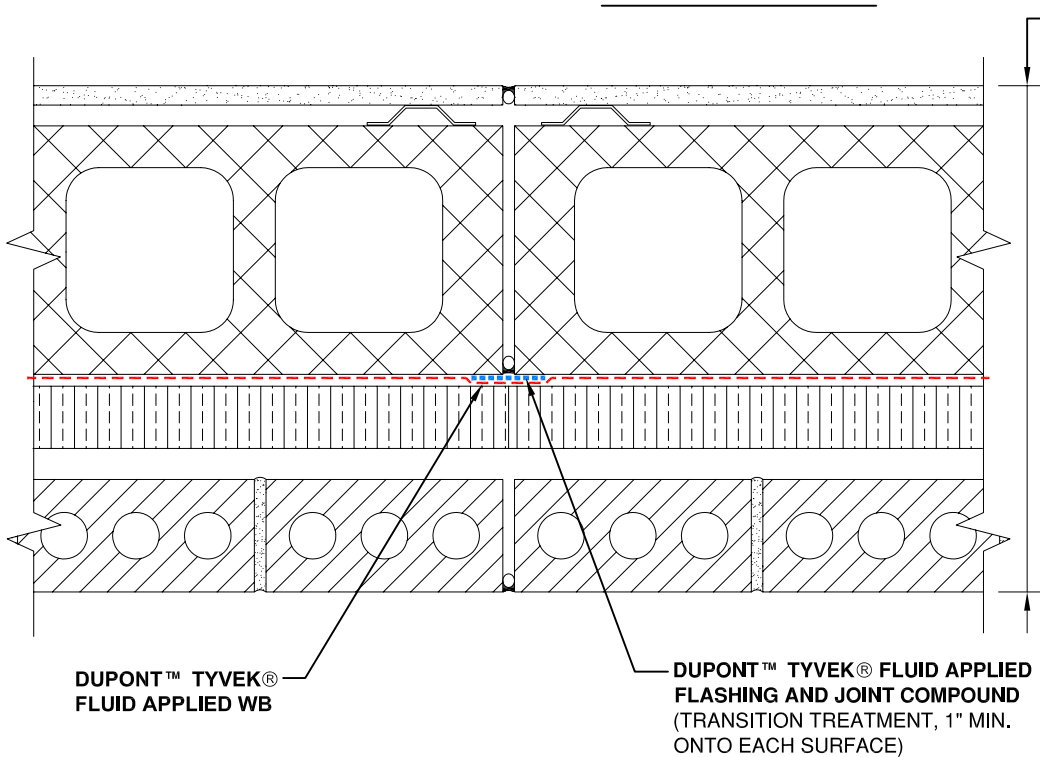
## EXPANSION JOINT



**TYPICAL WALL**  
 INTERIOR GYPSUM BOARD  
 CMU OR CONCRETE WALL  
**DUPONT™ TYVEK® FLUID APPLIED WB**  
 MINERAL FIBER INSULATION (VAPOR PERMEABLE)  
 AIR SPACE  
 BRICK VENEER

**NOTE:**  
 PROVIDE SUFFICIENT SLACK IN MEMBRANE AT EXPANSION JOINT TO ACCOMMODATE MOVEMENT.

## CONTROL JOINT



**TYPICAL WALL**  
 INTERIOR GYPSUM BOARD  
 CMU OR CONCRETE WALL  
**DUPONT™ TYVEK® FLUID APPLIED WB**  
 MINERAL FIBER INSULATION (VAPOR PERMEABLE)  
 AIR SPACE  
 BRICK VENEER

**NOTE**

- 1) INTERIOR VAPOR RETARDER MAY BE REQUIRED IN SOME REGIONS.
- 2) THIS INFORMATION IS PROVIDED BY DUPONT AS REFERENCE ONLY; PLEASE CONSULT LOCAL BUILDING CODES, REGULATIONS AND LAWS TO DETERMINE THE APPROPRIATE CONSTRUCTION METHODS AND MATERIALS NEEDED.

SCALE: NOT TO SCALE

REVISION DATE: 11/17/10

DRAWING: FA-BX-105

**EXPANSION JOINT / CONTROL JOINT - METHOD 1**  
 BRICK VENEER / CMU WALL



**Tyvek.**  
 FLUID APPLIED WB