

MINERAL FIBER INSULATION
(VAPOR PERMEABLE)

DUPONT™ TYVEK®
FLUID APPLIED WB

EXTERIOR GYPSUM BOARD

BRICK VENEER

SEALANT
BY OTHERS

WINDOW FRAME

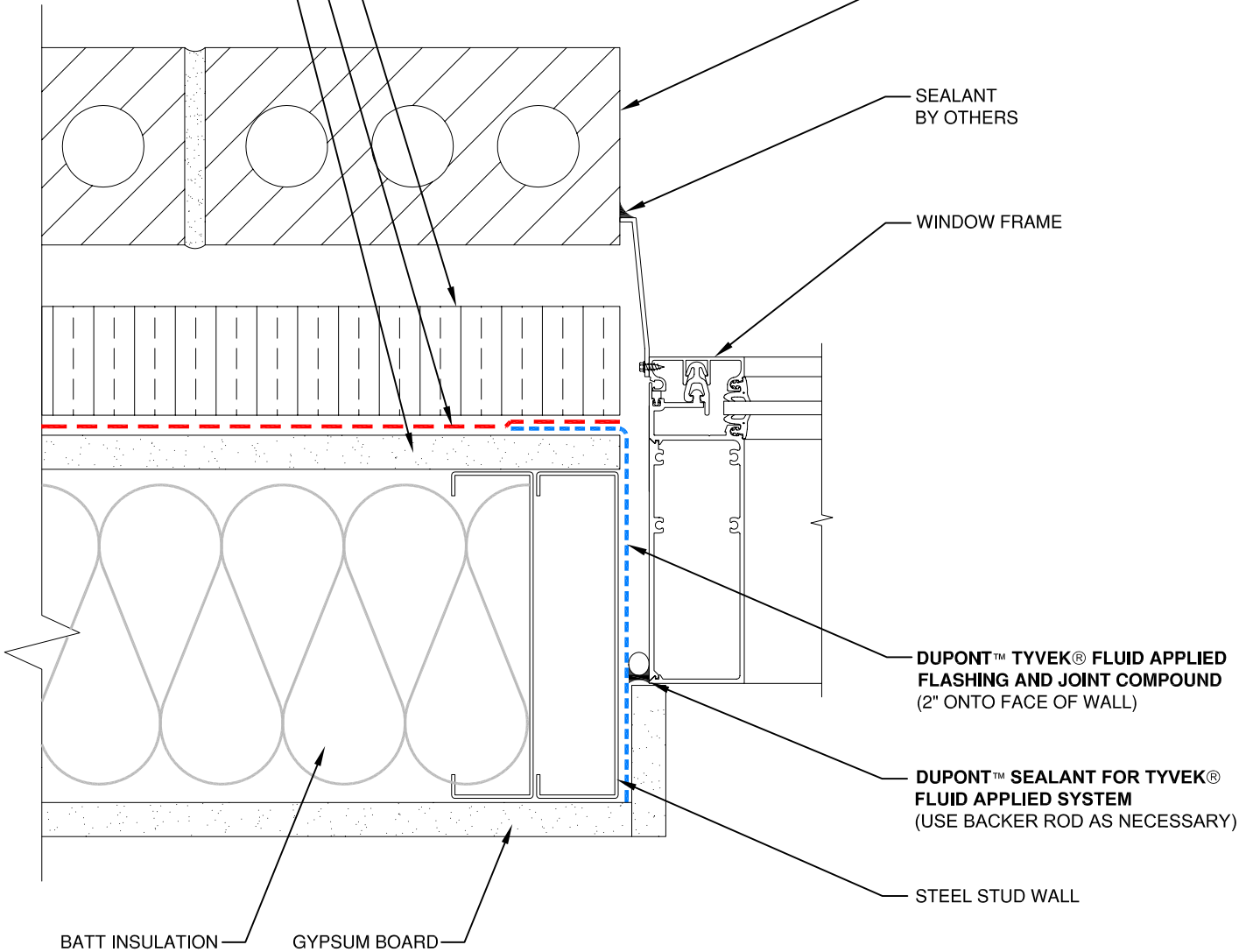
DUPONT™ TYVEK® FLUID APPLIED
FLASHING AND JOINT COMPOUND
(2" ONTO FACE OF WALL)

DUPONT™ SEALANT FOR TYVEK®
FLUID APPLIED SYSTEM
(USE BACKER ROD AS NECESSARY)

STEEL STUD WALL

BATT INSULATION

GYPSUM BOARD



NOTE

- 1) INTERIOR VAPOR RETARDER MAY BE REQUIRED IN SOME REGIONS.
- 2) THIS INFORMATION IS PROVIDED BY DUPONT AS REFERENCE ONLY; PLEASE CONSULT LOCAL BUILDING CODES, REGULATIONS AND LAWS TO DETERMINE THE APPROPRIATE CONSTRUCTION METHODS AND MATERIALS NEEDED.



Tyvek.
FLUID APPLIED WB

SCALE: NOT TO SCALE

REVISION DATE: 4/28/10

DRAWING: FA-BX-W200j

STOREFRONT WINDOW JAMB - METHOD 1

BRICK VENEER / EXTERIOR INSULATION / STEEL STUD WALL / FLUID APPLIED FLASHING