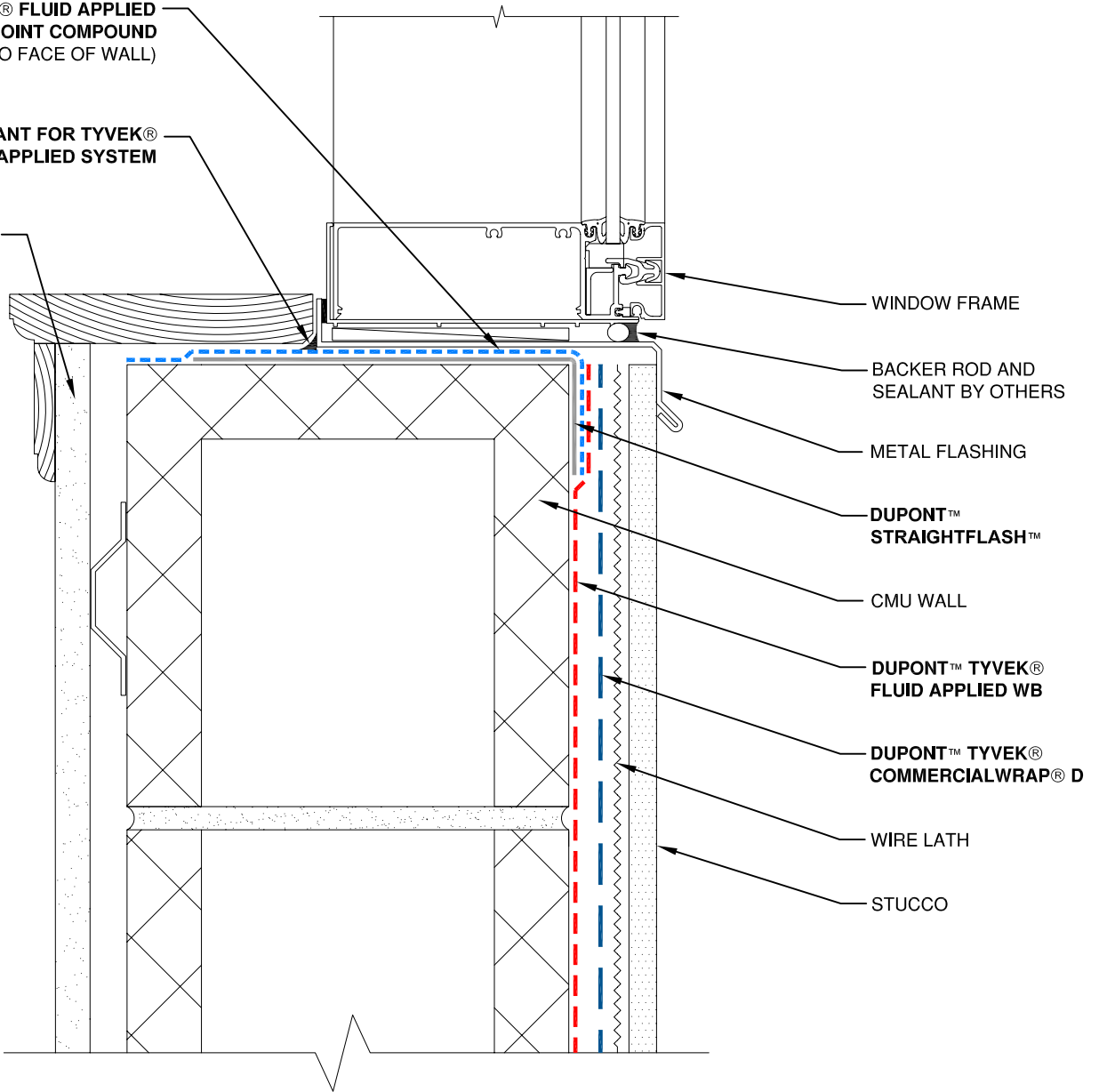


DUPONT™ TYVEK® FLUID APPLIED FLASHING AND JOINT COMPOUND
(2" ONTO FACE OF WALL)

DUPONT™ SEALANT FOR TYVEK®
FLUID APPLIED SYSTEM

GYPSUM BOARD



WINDOW FRAME

BACKER ROD AND
SEALANT BY OTHERS

METAL FLASHING

DUPONT™
STRAIGHTFLASH™

CMU WALL

DUPONT™ TYVEK®
FLUID APPLIED WB

DUPONT™ TYVEK®
COMMERCIALWRAP® D

WIRE LATH

STUCCO

NOTE

- 1) INTERIOR VAPOR RETARDER MAY BE REQUIRED IN SOME REGIONS.
- 2) THIS INFORMATION IS PROVIDED BY DUPONT AS REFERENCE ONLY; PLEASE CONSULT LOCAL BUILDING CODES, REGULATIONS AND LAWS TO DETERMINE THE APPROPRIATE CONSTRUCTION METHODS AND MATERIALS NEEDED.

SCALE: NOT TO SCALE

REVISION DATE: 9/14/10

DRAWING: FA-S-W100s

STOREFRONT WINDOW SILL - METHOD 1

STUCCO / CMU WALL / FLUID APPLIED FLASHING



Tyvek.

FLUID APPLIED WB