

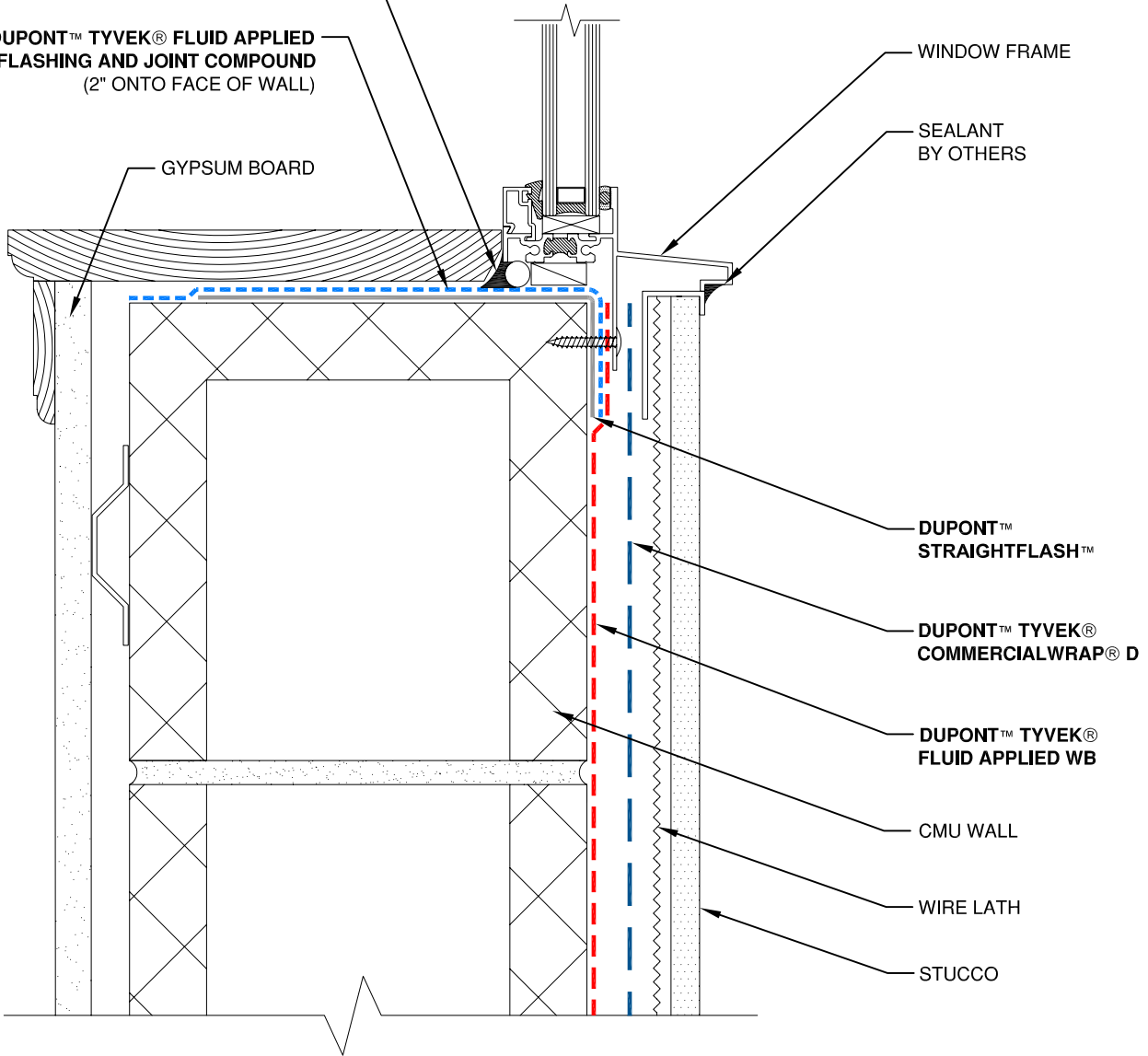
DUPONT™ SEALANT FOR TYVEK®
FLUID APPLIED SYSTEM
(USE BACKER ROD AS NECESSARY)

DUPONT™ TYVEK® FLUID APPLIED
FLASHING AND JOINT COMPOUND
(2" ONTO FACE OF WALL)

GYPSUM BOARD

WINDOW FRAME

SEALANT
BY OTHERS



DUPONT™
STRAIGHTFLASH™

DUPONT™ TYVEK®
COMMERCIALWRAP® D

DUPONT™ TYVEK®
FLUID APPLIED WB

CMU WALL

WIRE LATH

STUCCO

NOTE

- 1) INTERIOR VAPOR RETARDER MAY BE REQUIRED IN SOME REGIONS.
- 2) THIS INFORMATION IS PROVIDED BY DUPONT AS REFERENCE ONLY; PLEASE CONSULT LOCAL BUILDING CODES, REGULATIONS AND LAWS TO DETERMINE THE APPROPRIATE CONSTRUCTION METHODS AND MATERIALS NEEDED.



SCALE: NOT TO SCALE

REVISION DATE: 9/14/10

DRAWING: FA-S-W102s

FLANGED WINDOW SILL - METHOD 1

STUCCO / CMU WALL / FLUID APPLIED FLASHING

Tyvek.
FLUID APPLIED WB