

DUPONT™ SEALANT FOR TYVEK®
 FLUID APPLIED SYSTEM
 (USE BACKER ROD AS NECESSARY)

DUPONT™ FLEXWRAP™ NF or
 DUPONT™ STRAIGHTFLASH™
 (2" ONTO FACE OF WALL)

WINDOW FRAME

SEALANT
 BY OTHERS

GYPSUM BOARD

BATT INSULATION

STEEL STUD WALL

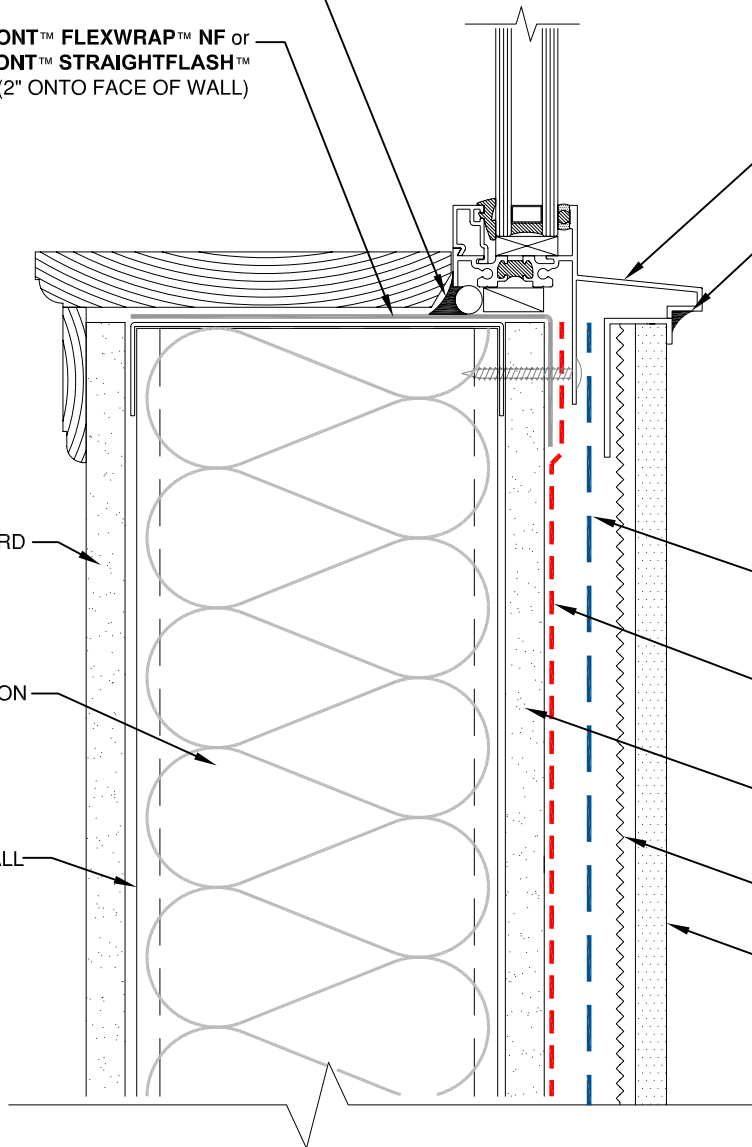
DUPONT™ TYVEK®
 COMMERCIALWRAP® D

DUPONT™ TYVEK®
 FLUID APPLIED WB

EXTERIOR GYPSUM
 BOARD

WIRE LATH

STUCCO



NOTE

- 1) INTERIOR VAPOR RETARDER MAY BE REQUIRED IN SOME REGIONS.
- 2) THIS INFORMATION IS PROVIDED BY DUPONT AS REFERENCE ONLY; PLEASE CONSULT LOCAL BUILDING CODES, REGULATIONS AND LAWS TO DETERMINE THE APPROPRIATE CONSTRUCTION METHODS AND MATERIALS NEEDED.

SCALE: NOT TO SCALE

REVISION DATE: 9/14/10

DRAWING: FA-S-W203s

FLANGED WINDOW SILL - METHOD 2

STUCCO / STEEL STUD WALL / SELF-ADHERED FLASHING



Tyvek.
 FLUID APPLIED WB