



Proven protection for a visibly better crop

DuPont™ Approach® Prima fungicide

DuPont™ Approach® Prima fungicide protects your crop, even under heavy disease pressure, while providing visible foliar health benefits that keep leaves greener for improved grain quality and yield in the fall.

Key benefits of Approach® Prima

- Increased green leaf area keeps the photosynthetic energy producing longer into the season, which contributes to improved seed development, test weight and quality
- Provides more complete coverage because it is rapidly absorbed and moves quickly into and within each plant. This helps compensate for less-than-ideal timing, since weather and other crop demands can make it difficult to perfectly plan fungicide applications.
- Protects your crop from inside and outside the plant, throughout the canopy and in wet weather — the only disease control technology today with these layers of coverage
- Contains two modes of action for better disease control of many hard-to-control diseases, including gray leaf spot, northern corn leaf blight, and common and southern rust

Control of northern corn leaf spot in inbred corn with sequential applications of DuPont™ Approach® and Approach® Prima fungicides*

Treatment rate in product/A**		% Severity northern corn leaf spot	
		July 25: 14 days after first appl.	August 8: 13 days after second appl.
		Leaf below the ear leaf	Ear leaf
1	9 fl oz Approach® at V10 fb 6.8 fl oz Approach® Prima 15 days later	0.4 b	0.9 c
2	14 fl oz Quilt Xcel at V10 fb 14 oz Quilt Xcel 15 days later	0.9 b	0.8 c
999	Untreated check	12.7 a	32.1 a

* South Charleston, OH. Test MWH-13-667.

** V10 application made July 11. VT/R1 application (15 days later) made July 26.

Because picoxystrobin and cyproconazole are highly systemic, both components are more active throughout the plant. This increases the effectiveness for management of resistance relative to premixes with less systemic activity. Both components are highly curative, which also helps with efficacy and resistance management (see below).

FOUR MOVEMENT PROPERTIES quickly surround, penetrate and protect leaves and stems



Translaminar Movement
Moves through the leaf surface to protect top and bottom of the leaf



Xylem Systemic Activity
Moves through plant tissues to distribute throughout the leaf



Local Gas Activity
Gas-like protective barrier moves over the leaf surface



Wax Diffusion Activity
More consistent coverage across leaf and stem surface

PREVENTIVE, CURATIVE AND ERADICANT ACTIVITY

2 MODES OF ACTION

with Approach® Prima effectively control all phases of the pathogen life cycle

germination



growth of germ tube



penetration and parasitism



tissue colonization



sporulation



PICOXYSTROBIN

CYPROCONAZOLE

more activity

less activity



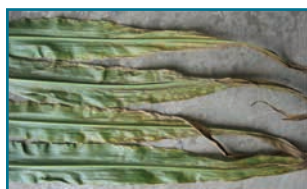
DuPont™ Aproach® Prima

fungicide

DuPont™ Aproach® Prima Fungicide Seed Corn Program Recommendations

Crop	Disease Controlled or Suppressed	Rate (fl oz/A)	Treatment Instructions
Corn: field, seed	Anthracnose leaf blight and stalk rot (<i>Colletotrichum graminicola</i>) Eye spot (<i>Aureobasidium zeae</i> , <i>Kabatiella zeae</i>) Gray leaf spot (<i>Cercospora zeae-maydis</i>) Leaf spots (<i>Alternaria spp.</i>) Northern corn leaf blight (<i>Septosphaeria turcica</i> , <i>Exserohilum turcicum</i>)	3.4	Apply early season for preventive disease control/suppression. Additional treatments should be made depending on disease pressure and environmental conditions.
	Northern corn leaf spot (<i>Cochliobolus carbonum</i>) Physoderma brown spot (<i>Physoderma maydis</i>) Rust, common (<i>Puccinia sorghi</i>) Rust, southern (<i>Puccinia polyspora</i>) Southern corn leaf blight (<i>Cochliobolus heterostrophus</i> , <i>Bipolaris maydis</i>) Yellow leaf blight (<i>Phyllosticta maydis</i>)	3.4 to 6.8	Begin applications prior to disease development. Use higher rate and shorter interval when disease pressure is high.

- Apply no more than two sequential applications of a picoxystrobin-containing product before switching to a fungicide with a different mode of action. The minimum re-treatment interval in corn for DuPont™ Aproach® Prima is 7 days.
- Do not tank mix Aproach® Prima with an adjuvant or crop oil when spraying corn between the V8 and VT stages of growth.
- Minimum time (PHI) between the last application and harvest for grain or ear is 30 days and for silage is 21 days.
- Do not exceed 6.8 fluid ounces per acre per crop.
- When applied alone or in combination with other products containing picoxystrobin, do not apply more than 0.585 pounds of picoxystrobin active ingredient per acre per year to corn.
- When applied alone or in combination with other products containing cyproconazole, do not apply more than 0.036 pounds of active ingredient cyproconazole per acre per year to corn.



Ear leaves from untreated plot, rep 3. Photo taken 13 days after second application.

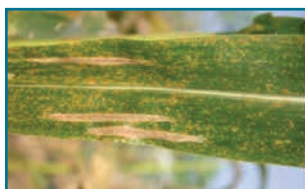


Ear leaves from 9 fl oz Aproach® fb 6.8 fl oz Aproach® Prima plot. Photo taken 13 days after second application.

Control of northern corn leaf blight and common rust



Aproach® Prima at 6.8 fl oz/A at R1, plus DuPont™ Prevathon® insect control, powered by Rynaxypyr®, at 14 fl oz/A.



Untreated.

Trial #: MTE-13-044/US 666/13/01 MTE L1

This reference guide is not intended as a substitute for the product label for the product(s) referenced herein. Product labels for the above product(s) contain important precautions, directions for use, and product warranty and liability limitations, which must be read before using the product(s). Applicators must be in possession of the product label(s) at the time of application. Always read and follow all label directions and precautions for use when using any pesticide alone or in tank-mix combinations.

DuPont™ Aproach® Prima fungicide may not be registered for sale or use in all states. Contact your DuPont representative for details and availability in your state.

Unless indicated, trademarks with ®, ™ or SM are trademarks of DuPont or affiliates. © 2013–2017 DuPont. 6/17

Reorder K-29525 (Replaces K27659)