



Clean, high-quality grain starts early

DuPont™
Finesse®
Cereal & Fallow
herbicide

Early Post/Topdress Application

Perhaps there's nothing more pleasing than watching combines harvest a clean, beautiful wheat crop. But getting to that point isn't always easy. Every year, you battle henbit, mustards, wild buckwheat and other tough broadleaf weeds. Left uncontrolled, these weeds can make a mess of harvest, to say nothing of the lower yields and disappointing dockage.

Fortunately, DuPont™ Finesse® Cereal & Fallow herbicide makes growing wheat a little easier. Applied with a topdress fertilizer treatment, Finesse® Cereal & Fallow gets your fields clean and your wheat off to a lush, healthy start. Then, its superior residual performance keeps working through harvest to deliver a clean crop for faster and easier harvesting.

Here's what you get when using Finesse® Cereal & Fallow at topdress

One-pass weed control

Finesse® Cereal & Fallow is compatible with liquid fertilizers, which makes it easy and economical to achieve the weed control you want. Tank mix it with your liquid fertilizer to save an application trip. If you're splitting your topdress fertilizer application, include Finesse® Cereal & Fallow in the first application for best results.

Contact and residual activity

Finesse® Cereal & Fallow burns down weeds that have emerged at the time of application and provides residual control through harvest. You can get complete control of both winter and summer weeds with one treatment.

Superior broadleaf weed control

University studies show that Finesse® Cereal & Fallow delivers excellent control of henbit, which alone is enough reason to choose the cutting-edge DuPont product. It also provides residual activity to keep spring-germinating weeds like wild buckwheat under control.

Application flexibility

Finesse® Cereal & Fallow can be applied in the fall, winter or spring, so you can choose the timing of your fertilizer application and decide when to treat weed problems, depending on your workload.

What's more, a fall treatment of just 4/10 ounce of Finesse® Cereal & Fallow per acre will control winter weeds like mustards and henbit, and still provide control of wild buckwheat and other weeds, saving you time and the cost of having to treat again in the spring.

Excellent crop safety

Raise a beautiful crop that's fast and easy to harvest, and reduce your worry about injury to your crop. Finesse® Cereal & Fallow helps you maximize yields because of its excellent crop tolerance. And with no grazing restrictions, Finesse® Cereal & Fallow can help you maximize beef profits too.

Easy to use

With its dry-flowable formulation, Finesse® Cereal & Fallow pours smoothly to make adjusting its rate easy. It also dissolves quickly and completely in the spray tank.



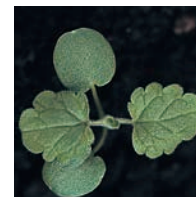
Flixweed



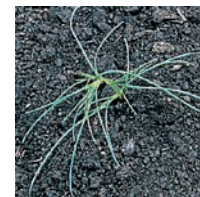
Plains coreopsis



Kochia



Henbit



Russian thistle

DuPont™ Finesse® Cereal & Fallow herbicide

Weeds controlled or suppressed

2/10 to 3/10 ounce per acre

Beakchervil, bur	Filaree, redstem	Mustard: blue, treacle (bushy wallflower), tumble (Jim Hill), wild ¹
Buttercup, bur (testiculate)	Flixweed ^{1,2,3}	Pennycress, field
Carrot, wild	Geranium, Carolina	Pepperweed, Virginia
Catchfly, conical	Groundsel	Pigweed: prostrate, redroot ¹ , smooth ¹
Chamomile: false, mayweed	Hempnettle	Pineapple-weed
Chickweed: common ¹ , jagged, mouseear	Henbit	Purslane
Cockle, white	Ladysthumb	Shepherd's-purse
Cowcockle	Lambsquarters ¹	Spurry, corn
Dock: broadleaf, curly	Lettuce: miner's, prickly ^{1,2}	Tansymustard ^{2,3}
Falseflax, smallseed ¹		

3/10 to 4/10 ounce per acre

Bedstraw ^{2,3}	Geranium, dovefoot	Smartweed, Pennsylvania ²
Bluegrass, annual ^{2,3}	Gromwell, corn ^{2,3}	Sowthistle, annual
Bromus species (cheat, downy brome, Japanese brome) ^{2,3}	Knotweed, prostrate ^{2,3}	Speedwell, (common, ivyleaf) ²
Buckwheat, wild ^{3,4}	Kochia ^{1,2,3}	Sunflower ^{1,3}
Fiddleneck, coast (tarweed)	Poppy, prickly (pinnate)	Thistle: Canada ^{2,3} , Russian ^{1,2,3}
Foxtail, green (pigeongrass) ^{1,2}	Radish, wild ³	Vetch ³
	Ryegrass, annual ^{2,3}	

5/10 ounce per acre (preemergence only)

Bromus species (cheat, downy brome, Japanese brome) ^{1,2,3}	Ryegrass, annual ^{1,2,3}
--	-----------------------------------

¹ Naturally-occurring resistant biotypes of these weeds are known to occur. See the Tank Mixtures, Specific Weed Instructions and Weed Resistance sections of this label for additional details.

² When used as directed, weeds are suppressed and/or controlled. Weed suppression is a visible reduction in weed competition (reduced population and/or vigor) as compared to an untreated area. Degree of suppression will vary with rate used, size of weeds and environmental conditions following treatment.

³ See the Specific Weed Problems section on the DuPont™ Finesse® Cereal & Fallow label for more information regarding control and suppression of these weeds.

⁴ For best results, apply Finesse® Cereal & Fallow preemergence at 4/10 ounce per acre to wild buckwheat in the fall or early spring.

Use recommendations

Here's how it works

DuPont™ Finesse® Cereal & Fallow lets you wait until your normal top-dress time to control broadleaf weeds with one weed-and-feed trip.

Rate: For best results, apply Finesse® Cereal & Fallow at 2/10 to 4/10 ounce per acre.

Timing: Apply preemergence or anytime from the two-leaf stage to boot.

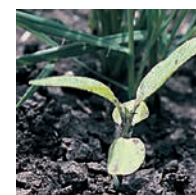
Mixing: When applying Finesse® Cereal & Fallow with liquid fertilizer, it is advisable to slurry Finesse® Cereal & Fallow in water, then thoroughly mix the slurry into the liquid fertilizer. For best results, Finesse® Cereal & Fallow should always be tank-mixed with MCPA, 2,4-D, dicamba or fluroxypyr. Tank mixes containing MCPA or 2,4-D should be applied after weeds have emerged.



Lambsquarters



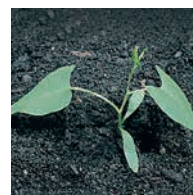
Tansymustard



Sunflower



Blue mustard



Wild buckwheat



Treacle mustard

For more information

Get the full details on how Finesse® Cereal & Fallow herbicide at topdress can have your fields looking great at harvest. Contact your local DuPont retailer or representative. And visit us at finesse.dupont.com.