



Building Solutions



750ml INSTA-STIK
roofing adhesive

INSTA-STIK

**Professional
Roofing
Adhesive**

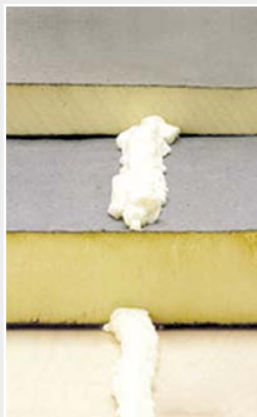
INSTA-STIK roofing adhesive in a can: for highly portable and economical adhesion

The 750ml INSTA-STIK™ roofing adhesive can has been designed to offer quick and economical installation of roof insulation boards on small flat roofing projects.

Each can contains enough adhesive to adhere up to 14m² of insulation board (based on 19-25mm beads at 300mm centres), and comes with optional gun sizes: a standard short barrel foam gun and a 100cm long barrel foam gun.

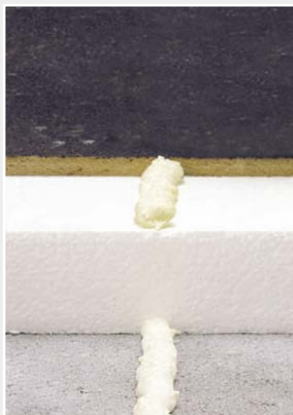
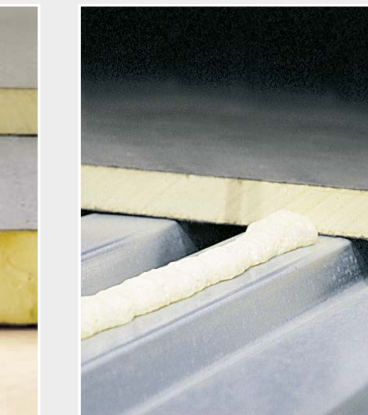
The re-useable guns offer easy, quick yet controlled application and the adhesive is dispensed as foam which 'cures' within 20 to 30 minutes. There's no need to use a primer, and there are no fumes, noise, dust or vibration during use.

INSTA-STIK roofing adhesive can be used for the attachment of insulation boards and fleece-backed single-ply membranes to a variety of substrates on flat roofs. Please refer to the manufacturers of adjacent layers to determine their compatibility, in terms of bonding, with INSTA-STIK roofing adhesive.



Features and benefits of 750ml INSTA-STIK roofing adhesive

- »»» Economical can size with minimal wastage
- »»» Quick and easy to apply with controlled application
- »»» Re-usable applicator guns in two sizes
- »»» Fast curing and strong bond strength
- »»» Short preparation time – no heating required
- »»» No primer needed
- »»» Safety: no hot works, naked flames, noise or vibration in use
- »»» Cleanliness: no fumes or dust in use
- »»» No damage to substrate from mechanical fixings
- »»» No visible fasteners on the underside of the substrate
- »»» Can be used on vertical substrates such as upstands
- »»» No thermal bridging



INSTA-STIK roofing adhesive dispensed from a 750ml can is compatible with the following insulation boards:

- »» Bituminous felt faced boards
- »» Cork insulation boards
- »» Cellular glass insulation boards
- »» Expanded polystyrene boards (EPS)
- »» Extruded polystyrene boards (XPS)
- »» Glass tissue faced boards
- »» Rock fibre boards
- »» Wood fibre boards

INSTA-STIK roofing adhesive dispensed from a 750ml can is compatible with the following vapour barriers and substrates:

- »» Bituminous vapour control layers
- »» Concrete decks
- »» Galvanized metal decks
- »» Mastic asphalt
- »» Oriented strand boards
- »» Plywood
- »» Proprietary vapour barriers and existing bituminous built-up roofing

Note that generally, and especially for galvanized metal decks, surfaces must be free from oil and grease. For information on compatibility of INSTA-STIK roofing adhesive to other building materials and substrates than those listed, please refer to the local Dow office or distributor of INSTA-STIK products. Please refer to the manufacturers of adjacent layers to determine their compatibility, in terms of bonding, with INSTA-STIK roofing adhesive.

INSTA-STIK should not be used to bond bitumen faced boards to bitumen surfaces. Also note that before installation, the suitability of the roof assembly to resist wind loading must be assessed in accordance with national requirements.

Guidance on INSTA-STIK application

Table 1 - GUIDANCE ON INSTA-STIK BEAD SIZE AND SPACING FOR ATTACHMENT OF INSULATION BOARDS

Building height (m)	Parapet height (mm)	Perimeter band width (m)	Spacing (mm) at perimeter	Spacing (mm) central roof area
0 - 6.0	0 - 600	1.0	150	300
	600+	0	300	300
6.0 - 12.5	0 - 600	2.0	150	300
	600 -1200	1.0	150	300
	1200+	0	300	300
12.5 - 21.5	0 - 600	3.0	150	300
	600 -1200	2.0	150	300
	1200+	1.0	150	300
21.5 - 30.5	0 - 600	4.0	150	300
	600 -1200	3.0	150	300
	1200+	3.0	150	300

Coverage is up to 14m² of insulation per can of INSTA-STIK for 19-25mm wide beads at 300mm spacing. The above centres are based on an adhesive bond strength of 1.5kN/m bead length (19-25mm width) between substrate and insulation. Because of greater wind pressures exerted in perimeter areas, it is recommended that fixing should be increased in such zones.

Table 2 - GUIDANCE ON INSTA-STIK BEAD SIZE AND SPACING FOR ATTACHMENT OF FLEECE-BACKED MEMBRANES

Building height (m)	Parapet height (mm)	Perimeter band width (m)	Perimeter bead band	Spacing (mm) central roof area
0 - 6.0	0 - 600	1.0	150	200
	600+	0	200	200
6.0 - 12.5	0 - 600	2.0	150	200
	600 -1200	1.0	150	200
	1200+	0	200	200
12.5 - 21.5	0 - 600	3.0	150	200
	600 -1200	2.0	150	200
	1200+	1.0	150	200
21.5 - 30.5	0 - 600	4.0	150	200
	600 -1200	3.0	150	200
	1200+	3.0	150	200

Coverage is up to 8m² of membrane per can of INSTA-STIK, with 19-25mm beads at 200mm spacing. The table is based on tests done with fleece-backed membranes in Europe on INSTA-STIK adhesive dispensed from a tank.

How to use 750ml INSTA-STIK roofing adhesive

Before applying INSTA-STIK roofing adhesive:

- »» Surfaces should be firm, clean, and free of dust, grease or loose particles.
- »» **Wear suitable protective eyewear and gloves.**
- »» To speed up the curing process, the adhesive beads can be lightly misted with water.

Please note: Moisture is needed for an even and rapid curing of the adhesive.

- 1 Shake the can vigorously for 30 seconds.
- 2 Screw the threaded end of the gun onto the valve.
- 3 During dispensing the can must be held inverted with the valve in bottom position. To extrude the foam, pressure has to be carefully applied to the gun trigger.
The gun trigger can be adjusted by turning the round knob at the rear of the gun dispenser.
- 4 Test by spraying into a container prior to use.
- 5 Dispense INSTA-STIK roofing adhesive onto the substrate.
For bead size and spacing refer to tables 1 and 2.

NOTE: INSTA-STIK roofing adhesive can also be applied on to the insulation board. Where possible beads should run across the width of the insulation boards rather than the length.

- 6 Apply the insulation board to the substrate within seven minutes of spraying the beads (depending on outside conditions) and press firmly. When applying INSTA-STIK, the insulation boards must be placed end-to-end with staggered joints in alternating rows.
- 7 Walk on the boards immediately to spread the beads for maximum contact. Continue to walk on the insulation boards at intervals for about 10 minutes or until bonded.
NOTE: Humidity directly affects curing time. Under low humidity conditions, INSTA-STIK adhesive will take longer to cure.

How to use 750ml INSTA-STIK roofing adhesive

- 8** Fresh foam spills must be removed immediately within the Tack-Free time using INSTA-STIK POLYURETHANE GUN CLEANER, or similar cleaning solution.
Once foam is cured, it may be removed mechanically.
- 9** If working on small areas with intervals, during the intervals leave the gun dispenser on the INSTA-STIK can and turn the screw on the back of the gun clockwise until it stops. Reverse when re-starting adhesion process.
- 10** When a can becomes empty, immediately screw the gun onto another can, cleaning it with gun cleaner if necessary. Following significant stoppages, e.g. a week or more, it is advisable to remove and replace the INSTA-STIK adhesive can with INSTA-STIK POLYURETHANE GUN CLEANER or similar available solution. Squirt through until clear then tighten back screw whilst leaving the gun cleaner on the gun.

Further recommendations

- >>>** Always store and transport cans in an upright position and in dry conditions. Storage temperature: 15°C – 25°C.
- >>>** Cans should not be stored in hot areas, such as vehicles in direct sunlight.
- >>>** Shelf life: 18 months.
- >>>** Once a can has been started, it should be used within four weeks.
- >>>** If aerosol can has become bonded to gun, do not use force to loosen it, as there is danger of uncontrolled product release.
- >>>** If product does not flow easily, do not force product out of can.

Note:

The information and data contained in this brochure do not represent exact sales specifications. The features of the products mentioned may vary. The information contained in this document has been provided in good faith, however Dow excludes as far as possible any liability relating to it and does not give any guarantee or assurance of product performance. It is the purchaser's responsibility to determine whether these Dow products are suitable for the application desired and to ensure that the site of work and method of application conform with current legislation. No licence is hereby granted for the use of patents or other industrial or intellectual property rights. If Dow products are purchased, we advise following the most up-to-date suggestions and recommendations.

Distributor



Building Solutions

Dow Chemical Company Limited
Dow Building Solutions

Diamond House, Lotus Park
Kingsbury Crescent, Staines,
TW18 3AG

Tel.: 020 3139 4000

Fax: 020 3139 4013

Internet: www.styrofoam.co.uk