



Automotive Systems



## Replacement Windscreen Cleaners and Contamination Removers

### BETACLEAN™ 3300 Glass Cleaner

- Non-smearing cleaner used to clean glass, ceramic frit, encapsulations (PUR-RIM, PVC) and polyurethane pre-applied adhesive systems (PAAS) prior to priming
- Removes dust, dirt and many common contaminants

### BETACLEAN™ Easy-Go Cleaning Sponge

- Ultra-abrasive scrubbing tool used in tandem with BETACLEAN™ 3300 to prepare bonding surface for priming by removing common contaminants

### BETABRADE™ F1 Surface Contamination Remover

- Not all contamination is visible, helps eliminate the guesswork
- Removes heavy surface contamination on glass, such as silicone, oils and wax



Let our experience work for you. [www.dowautomotive.com](http://www.dowautomotive.com)

## BETACLEAN™ 3300 Glass Cleaner

- Promotes dirt, road film and grease cleanup
- Evaporates quickly to save time and ensure a dry, residue-free bonding surface
- Can be used to inspect glass quality before installation – highlights fingerprints and glass imperfections
- Available in three convenient packages: handy 8 ml wet-dry wipes, 500 ml spray bottle and environmentally friendly 5 L bottle and 25 L container for refilling spray bottles



## Easy-Go Cleaning Sponge

- Ultra-abrasive melamine sponge used in tandem with BETACLEAN™ 3300 spray cleaner to scrub bonding area
- Helps break through and remove common contaminants
- One-time use only
- Available in bulk – 224 sponges per box. Also part of kits, 12 sponges per kit that includes BETACLEAN™ 3300, BETAPRIME™ 5504G primer sticks and adhesive.



## BETABRADE™ F1

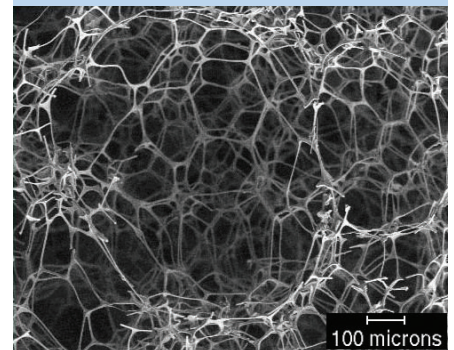
### Surface Contamination Remover

- Removes heavy contamination on glass
- Simple, easy, time-saving application
- Visible – so you can make sure you've applied it thoroughly
- Safe for the installer – no spraying or atomization
- Will not damage or blemish the glass



## How does the BETACLEAN™ Easy-Go Cleaning Sponge work?

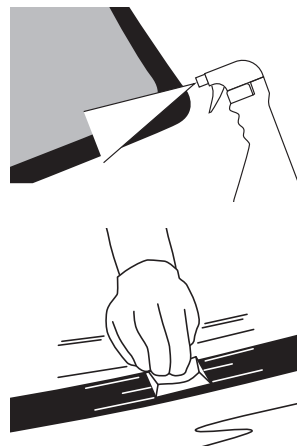
The BETACLEAN™ Easy-Go Cleaning Sponge is made from melamine resin. Melamine sponges have a three dimensional network structure made up of slender and shaped filaments. This network allows the sponge to remain soft, but the filaments are as hard as glass, enabling the sponge to act like a fine sandpaper to remove dirt particles from the glass or ceramic frit without damaging or scratching the surface.



## Glass Preparation

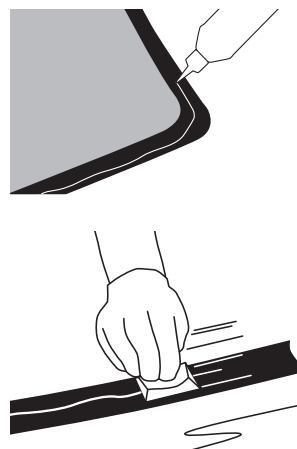
**Preparation process for most glass replacement using BETACLEAN™ 3300 and BETACLEAN™ Easy-Go Cleaning Sponge to remove common contaminants:**

1. Spray glass bonding surface and vision area with BETACLEAN™ 3300.
2. Inspect replacement glass for defects, damage or signs of contamination.
3. Scrub entire bonding area with BETACLEAN™ Easy-Go cleaning sponges.
4. Spray entire windshield with BETACLEAN™ 3300 and wipe clean with a lint-free paper towel.



**Preparation process for most glass replacement using BETABRADE™ F1 and BETACLEAN™ 3300 to remove heavy contaminants such as silicone, oils and wax:**

1. Spray glass bonding surface and vision area with BETACLEAN™ 3300.
2. Inspect replacement glass for defects, damage or signs of contamination.
3. Shake BETABRADE™ F1 bottle for 10 seconds.
4. Apply 2 mm thin line of BETABRADE™ F1 around entire glass bonding area.
5. Scrub the bonding area with a flat lint-free paper towel or Easy-Go Sponge until BETABRADE™ F1 is dry.
6. Spray entire windshield with BETACLEAN™ 3300 and wipe clean with a lint-free paper towel to ensure it is clean and free of any traces of BETABRADE™ F1 in the bondline.



## Easy-to-use: Clean, Prime, Bond

### Clean

Bonding surfaces must be clean of dirt, dust, water, oil, silicone and grease prior to priming and adhesive application. Use BETACLEAN™ 3300 to inspect and clean glass before installation, use BETACLEAN™ Easy-Go Sponge to remove common contamination or apply BETABRADE™ F1 to remove heavy contamination from glass.

### Prime

BETAPRIME™ 5504G is an all-in-one primer suitable for all surfaces: cut-back PU bead, aperture, glass and ceramic frit.

### Bond

BETASEAL™ adhesives are easy to gun in most weather conditions and do not require heating.



## Cleaning and Contamination Removal Application Chart

	Removes Dust and Dirt	Removes Common Contamination	Removes Heavy and Invisible Contamination
BETABRADE™ F1		X	X
BETACLEAN™ 3300	X	X**	
Easy-Go Cleaning Sponge		X*	
*Must be used with BETACLEAN™ 3300			
** Use with BETACLEAN™ Easy-Go Cleaning Sponge			



[www.dowautomotive.com](http://www.dowautomotive.com)

Automotive Systems

In Europe: 00800 3 694 6367 (toll free)\*

In Finland: 990 3 694 6367

In Italy: 800 738 825

In Latin America: Phone: 55-11-5188-9222, Fax: 55-11-5188-9749

In Asia Pacific: Phone: 60 3 7958 3392, Fax: 60 3 7958 5598

All Pacific countries except Indonesia & Vietnam: Toll-free Phone: 800 7776 7776, Toll-free Fax: 800 7779 7779

\*Toll free from Austria, Belgium, Denmark, France, Germany, Hungary, Ireland, The Netherlands, Norway, Portugal, Spain, Sweden, Switzerland and The United Kingdom.

®™ Trademark of The Dow Chemical Company ("Dow") or an affiliated company of Dow.

Form Number 299-52270-05/14-OIA