

GENERAL NOTES

*SEAL ALL TYVEK® JOINTS OR PENETRATIONS WITH APPROVED TAPE.

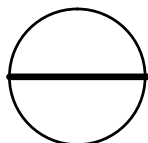
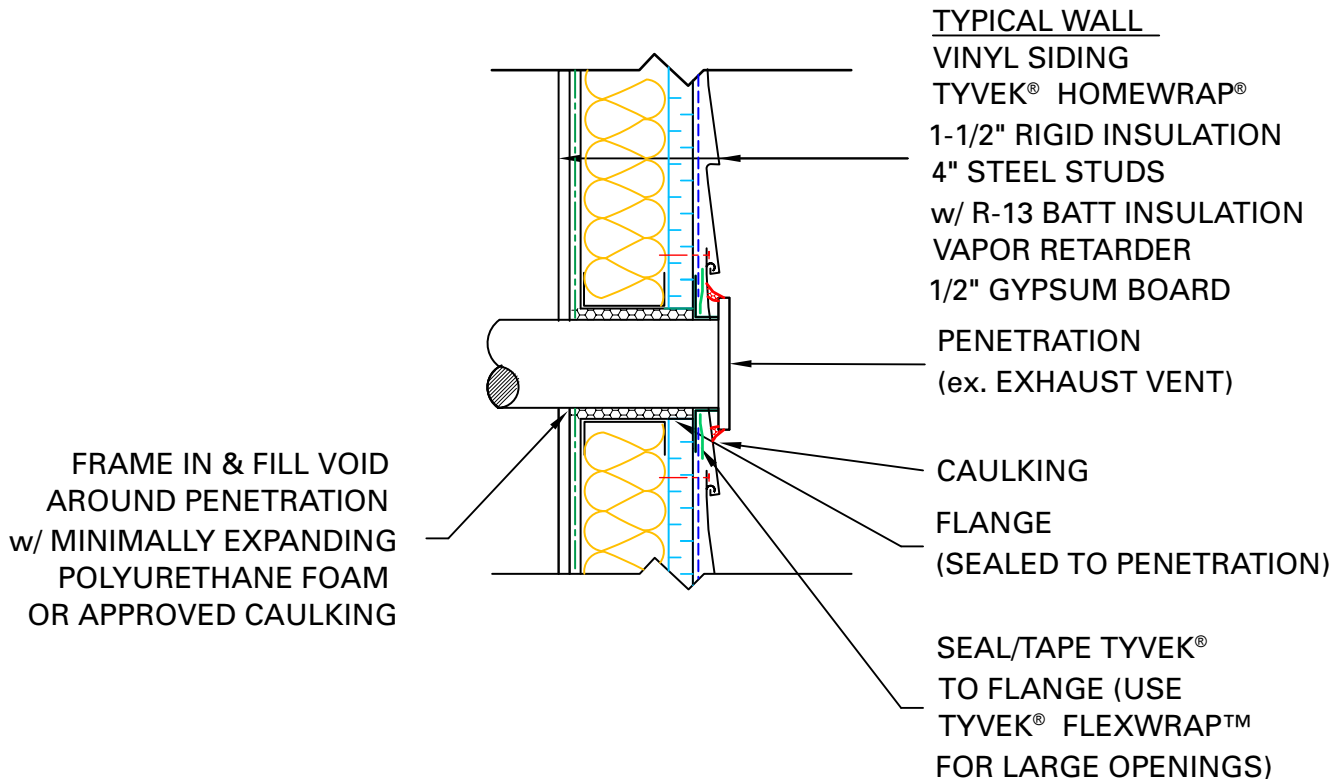
(ex. DUPONT™ CONTRACTOR TAPE)

*FASTEN TYVEK® AND RIGID INSULATION TO STEEL STUDS

USING SCREWS W/ WASHERS (EX. DUPONT™ WRAPCAPS).

*LOCAL LAWS, ZONING, AND BUILDING CODES VARY AND

THEREFORE GOVERNS OVER MATERIAL SELECTION AND DETAILING SHOWN BELOW.



WALL PENETRATION DETAIL

RESIDENTIAL STEEL FRAME STRUCTURE w/ VINYL SIDING

(HEATING CLIMATE)