

## GENERAL NOTES

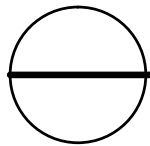
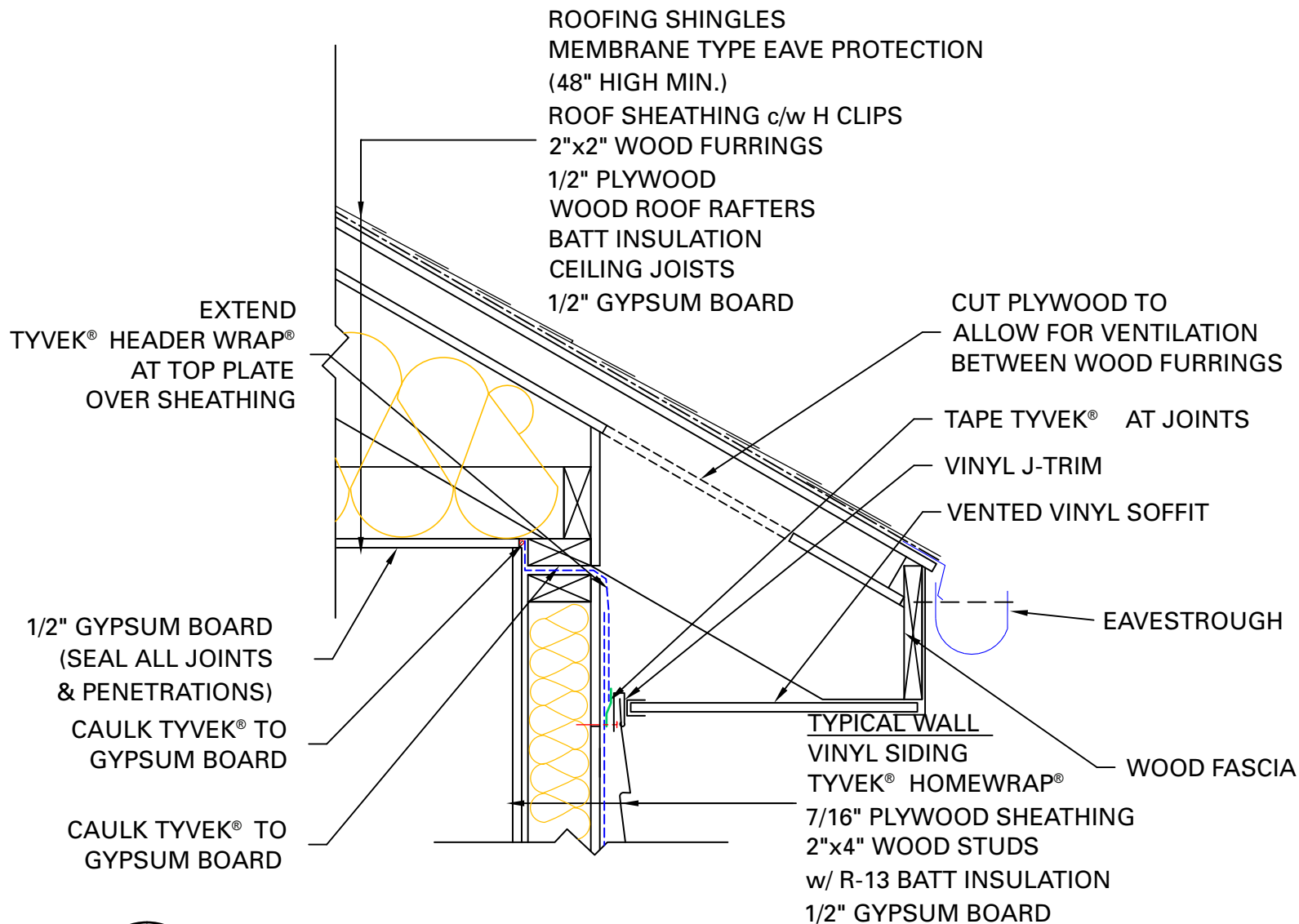
\*SEAL ALL TYVEK® JOINTS OR PENETRATIONS WITH APPROVED TAPE.

(ex. DUPONT™ CONTRACTOR TAPE).

\*FASTEN TYVEK® TO SHEATHING WITH LARGE HEAD NAILS

OR USE NAILS WITH LARGE PLASTIC WASHER HEADS. (ex. DUPONT™ WRAPCAPS)

\*LOCAL LAWS, ZONING, AND BUILDING CODES VARY AND THEREFORE GOVERNS OVER MATERIAL SELECTION AND DETAILING SHOWN BELOW.



# ROOF/ WALL INTERFACE DETAIL

RESIDENTIAL WOOD FRAME STRUCTURE w/ VINYL SIDING (COOLING  
CLIMATE)