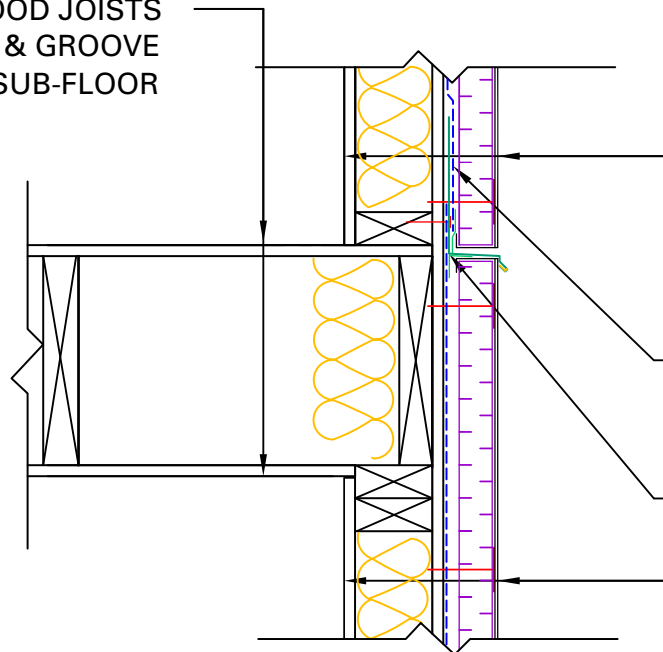


## GENERAL NOTES

- \*SEAL ALL TYVEK® JOINTS AND PENETRATIONS WITH APPROVED TAPE. (ex. DUPONT™ CONTRACTOR TAPE)
- \*FASTEN TYVEK® TO SHEATHING WITH LARGE HEAD NAILS OR USE NAILS WITH LARGE PLASTIC WASHER HEADS. (ex. DUPONT™ WRAPCAPS)
- \*LOCAL LAWS, ZONING, AND BUILDING CODES VARY AND THEREFORE GOVERNS OVER MATERIAL SELECTION AND DETAILING SHOWN BELOW.
- \*INSTALL EIFS ACCORDING TO MANUFACTURER'S WRITTEN INSTRUCTIONS

FLOOR  
1/2" GYPSUM BOARD  
WOOD JOISTS  
5/8" TONGUE & GROOVE  
PLYWOOD SUB-FLOOR

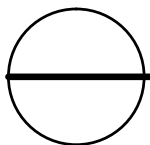


TYPICAL WALL  
FINISH COAT  
BASE COAT w/  
EMBEDDED REINFORCING MESH  
1-1/2" RIGID INSULATION  
TYVEK® STUCCOWRAP®  
7/16" OSB SHEATHING  
2"x4" WOOD STUDS  
w/ R-13 BATT INSULATION  
1/2" GYPSUM BOARD

LAP 6" & TAPE/ CAULK TYVEK®  
(UPPER SHEET) OVER  
THROUGH-WALL FLASHING

TAPE & SECURE TYVEK®  
(LOWER SHEET) BEHIND  
THROUGH-WALL FLASHING

TYPICAL WALL



## FLOOR/ WALL INTERFACE DETAIL

RESIDENTIAL WOOD FRAME STRUCTURE w/ EIFS CLADDING  
(COOLING CLIMATE)