

GENERAL NOTES

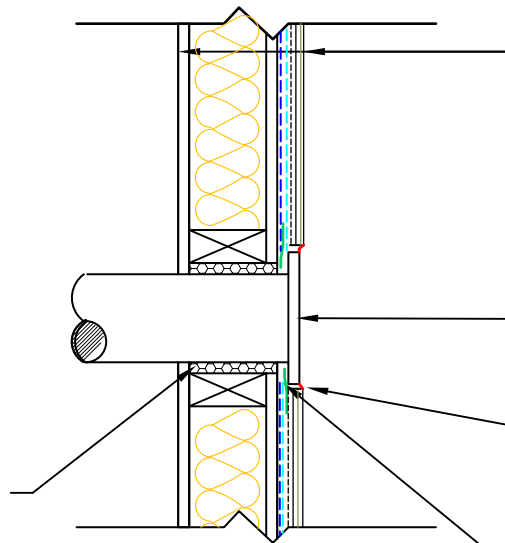
- *SEAL ALL TYVEK® JOINTS AND PENETRATIONS WITH APPROVED TAPE. (ex. DUPONT™ CONTRACTOR TAPE)
- *FASTEN TYVEK® TO SHEATHING WITH LARGE HEAD NAILS OR USE NAILS WITH LARGE PLASTIC WASHER HEADS. (ex. DUPONT™ WRAPCAPS)
- *LOCAL LAWS, ZONING, AND BUILDING CODES VARY AND THEREFORE GOVERNS OVER MATERIAL SELECTION AND DETAILING SHOWN BELOW.
- *INSTALL STUCCO ACCORDING TO MANUFACTURER'S WRITTEN INSTRUCTIONS

TYPICAL WALL
FINISH COAT
BROWN COAT
SCRATCH COAT
WIRE LATH
WEATHER RESISTANT BARRIER
(TYVEK® HOMEWRAP® RECOMMENDED)
TYVEK® STUCCOWRAP®
PLYWOOD SHEATHING
2"x4" WOOD STUDS
w/ R-13 BATT INSULATION
1/2" GYPSUM BOARD

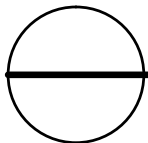
PENETRATION
(ex. EXHAUST VENT)

CAULKING

TAPE TYVEK® AROUND
PENETRATION (USE TYVEK® FLEXWRAP™
FOR LARGE OPENINGS)



PROVIDE WOOD BLOCKING
AND SEAL AROUND
PENETRATION USING
MINIMALLY EXPANDING
POLYURETHANE FOAM OR
APPROVED CAULK



WALL PENETRATION DETAIL

RESIDENTIAL WOOD FRAME STRUCTURE w/ STUCCO (COOLING
CLIMATE)