

DUPONT™ SEALANT FOR TYVEK®
FLUID APPLIED SYSTEM
(USE BACKER ROD AS NECESSARY)

DUPONT™ TYVEK® FLUID APPLIED
FLASHING AND JOINT COMPOUND
(2" ONTO FACE OF WALL)

DUPONT™ STRAIGHTFLASH™

GYPSUM BOARD

WINDOW FRAME

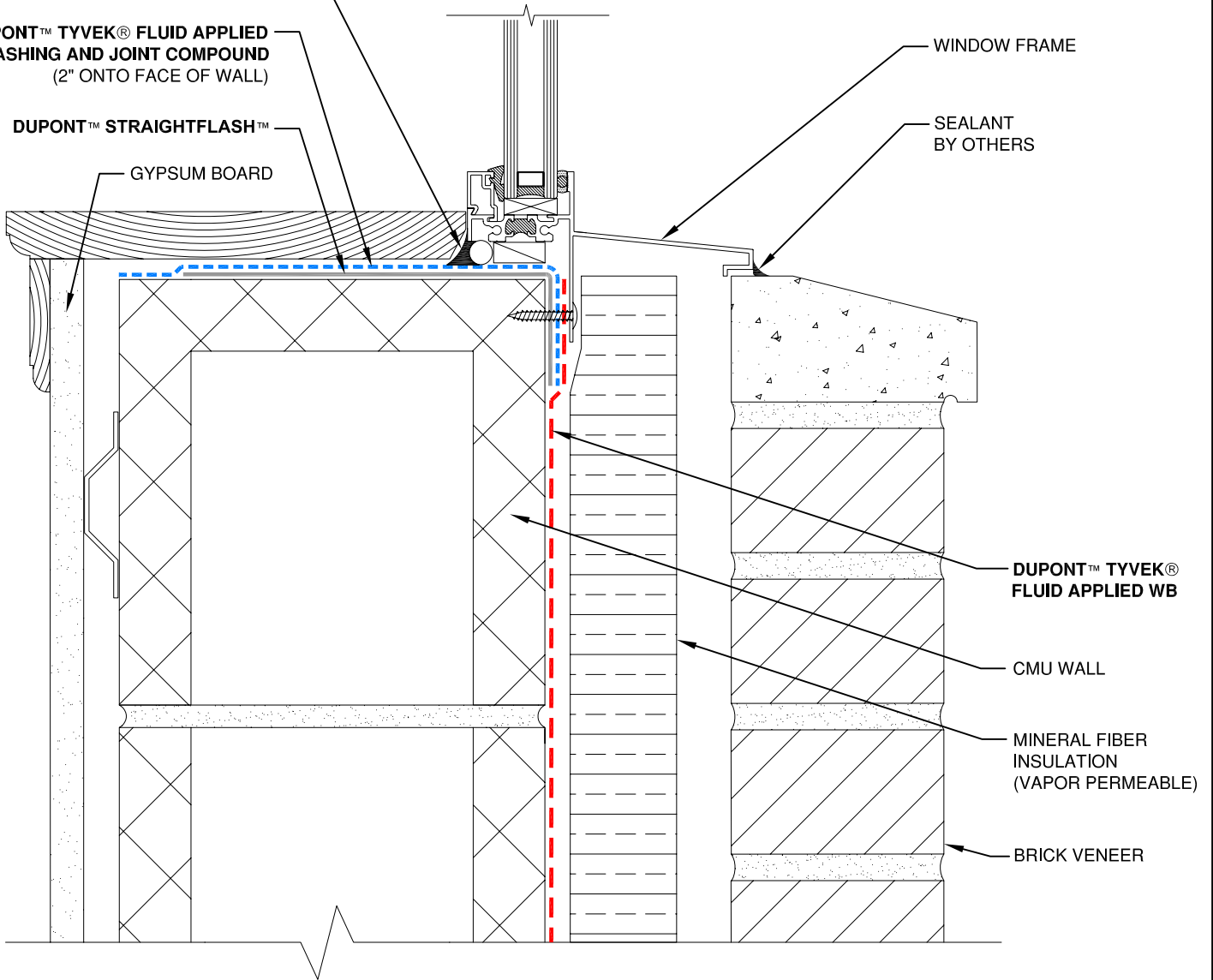
SEALANT
BY OTHERS

DUPONT™ TYVEK®
FLUID APPLIED WB

CMU WALL

MINERAL FIBER
INSULATION
(VAPOR PERMEABLE)

BRICK VENEER



NOTE

- 1) INTERIOR VAPOR RETARDER MAY BE REQUIRED IN SOME REGIONS.
- 2) THIS INFORMATION IS PROVIDED BY DUPONT AS REFERENCE ONLY; PLEASE CONSULT LOCAL BUILDING CODES, REGULATIONS AND LAWS TO DETERMINE THE APPROPRIATE CONSTRUCTION METHODS AND MATERIALS NEEDED.



Tyvek.
FLUID APPLIED WB

SCALE: NOT TO SCALE

REVISION DATE: 4/28/10

DRAWING: FA-BX-W102s

FLANGED WINDOW SILL - METHOD 1
BRICK VENEER / EXTERIOR INSULATION / CMU WALL / FLUID APPLIED FLASHING