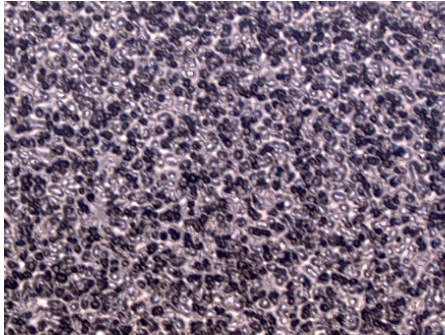


DuPont™ Cyrel® Performance Plate

DSP Engineered Surface Digital Plate



Cyrel® Performance Plate engineered surface (@ 200 magnification)

[DuPont Packaging Graphics](#) continues to be a global technology leader in the development and supply of flexographic printing systems. Our R&D team continues to develop innovative new solutions to help our customers expand their business by taking advantage of new and profitable opportunities in the growing flexographic packaging market. The DuPont Packaging Graphics portfolio of products includes DuPont™ Cyrel® brand photopolymer plates ([analog](#) and [digital](#)), Cyrel® platemaking equipment, [Cyrel® round sleeves](#), [Cyrel® plate mounting systems](#) and the revolutionary [Cyrel® FAST thermal system](#).

DuPont™ Cyrel® Systems: Higher quality at high speed.

DuPont™ Cyrel® Performance Plate DSP is the digital plate of choice for those segments requiring superior solid ink density and long tonal range across a broad range of packaging segments. DSP has been designed to perform with a wide array of substrates and inks.

DuPont™ Cyrel® Performance Plate

Applications

- Flexible packaging
- Tag & Label
- Envelopes
- Carrier bags
- Folding cartons
- Pre-print liner
- Beverage cartons

- Sharp type and open reverses
- Low dot gain
- High resistance to ozone and white light results in excellent storage capability

Printing Ink and Solvent Compatibility

Cyrel® Performance Plates offer excellent compatibility with solvent-based, water-based inks and UV inks.

Product Features

- Exceptional ink transfer provides smooth, high density solids while maintaining the highest quality highlights. Results in outstanding contrast and dynamic range.
- Long tonal range and high ink density means Cyrel® DSP is a true combination plate, suitable for a variety of segments
- Rugged and clean printing for long, uninterrupted print runs
- Less make ready time on press, comes up to color quickly

Process of Use

Expose the plate through the back to establish the floor and maximize sensitivity. Back exposure varies according to relief required. Remove the protective coversheet, and image the plate with the Cyrel® Digital Imager (CDI). Expose the front of the plate surface. Process the plate in the Cyrel® solvent processor to remove unexposed polymer. Finish the plate in a light finisher to eliminate surface tackiness.



Play Video



Download latest version

DuPont™ Cyrel® Performance Plate

DSP Engineered Surface Digital Plate

Mounting

DuPont™ Cyrel® Microflex mounting devices are recommended for mounting Cyrel® Performance Plates. The double sided adhesive should first be applied to the cylinder or sleeve – not the plate – to ensure easier and precise laydown. The polyester base will maintain accurate register even with large plates.

Handling – Raw Material

Store unexposed plates in a cool area (40–90°F, 4–32°C), away from direct sources of heat. Humidity control is not required. Cyrel® DSP is foam interleaved to provide maximum protection of the plate after manufacture and during transportation and storage. Plates should be stacked flat. Plates should not be exposed to direct sunlight or excessive white light. Continuous exposure to very high ozone concentrations should be

avoided. Like all photopolymer plates, Cyrel® Performance Plates should be handled under UV free light; e.g., fluorescent tubes covered with amber sleeves.

Storage – Finished Plates

After printing, plates should be thoroughly cleaned with a compatible solvent before storing. They may be stored on cylinders, sleeves or demounted and stored flat.

Technical Data		
Dependant on Processing Conditions	Cyrel® DSP 45 Thickness 1.14 mm / 0.045 inch	Cyrel® DSP 67 Thickness 1.70 mm / 0.067 inch
Durometer	78–80	70–72
Image Reproduction	1–98% 150 lpi 60 l/cm	1–98% 150 lpi 60 l/cm
Minimum Positive Line Width	0.05 mm (2 mil)	0.05 mm (2 mil)
Minimum Isolated Dot	150 micron (6 mil, 0.15 mm)	150 micron (6 mil, 0.15 mm)
Relief Depth	0.018–0.022 inch / 0.45–0.55 mm	0.018–0.022 inch / 0.45–0.55 mm

For more information on DuPont™ Cyrel® or other DuPont Packaging Graphics products, please contact your local representative: www.cyrel.dupont/na

United States

DuPont Packaging Graphics
Chestnut Run Plaza, Bldg. 702
974 Centre Road
Wilmington, DE 19805
800-345-9999

Canada

DuPont Packaging Graphics
1919 Minnesota Court
Mississauga, ON L5N 0C9
Canada
905-816-3238