

NEW



G-EZKit instructions for BETASEAL™ ACE, BETASEAL™ Xpress30, and BETASEAL™ Express APG urethane adhesives*

Step 1 Apply BETACLEAN™ GC-800 glass cleaner and use Easy-Go melamine foam sponge to wet scrub glass/frit surface.

Step 2 **BETASEAL™ ACE and BETASEAL™ Express APG are primerless-to-glass formulations. For fritted glass (interior or exterior) skip this step.**

If using Xpress30 apply two layers of BETAPRIME™ Clear Advanced SA glass primer to glass/frit and allow to dry for 2 minutes down to 0°F (-18°C).

Step 3 **For priming any areas of bare metal (large or small, including scratches):**

- 3a. Apply one coat of BETAPRIME™ 5504G All-in-One Primer with a clean wool dauber to any areas of bare metal.
- 3b. Allow primer to dry for 2 minutes at 20°F (-7°C) and above. From 20°F (-7°C) down to 0°F (-18°C), allow primer to dry for 6 minutes.
- 3c. Apply a second coat of BETAPRIME™ 5504G and allow primer to dry for 2 minutes at 20°F (-7°C) and above. From 20°F (-7°C) down to 0°F (-18°C), allow primer to dry for 6 minutes.

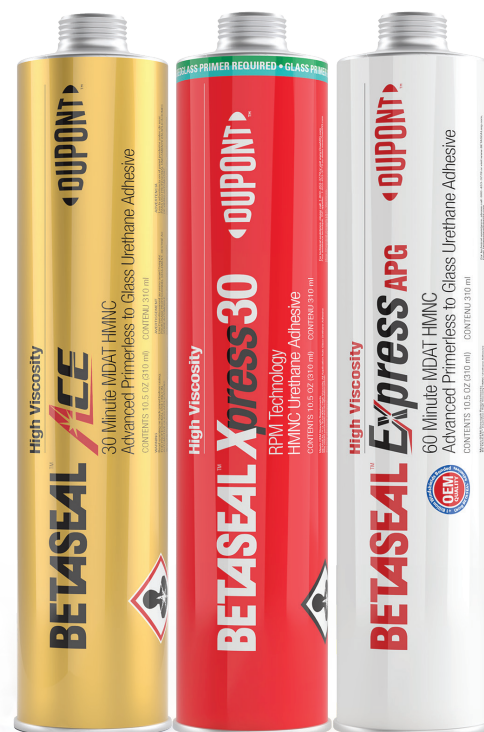
For priming painted bonding surfaces:

- 3a. Apply one coat of BETAPRIME™ 5504G All-in-One Primer with a clean wool dauber to the painted area where original adhesive or paint may have peeled off or to extend the bonding area when applying adhesive to the glass part.
- 3b. Allow primer to dry for 2 minutes at 20°F (-7°C) and above. From 20°F (-7°C) down to 0°F (-18°C), allow primer to dry for 6 minutes.

NOTE: If using BETASEAL™ ACE, no primer on OEM paint systems is needed.

Step 4 Apply adhesive to body or glass and set glass.

*Complete instructions on back.



Windshield installation instructions

1



Wear appropriate safety equipment

- Protect yourself
- Wear safety equipment, such as work gloves, nitrile chemical-resistant gloves, safety glasses, work apron or other protection required by your company

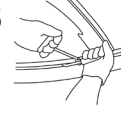
2



Inspect replacement glass

- Spray glass bonding surface and vision area with BETACLEAN™ GC-800 Glass and Surface Cleaner and wipe glass clean with a lint-free paper towel
- Inspect replacement glass for defects, damage or signs of contamination
- Verify primer and adhesives are within use-by dates

3



Cut out the glass

- Protect the customer's vehicle
- Remove all hardware and reveal moldings
- Cut out the windshield using your preferred method

4



Prepare the glass

- Many contaminants are difficult to detect and remove
- Spray glass with BETACLEAN™ GC-800 Glass and Surface Cleaner
- Use Easy-go melamine foam sponge or Scotch-Brite pad to wet scrub the surface
 - This is a mechanical abrasion step, make sure to use some pressure
 - Ensure the entire bonding surface is treated
- While the surface is still wet, wipe surface with a clean paper towel
- Spray glass again with BETACLEAN™ GC-800
 - If the glass cleaner de-wets, repeat steps a through d
 - If the glass cleaner does not de-wet, proceed to glass priming step

4.1



Prime fritted glass (skip this step if using BETASEAL™ ACE or BETASEAL™ Express APG)

- Point pad of BETAPRIME™ CLEAR Advanced SA 1-Step/Frit Primer toward the surface to be primed and pinch tube between thumb and forefinger to break internal vial, releasing the primer
- Allow the pad to saturate; it is not necessary to squeeze the tube. Do not repeatedly break the glass ampoule or "milk" the stick in an effort to squeeze more primer out
- Slowly draw the applicator twice around the surface to be primed to get an even glossy primer film (do not wipe off)
- Wait 2 minutes for the primer to dry before installing the glass in temperatures down to 0°F (-18°C)
- If glass is not installed within 24 hours of original priming, clean then reprime the glass with BETAPRIME™ CLEAR Advanced primer; do not reprime more than once
- When priming glass with BETAPRIME™ CLEAR Advanced primer in temperatures from 0°F (-18°C) to 40°F (4.4°C), the glass should be cleaned at a temperature at or above 40°F (4.4°C) and stored in a manner that will keep it clean and contaminant free

Note: On clear glass without any frit, apply two coats of BETAPRIME™ 5504G allowing each coat to dry.

4.2



Prepare encapsulation or PAAS

- Clean RIM or PVC encapsulation with BETACLEAN™ GC-800 Glass and Surface Cleaner and a clean, lint-free paper towel
- "Wet scrub" the encapsulation with an abrasive pad and BETACLEAN™ GC-800 glass cleaner until the gloss is removed from the surface and it appears matte in finish. Clean again with BETACLEAN™ GC-800 to remove any debris on the surface and allow to dry completely.
- Check the expiration date on the container
- Apply BETAPRIME™ 5504G All-in-One Primer to the RIM or PVC encapsulation surface with dauber
- Apply BETAPRIME™ 5504G to any molding surface that contacts new urethane to promote adhesion
- Allow primer to dry for 2 minutes at 20°F (-7°C) and above and from 20°F (-7°C) down to 0°F (-18°C) allow primer to dry for 6 minutes
- Replace inner seal and cap on bottle immediately

Note: Refer to the DuPont Fixed Glass Installation Guide for instructions on preparing PAAS

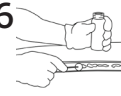
5



Trim back the urethane

- Clean any dirt and debris from around the existing urethane with BETACLEAN™ GC-800 Glass and Surface Cleaner or water and a clean towel
- Trim the urethane, leaving a 1 mm to 2 mm base of original equipment urethane on the pinchweld
- Take care not to damage the vehicle paint or pinchweld
- Any areas of trimmed urethane that require additional cleaning should be carefully wiped with BETACLEAN™ GC-800 Glass or water and a clean towel

6



Prepare the pinchweld

Once body surface is clean and dry, follow these priming steps:

- Check the expiration date on the container

For priming any areas of bare metal (large or small, including scratches):

- Open the bottle of BETAPRIME™ 5504G All-in-One Primer carefully and insert a clean, unused dauber; to avoid spilling, never pour liquid on dauber
- Apply one coat of BETAPRIME™ 5504G with a clean wool dauber to any scratches in the paint or large areas of bare metal
- Allow primer to dry for 2 minutes at 20°F (-7°C) and above. From 20°F (-7°C) down to 0°F (-18°C), allow primer to dry for 6 minutes.
- Apply second coat of BETAPRIME™ 5504G and allow primer to dry for 2 minutes at 20°F (-7°C) and above. From 20°F (-7°C) down to 0°F (-18°C), allow primer to dry for 6 minutes.

For priming painted bonding surfaces (Skip this step if using BETASEAL™ ACE applied to clean OEM paint):

- Open the bottle of BETAPRIME™ 5504G All-in-One Primer carefully and insert a clean, unused dauber; to avoid spilling, never pour liquid on dauber
- Apply one coat of BETAPRIME™ 5504G All-in-One Primer with a clean wool dauber to the painted area where original adhesive may have peeled off or to extend the bonding area when applying adhesive to the glass part
- Allow primer to dry for 2 minutes at 20°F (-7°C) and above and from 20°F (-7°C) down to 0°F (-18°C) allow primer to dry for 6 minutes

Warning: Do not reinsert (double dip) the dauber into the primer bottle if it has touched the body of the vehicle. This could contaminate the remaining primer in the bottle.

7



Apply BETASEAL™ Adhesive (Choose either glass or pinchweld application)

- Hold the applicator in a vertical position 90° to the glass and dispense the adhesive with a continuous motion in a uniform "V" shaped bead
- Apply adhesive to the glass on top of the bond line, matching the location of the original adhesive bead on the glass or apply adhesive to the pinchweld perimeter directly on top of the freshly cut original equipment urethane film
- Either application: Hold the applicator in a vertical position (90°) and dispense the adhesive with a continuous motion in a uniform "V" shaped bead
- Make sure bead is uniform and has no gaps; add material or gently tool joints, if necessary

8



Install the glass

- Carefully place the glass in the body opening
- Adjust glass to precise alignment
- Lightly press it into position

9



Clean up

- Clean any excess uncured urethane
- Clean the newly installed glass with BETACLEAN™ GC-800 Glass and Surface Cleaner
- Clean up any remaining debris or broken glass on seats, floor, door handles and/or dash console

10



Recordkeeping

- Attach master lot code sticker to paperwork or manually record primer and adhesive lot numbers
- Record D.O.T. number from glass part on sticker
- Communicate to the customer when MDAT will be reached and when the vehicle can be driven

DuPont.com/Aftermarket



DuPont™, the DuPont Oval Logo, and all trademarks and service marks denoted with ™, SM or ® are owned by affiliates of DuPont de Nemours, Inc. unless otherwise noted. © 2024 DuPont.

The information set forth herein is furnished free of charge and is based on technical data that DuPont believes to be reliable and falls within the normal range of properties. It is intended for use by persons having technical skill, at their own discretion and risk. This data should not be used to establish specification limits nor used alone as the basis of design. Handling precaution information is given with the understanding that those using it will satisfy themselves that their particular conditions of use present no health or safety hazards. Since conditions of product use and disposal are outside our control, we make no warranties, express or implied, and assume no liability in connection with any use of this information. As with any product, evaluation under end-use conditions prior to specification is essential. Nothing herein is to be taken as a license to operate or a recommendation to infringe on patents.

Form Number 001-20157-OIA1124