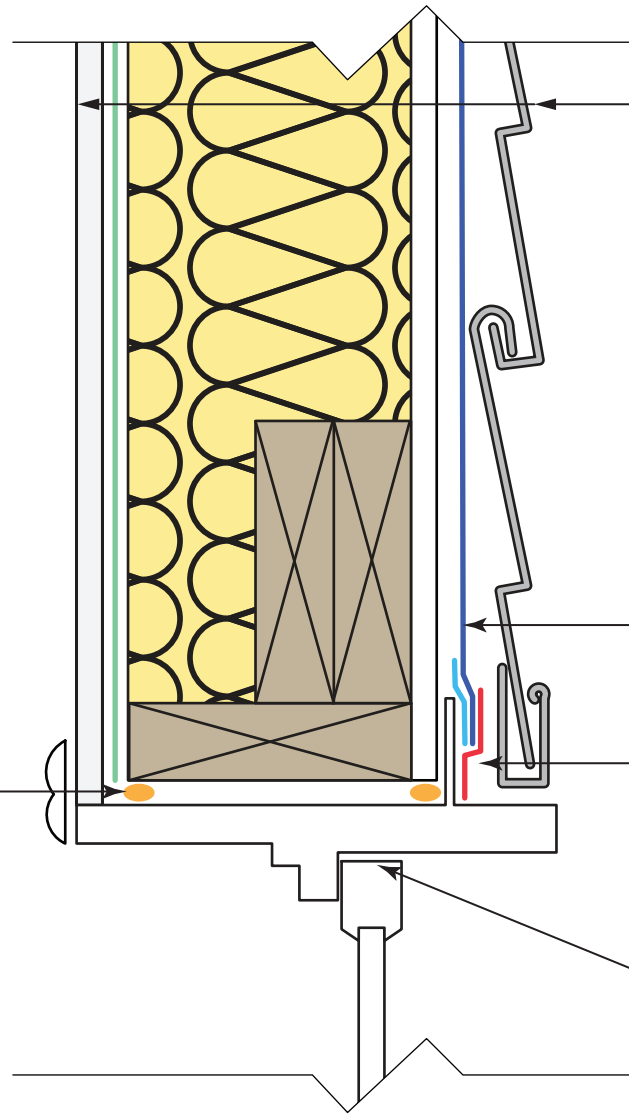


TYPICAL WALL ASSEMBLY

- VINYL SIDING
- DUPONT™ TYVEK® WRB¹**
- OSB SHEATHING
- WOOD STUDS w/ BATT INSULATION
- VAPOR RETARDER (WHERE REQUIRED)²
- GYPSUM BOARD



LAP 6" AND TAPE **TYVEK® WRB¹** OVER VINYL DRIP EDGE USING **DUPONT™ FLEXWRAP™**

INSTALL **FLEXWRAP™** OVER MOUNTING FLANGE. LAP AND TAPE WITH **DUPONT™ TYVEK® TAPE** AT JOINTS (UPPER SHEET OVER LOWER SHEET)

WINDOW WITH INTEGRAL MOUNTING FLANGE

INSTALL TOWER® RESIDENTIAL SEALANT OR RECOMMENDED SEALANT (AND BACKER ROD AS NECESSARY) AROUND THE WINDOW OPENING AT THE INTERIOR. IT IS ALSO ACCEPTABLE TO USE **GREAT STUFF PRO™ WINDOW & DOOR POLYURETHANE FOAM SEALANT**, OR RECOMMENDED FOAM

¹REFER TO THE *FACADE CONSIDERATIONS* SECTION OF THE APPLICABLE DUPONT INSTALLATION GUIDELINES TO HELP DETERMINE THE APPROPRIATE **TYVEK® WRB** FOR THE CLADDING TYPE.

²USE OF INTERIOR VAPOR RETARDER IS DEPENDENT UPON CLIMATE ZONE AND LOCAL BUILDING CODES AND LAWS. CONSULT LOCAL JURISDICTION TO ENSURE APPROPRIATE USE OF VAPOR RETARDERS IN WALL ASSEMBLY.

- NOTES:
- TAPE ALL **TYVEK® WRB** SEAMS WITH **DUPONT™ TYVEK® TAPE**.
 - FLASH ALL PENETRATIONS WITH **DUPONT SELF-ADHERED FLASHING PRODUCTS**.
 - FASTEN **TYVEK® WRB** TO SHEATHING WITH APPROVED FASTENERS AND CORRECT SPACING OF WRAP CAP STAPLES/NAILS (ex. **DUPONT™ TYVEK® WRAP CAP FASTENERS**).
 - DO NOT APPLY **TYVEK® TAPE** OR **DUPONT SELF-ADHERED FLASHING PRODUCTS** OVER **TYVEK® WRAP CAP FASTENERS**, OR RECOMMENDED FASTENERS; HOWEVER, FASTENERS CAN BE INSTALLED OVER THE FLASHING.
 - LOCAL LAWS, ZONING, AND BUILDING CODES VARY AND THEREFORE GOVERNS OVER MATERIAL SELECTION (ex. SHEATHING TYPE, FRAMING SIZE, INSULATION THICKNESS, ETC.) DETAILING SHOWN ABOVE.



SCALE: NOT TO SCALE
REVISION DATE: 4/19/2022
DRAWING: A37

WINDOW HEAD DETAIL
RESIDENTIAL WOOD FRAME STRUCTURE w/ VINYL SIDING