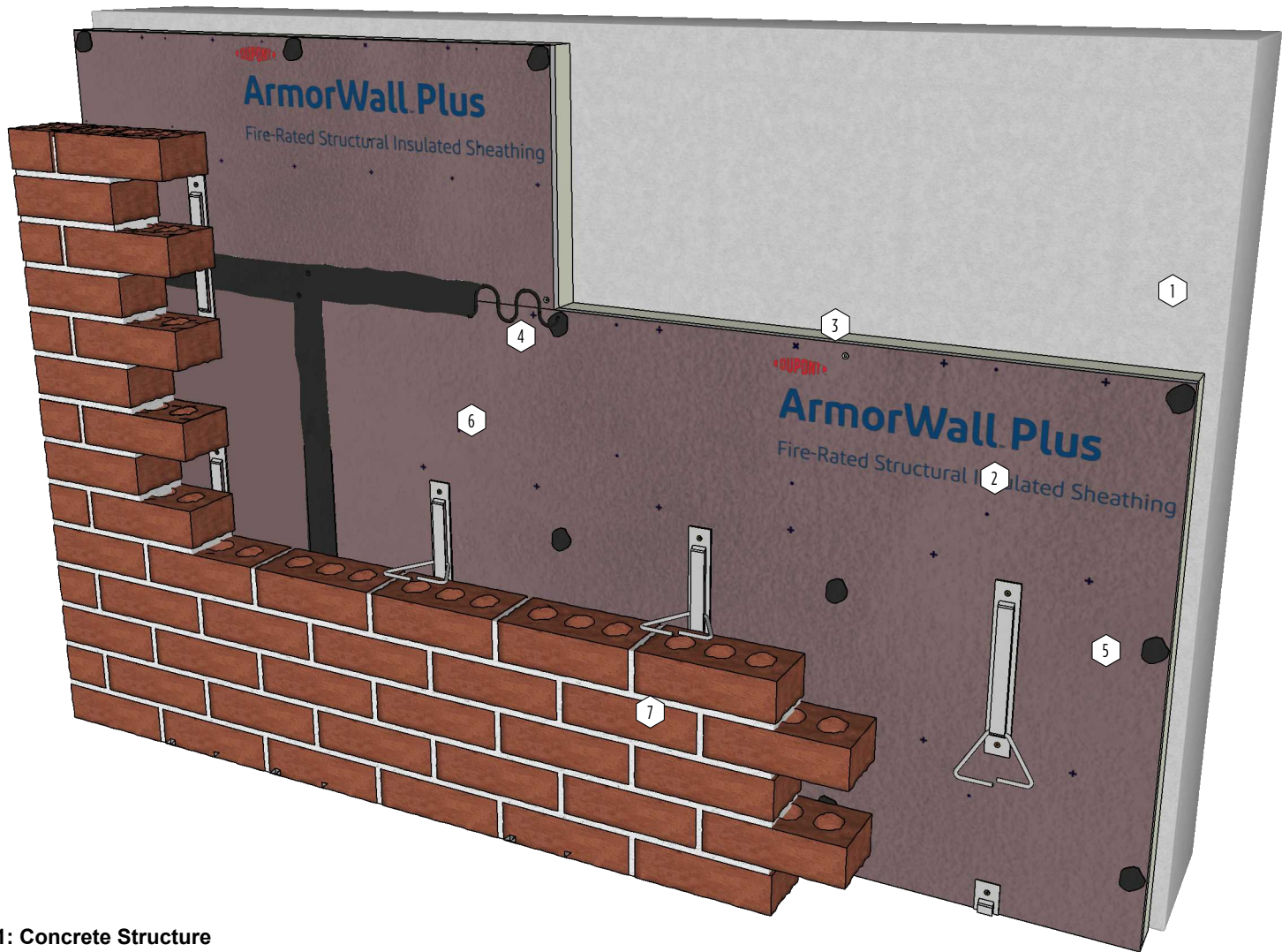


DuPont™ ArmorWall™ System

Assembly Details - Concrete

Table Of Contents	
Title and Table of Contents	1
Full Brick and Mortar Veneer	2
MCM Over Horizontal Hat Channels	3
Lap Siding Over Wood Furring	4
Adhered Stone	5
Adhered Stone Tile	6
Panel Cladding	7
Phenolic Panel Cladding	8
Adhered CF Panel Cladding	9
EF Panel Cladding	10
Adhered Neolith Sintered Stone Panel	11
Rail & Clip Panel Cladding	12
Ceramic Panel Cladding	13
Hard Coat Stucco	14
Notes	15





- 1: Concrete Structure
- 2: ArmorWall Plus Fire-Rated Structural Insulated Sheathing (R10, R15, or R21 Standard)
- 3: #14 Consealor Screw
- 4: ArmorSeal Sealant (Gunnable Grade) at all Seams and Fasteners
- 5: Hohmann & Barnard DW-10 Brick Tie Attached with #10-9 Gimlet Point Self Tapping Screw
- 6: Full Brick and Mortar Veneer



DuPont de Nemours, Inc
Wilmington, DE 19898

For general inquiries, please call
DuPont de Nemours: 1-833-338-7668

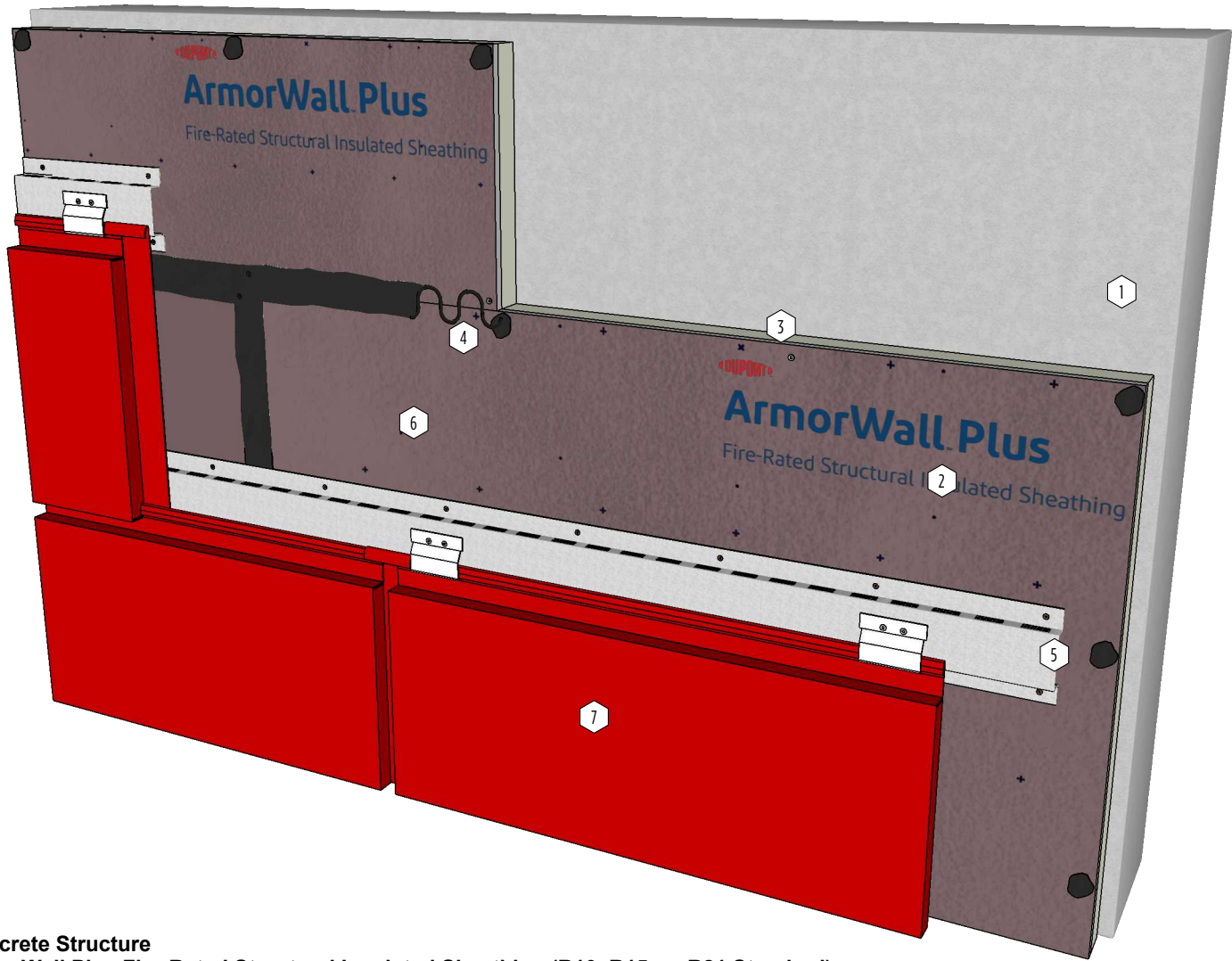
DETAIL TITLE:
FULL BRICK AND MORTAR VENEER ON ARMORWALL
PLUS TO CONCRETE SUBSTRATE FIELD OF WALL

DETAIL NO.:

SCALE:
SCALE

REVISION:
01

- NOTES:
- Pre-Drill concrete substrate prior to fastening ArmorWall per DuPont AmorWall Fastener Guide
 - Self-tapping screw must penetrate a min. of three threads beyond the surface for metal studs and 1" min of thread penetration for cmu/masonry and wood studs.
 - Refer to the Fastener Guide for Dupont™ ArmorWall™ Systems for Dupont™ approved cladding fasteners
 - Cladding fasteners must penetrate 1" min. into ArmorWall Plus
 - This information is provided by DuPont as reference only. Please consult and comply with local building codes, regulations, and laws
 - For additional information regarding product installation, please refer to the current DuPont™ ArmorWall™ Installation Guide.



- 1: Concrete Structure
- 2: ArmorWall Plus Fire-Rated Structural Insulated Sheathing (R10, R15, or R21 Standard)
- 3: #14 Consealor Screw
- 4: ArmorSeal Sealant (Gunnable Grade) at all Seams and Fasteners
- 5: Vented Hat Channel Fastened with #10-19 Gimlet Point Self Tapping Screw
- 6: Cladding System Clip Attached with Approved Fasteners
- 7. Metal Wall Panel



DuPont de Nemours, Inc
Wilmington, DE 19898

For general inquiries, please call
DuPont de Nemours: 1-833-338-7668

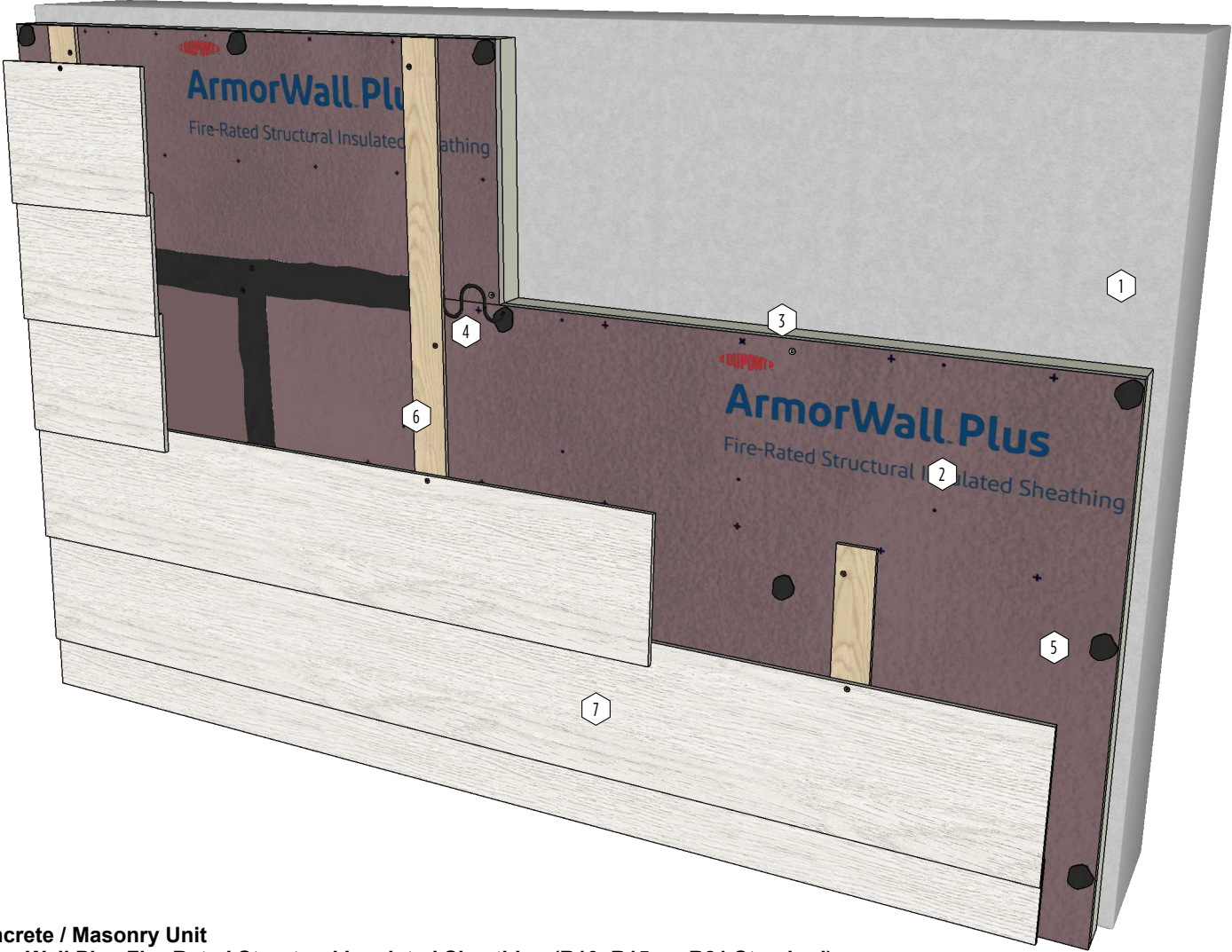
DETAIL TITLE:
MCM OVER HORIZONTAL HAT CHANNELS ON
ARMORWALL PLUS TO CONCRETE FIELD OF WALL

DETAIL NO.:

SCALE:
SCALE

REVISION:
01

- NOTES:
- Pre-Drill concrete substrate prior to fastening ArmorWall per DuPont AmorWall Fastener Guide
 - Self-tapping screw must penetrate a min. of three threads beyond the surface for metal studs and 1" min of thread penetration for cmu/masonry and wood studs.
 - Refer to the Fastener Guide for Dupont™ ArmorWall™ Systems for Dupont™ approved cladding fasteners
 - Cladding fasteners must penetrate 1" min. into ArmorWall Plus
 - This information is provided by DuPont as reference only. Please consult and comply with local building codes, regulations, and laws
 - For additional information regarding product installation, please refer to the current DuPont™ ArmorWall™ Installation Guide.



- 1: Concrete / Masonry Unit
- 2: ArmorWall Plus Fire-Rated Structural Insulated Sheathing (R10, R15, or R21 Standard)
- 3: #14 Consealor Screw
- 4: ArmorSeal Sealant (Gunnable Grade) at all Seams and Fasteners
- 5: Furring Strips Attached with #10-9 Gimlet Point Self Tapping Screw
- 6: Fiber Cement Lap Siding



DuPont de Nemours, Inc
Wilmington, DE 19898

For general inquiries, please call
DuPont de Nemours: 1-833-338-7668

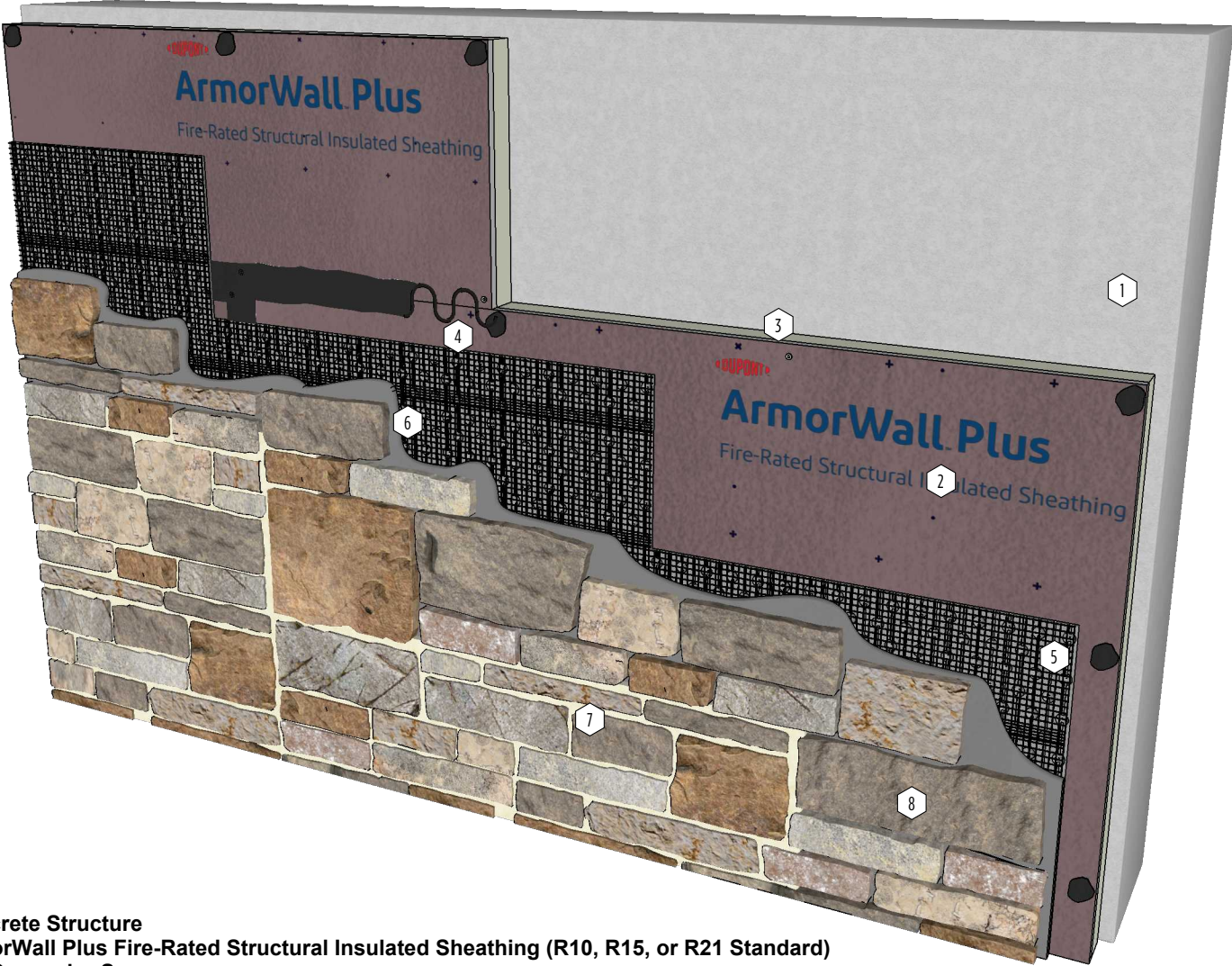
DETAIL TITLE:
LAP SIDING OVER WOOD FURRING ON ARMORWALL
PLUS TO CONCRETE FIELD OF WALL

DETAIL NO.:

SCALE:
SCALE

REVISION:
01

- NOTES:
- Pre-Drill concrete substrate prior to fastening ArmorWall per DuPont AmorWall Fastener Guide
 - Self-tapping screw must penetrate a min. of three threads beyond the surface for metal studs and 1" min of thread penetration for cmu/masonry and wood studs.
 - Refer to the Fastener Guide for Dupont™ ArmorWall™ Systems for Dupont™ approved cladding fasteners
 - Cladding fasteners must penetrate 1" min. into ArmorWall Plus
 - This information is provided by DuPont as reference only. Please consult and comply with local building codes, regulations, and laws
 - For additional information regarding product installation, please refer to the current DuPont™ ArmorWall™ Installation Guide.



- 1: Concrete Structure
- 2: ArmorWall Plus Fire-Rated Structural Insulated Sheathing (R10, R15, or R21 Standard)
- 3: #14 Consealor Screw
- 4: ArmorSeal Sealant (Gunnable Grade) at all Seams and Fasteners
- 5: Delta Dry and Lath or Equivalent Non-permeable Drainage Mat Attached with #10-9 Gimlet Point Self Tapping Screw
- 6: Veneer Mortar
- 7: Adhered Stone
- 8: Standard Pointing Mortar



DuPont de Nemours, Inc
Wilmington, DE 19898

For general inquiries, please call
DuPont de Nemours: 1-833-338-7668

DETAIL TITLE:
ADHERED STONE ON ARMORWALL PLUS TO
CONCRETE SUBSTRATE FIELD OF WALL

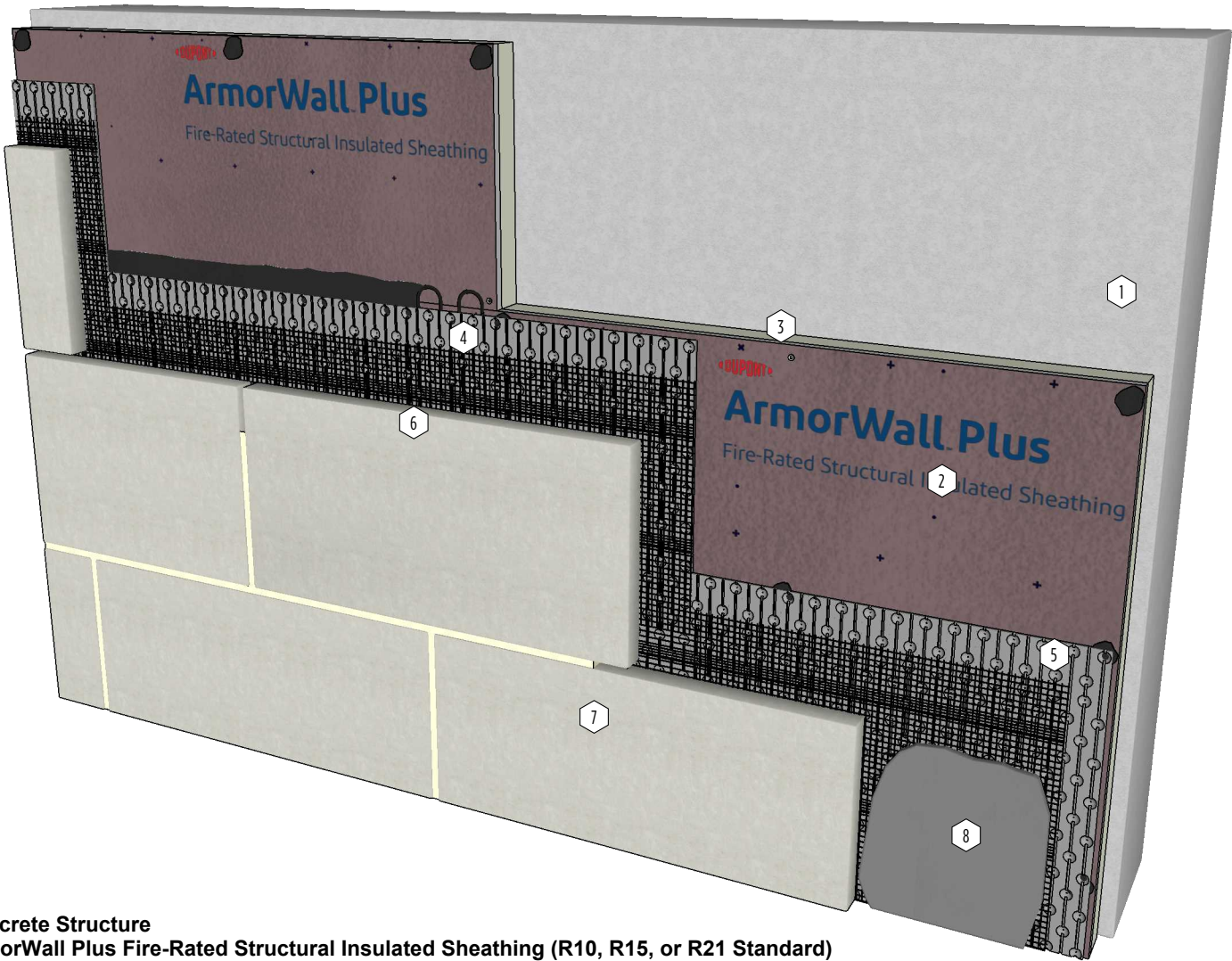
DETAIL NO.:

SCALE:
SCALE

REVISION:
01

NOTES:

- Pre-Drill concrete substrate prior to fastening ArmorWall per DuPont AmorWall Fastener Guide
- Self-tapping screw must penetrate a min. of three threads beyond the surface for metal studs and 1" min of thread penetration for cmu/masonry and wood studs.
- Refer to the Fastener Guide for Dupont™ ArmorWall™ Systems for Dupont™ approved cladding fasteners
- Cladding fasteners must penetrate 1" min. into ArmorWall Plus
- This information is provided by DuPont as reference only. Please consult and comply with local building codes, regulations, and laws
- For additional information regarding product installation, please refer to the current DuPont™ ArmorWall™ Installation Guide.



- 1: Concrete Structure
- 2: ArmorWall Plus Fire-Rated Structural Insulated Sheathing (R10, R15, or R21 Standard)
- 3: #14 Consealor Screw
- 4: ArmorSeal Sealant (Gunnable Grade) at all Seams and Fasteners
- 5: Delta Dry and Lath or Equivalent Non-permeable Drainage Mat Attached with #10-9 Gimlet Point Self Tapping Screw
- 6: Veneer Mortar
- 7: Adhered Stone Tile
- 8: Standard Pointing Mortar



DuPont de Nemours, Inc
Wilmington, DE 19898

For general inquiries, please call
DuPont de Nemours: 1-833-338-7668

DETAIL TITLE:
ADHERED STONE TILE ON ARMORWALL PLUS TO
CONCRETE SUBSTRATE FIELD OF WALL

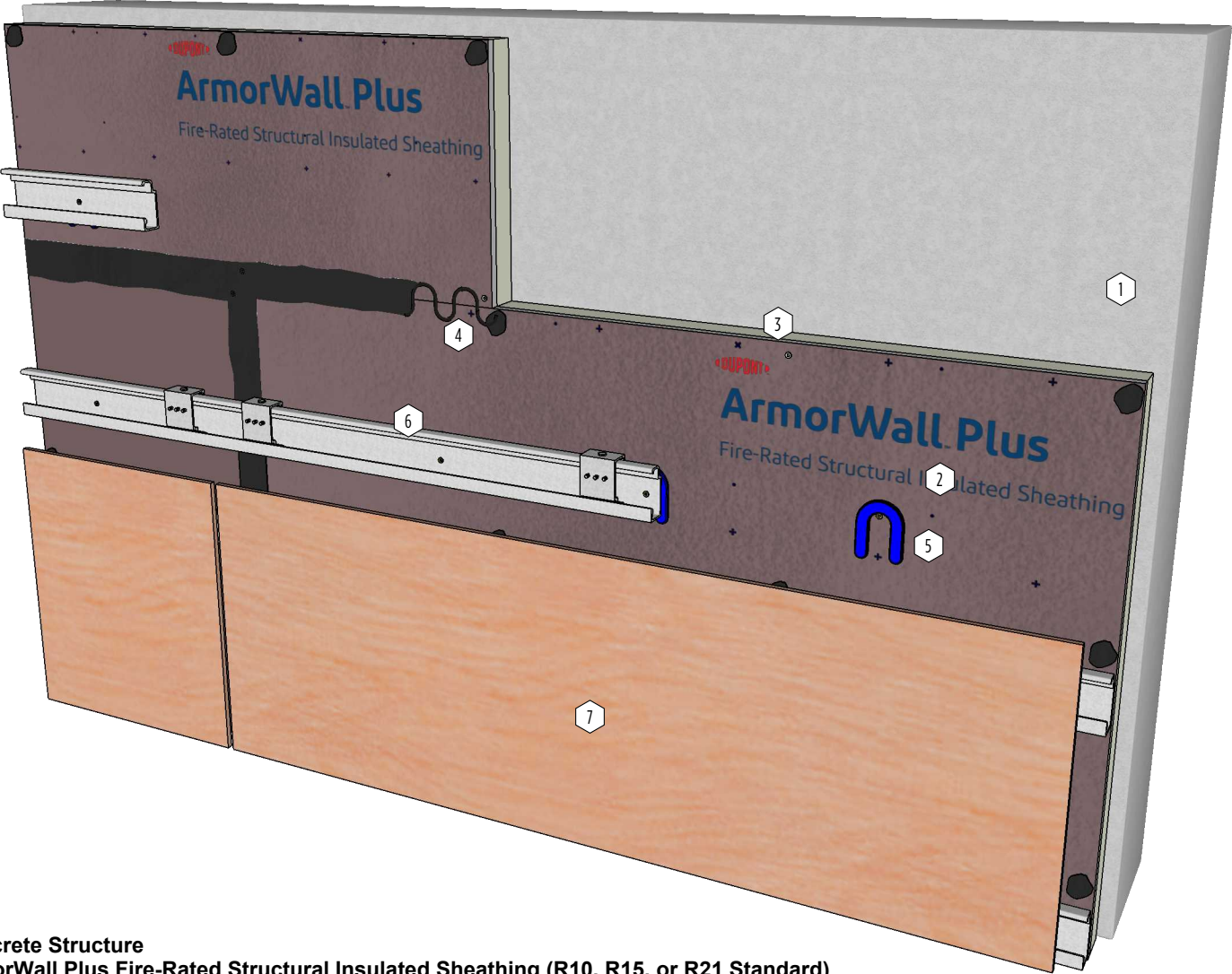
DETAIL NO.:

SCALE:
SCALE

REVISION:
01

NOTES:

- Pre-Drill concrete substrate prior to fastening ArmorWall per DuPont AmorWall Fastener Guide
- Self-tapping screw must penetrate a min. of three threads beyond the surface for metal studs and 1" min of thread penetration for cmu/masonry and wood studs.
- Refer to the Fastener Guide for Dupont™ ArmorWall™ Systems for Dupont™ approved cladding fasteners
- Cladding fasteners must penetrate 1" min. into ArmorWall Plus
- This information is provided by DuPont as reference only. Please consult and comply with local building codes, regulations, and laws
- For additional information regarding product installation, please refer to the current DuPont™ ArmorWall™ Installation Guide.



- 1: Concrete Structure
- 2: ArmorWall Plus Fire-Rated Structural Insulated Sheathing (R10, R15, or R21 Standard)
- 3: #14 Consealor Screw
- 4: ArmorSeal Sealant (Gunnable Grade) at all Seams and Fasteners
- 5: Plastic Horseshoe Shim
- 6: Horizontal Rail and Clip Cladding Mount Attached w/ #10-9 Gimlet Point Self Tapping Screws
- 7: Cladding System Panels



DuPont de Nemours, Inc
Wilmington, DE 19898

For general inquiries, please call
DuPont de Nemours: 1-833-338-7668

DETAIL TITLE:
PANEL CLADDING ON ARMORWALL PLUS TO
CONCRETE SUBSTRATE FIELD OF WALL

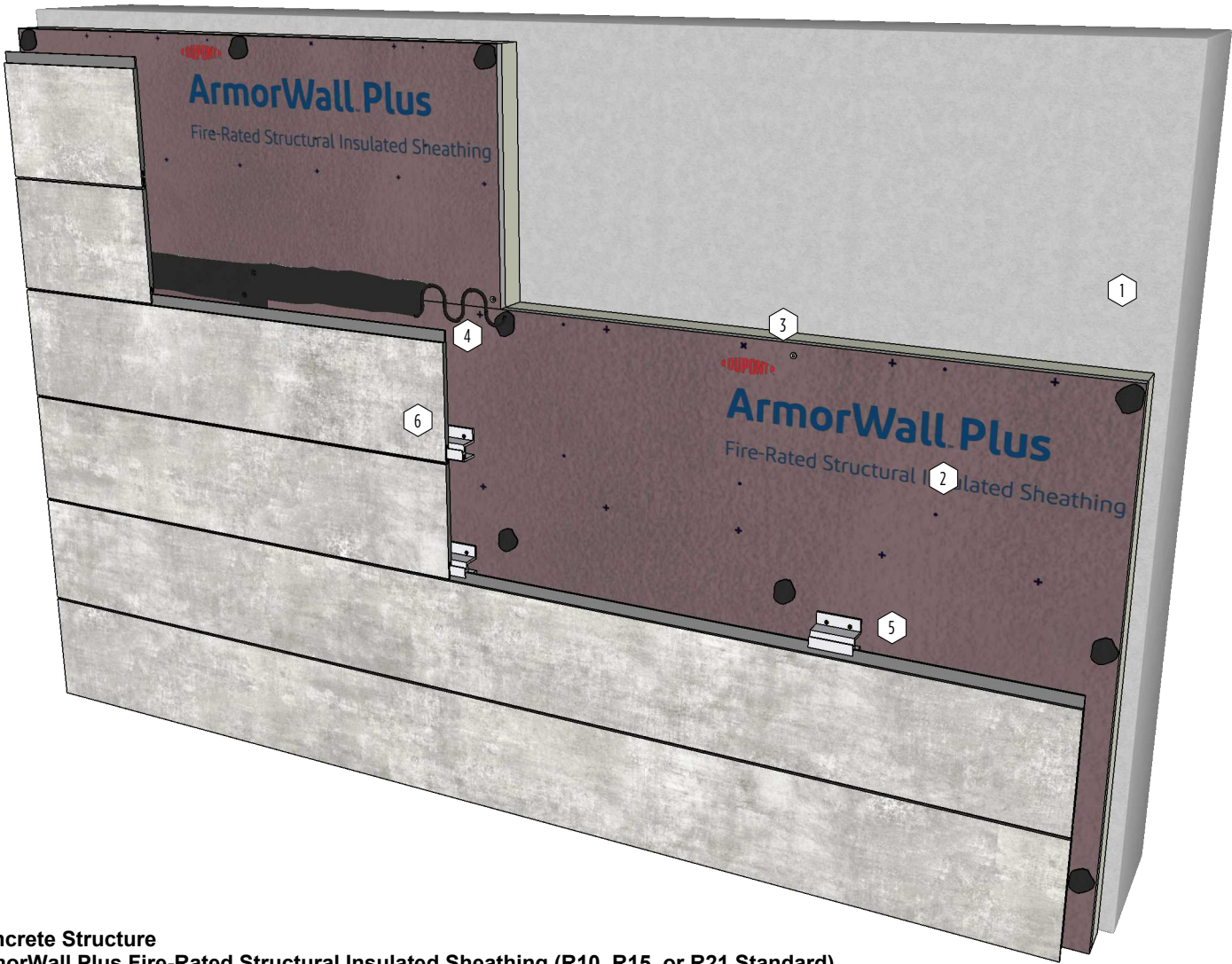
DETAIL NO.:

SCALE:
SCALE

REVISION:
01

NOTES:

- Pre-Drill concrete substrate prior to fastening ArmorWall per DuPont AmorWall Fastener Guide
- Self-tapping screw must penetrate a min. of three threads beyond the surface for metal studs and 1" min of thread penetration for cmu/masonry and wood studs.
- Refer to the Fastener Guide for Dupont™ ArmorWall™ Systems for Dupont™ approved cladding fasteners
- Cladding fasteners must penetrate 1" min. into ArmorWall Plus
- This information is provided by DuPont as reference only. Please consult and comply with local building codes, regulations, and laws
- For additional information regarding product installation, please refer to the current DuPont™ ArmorWall™ Installation Guide.



- 1: Concrete Structure
- 2: ArmorWall Plus Fire-Rated Structural Insulated Sheathing (R10, R15, or R21 Standard)
- 3: #14 Consealor Screw
- 4: ArmorSeal Sealant (Gunnable Grade) at all Seams and Fasteners
- 5: Cladding System Clip Attached with #10-9 Gimlet Point Self Tapping Screw
- 6: Phenolic Cladding System Panels



DuPont de Nemours, Inc
Wilmington, DE 19898

For general inquiries, please call
DuPont de Nemours: 1-833-338-7668

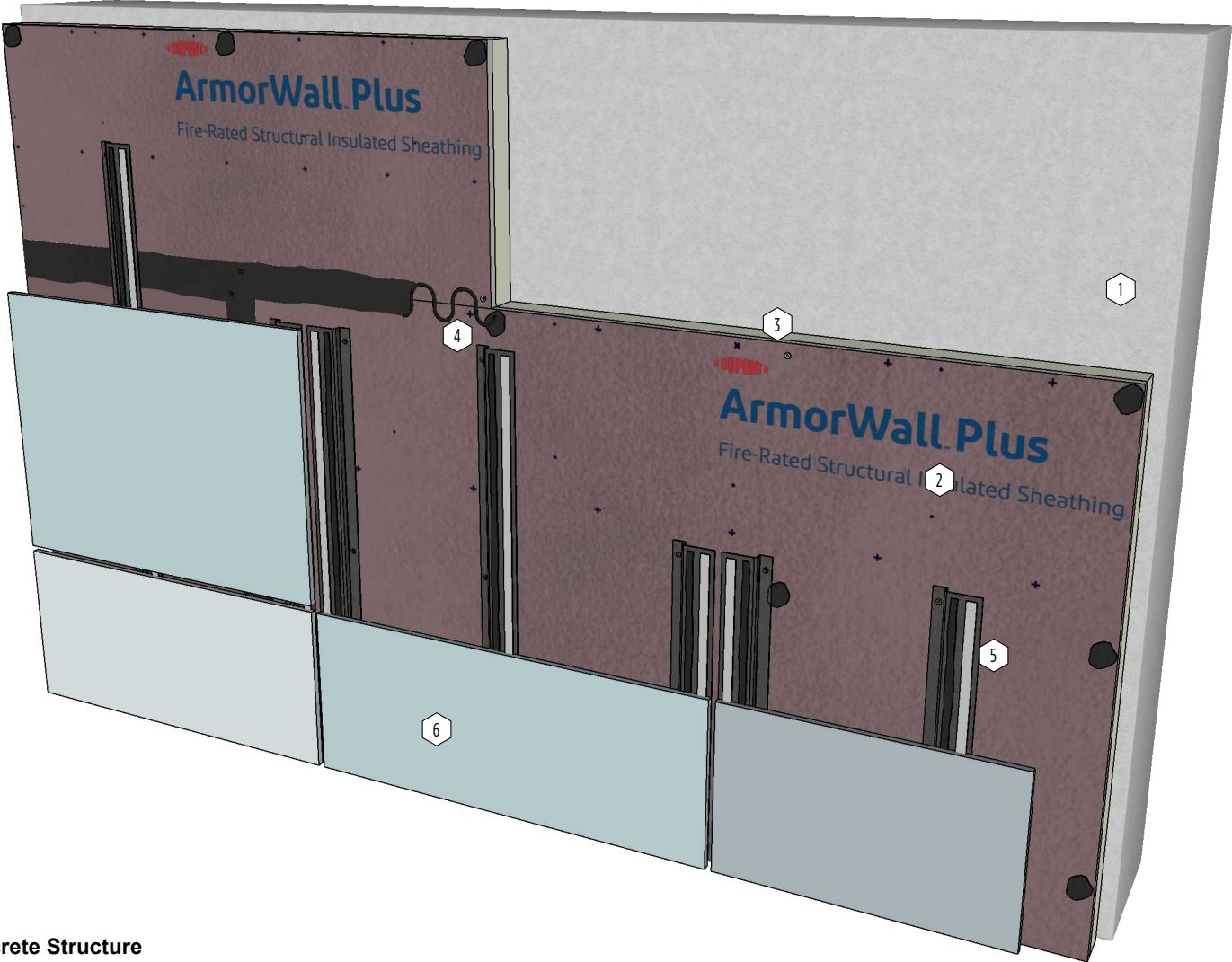
DETAIL TITLE:
PHENOLIC PANEL CLADDING ON ARMORWALL PLUS
TO CONCRETE SUBSTRATE FIELD OF WALL

DETAIL NO.:

SCALE:
SCALE

REVISION:
01

- NOTES:
- Pre-Drill concrete substrate prior to fastening ArmorWall per DuPont AmorWall Fastener Guide
 - Self-tapping screw must penetrate a min. of three threads beyond the surface for metal studs and 1" min of thread penetration for cmu/masonry and wood studs.
 - Refer to the Fastener Guide for Dupont™ ArmorWall™ Systems for Dupont™ approved cladding fasteners
 - Cladding fasteners must penetrate 1" min. into ArmorWall Plus
 - This information is provided by DuPont as reference only. Please consult and comply with local building codes, regulations, and laws
 - For additional information regarding product installation, please refer to the current DuPont™ ArmorWall™ Installation Guide.



- 1: Concrete Structure
- 2: ArmorWall Plus Fire-Rated Structural Insulated Sheathing (R10, R15, or R21 Standard)
- 3: #14 Consealor Screw
- 4: ArmorSeal Sealant (Gunnable Grade) at all Seams and Fasteners
- 5: Zee Cladding Mount Fastened with #10-9 Gimlet Point Self Tapping Screw
- 6: Adhered Concealed Fastener (CF) Cladding Panels



DuPont de Nemours, Inc
Wilmington, DE 19898

For general inquiries, please call
DuPont de Nemours: 1-833-338-7668

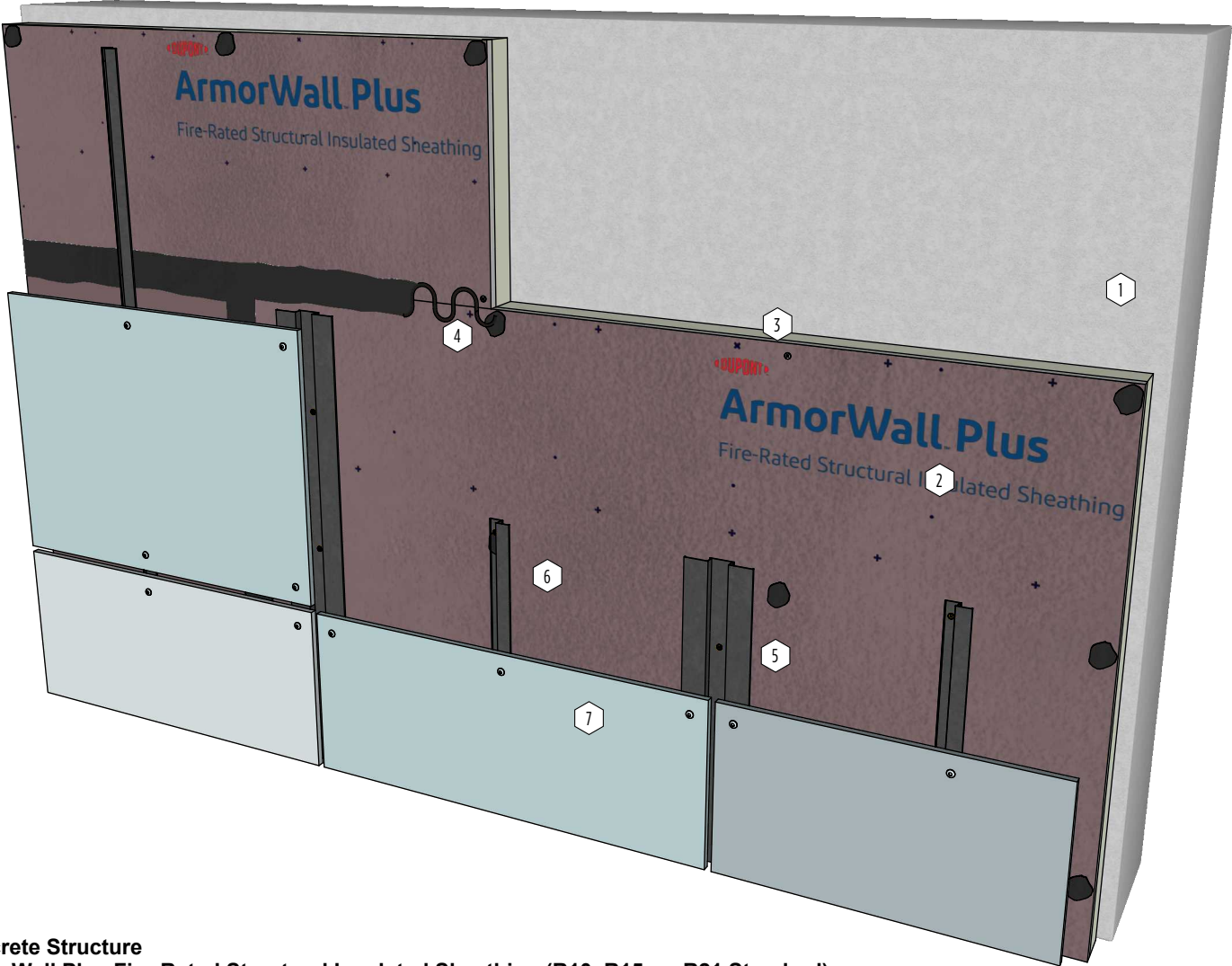
DETAIL TITLE:
ADHERED CF PANEL CLADDING ON ARMORWALL
PLUS TO CONCRETE SUBSTRATE FIELD OF WALL

DETAIL NO.:

SCALE:
SCALE

REVISION:
01

- NOTES:
- Pre-Drill concrete substrate prior to fastening ArmorWall per DuPont AmorWall Fastener Guide
 - Self-tapping screw must penetrate a min. of three threads beyond the surface for metal studs and 1" min of thread penetration for cmu/masonry and wood studs.
 - Refer to the Fastener Guide for Dupont™ ArmorWall™ Systems for Dupont™ approved cladding fasteners
 - Cladding fasteners must penetrate 1" min. into ArmorWall Plus
 - This information is provided by DuPont as reference only. Please consult and comply with local building codes, regulations, and laws
 - For additional information regarding product installation, please refer to the current DuPont™ ArmorWall™ Installation Guide.



- 1: Concrete Structure
- 2: ArmorWall Plus Fire-Rated Structural Insulated Sheathing (R10, R15, or R21 Standard)
- 3: #14 Consealor Screw
- 4: ArmorSeal Sealant (Gunnable Grade) at all Seams and Fasteners
- 5: Inverted Hat Cladding Mount Fastened with #10-9 Gimlet Point Self Tapping Screw
- 6: Inverted Zee Cladding Mount Fastened with #10-9 Gimlet Point Self Tapping Screw
- 7: Mechanically Fastened Exposed Fastener (EF) Cladding Panels



DuPont de Nemours, Inc
Wilmington, DE 19898

For general inquiries, please call
DuPont de Nemours: 1-833-338-7668

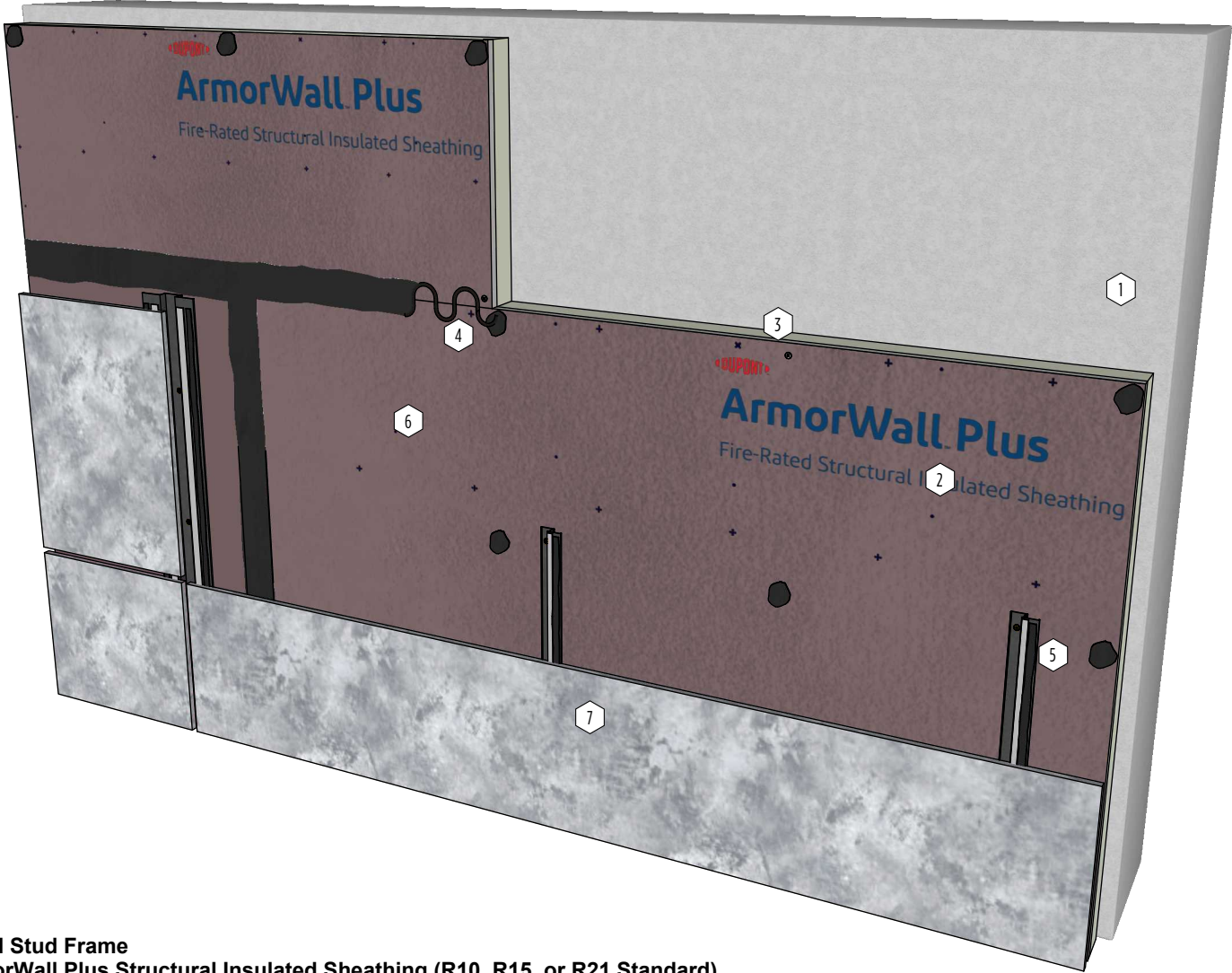
DETAIL TITLE:
EF PANEL CLADDING ON ARMORWALL PLUS TO
CONCRETE SUBSTRATE FIELD OF WALL

DETAIL NO.:

SCALE:
SCALE

REVISION:
01

- NOTES:
- Pre-Drill concrete substrate prior to fastening ArmorWall per DuPont AmorWall Fastener Guide
 - Self-tapping screw must penetrate a min. of three threads beyond the surface for metal studs and 1" min of thread penetration for cmu/masonry and wood studs.
 - Refer to the Fastener Guide for Dupont™ ArmorWall™ Systems for Dupont™ approved cladding fasteners
 - Cladding fasteners must penetrate 1" min. into ArmorWall Plus
 - This information is provided by DuPont as reference only. Please consult and comply with local building codes, regulations, and laws
 - For additional information regarding product installation, please refer to the current DuPont™ ArmorWall™ Installation Guide.



- 1: Metal Stud Frame
- 2: ArmorWall Plus Structural Insulated Sheathing (R10, R15, or R21 Standard)
- 3: #14-13 Self Tapping Screw
- 4: ArmorSeal Sealant (Gunnable Grade) at all Seams and Fasteners
- 5: MOTO Extrusions Inverted Hat Cladding Mount Fastened with #10-9 Gimlet Point Self Tapping Screw
- 6: MOTO Extrusions Inverted Zee Cladding Mount Fastened with #10-9 Gimlet Point Self Tapping Screw
- 7: Tape and a Bead of Silicone Adhesive per Zee and on Both Sides of the Inverted Hat
- 8: Adhered Neolith Sintered Stone Panel



DuPont de Nemours, Inc
Wilmington, DE 19898

For general inquiries, please call
DuPont de Nemours: 1-833-338-7668

DETAIL TITLE:
ADHERED CF PANEL CLADDING ON ARMORWALL
PLUS TO METAL STUD FIELD OF WALL

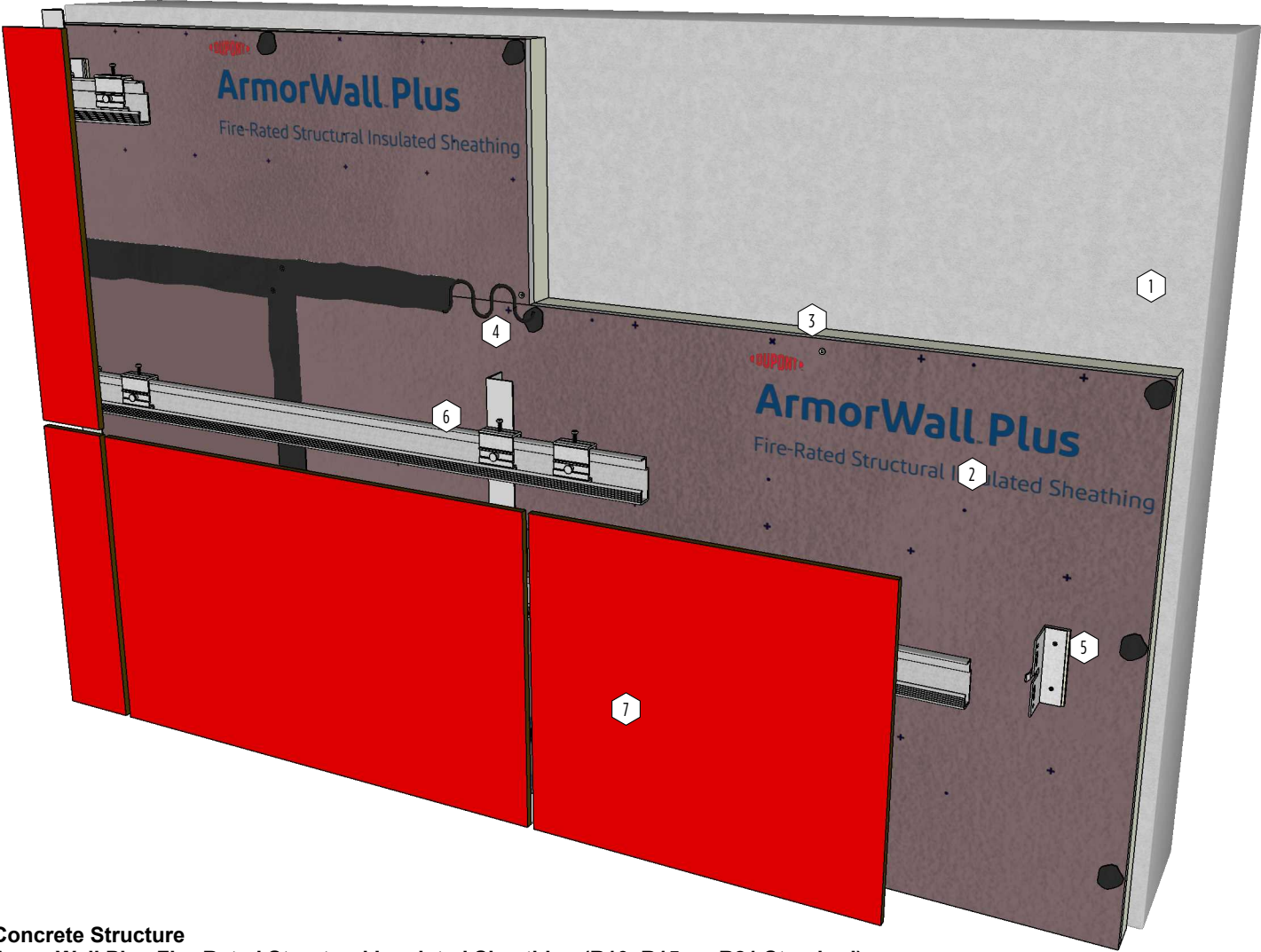
DETAIL NO.:

SCALE:
SCALE

REVISION:
01

NOTES:

- Pre-Drill concrete substrate prior to fastening ArmorWall per DuPont AmorWall Fastener Guide
- Self-tapping screw must penetrate a min. of three threads beyond the surface for metal studs and 1" min of thread penetration for cmu/masonry and wood studs.
- Refer to the Fastener Guide for Dupont™ ArmorWall™ Systems for Dupont™ approved cladding fasteners
- Cladding fasteners must penetrate 1" min. into ArmorWall Plus
- This information is provided by DuPont as reference only. Please consult and comply with local building codes, regulations, and laws
- For additional information regarding product installation, please refer to the current DuPont™ ArmorWall™ Installation Guide.



- 1: Concrete Structure
- 2: ArmorWall Plus Fire-Rated Structural Insulated Sheathing (R10, R15, or R21 Standard)
- 3: #14 Consealor Screw
- 4: ArmorSeal Sealant (Gunnable Grade) at all Seams and Fasteners
- 5: Cladding System Clip Attached with #10-9 Gimlet Point Self Tapping Screw
- 6: Horizontal Rail w/ Sliding Panel Clip on Vertical T-Bar Cladding Mounting System
- 7: Cladding System Panels



DuPont de Nemours, Inc
Wilmington, DE 19898

For general inquiries, please call
DuPont de Nemours: 1-833-338-7668

DETAIL TITLE:
PANEL CLADDING ON ARMORWALL PLUS TO
CONCRETE SUBSTRATE FIELD OF WALL

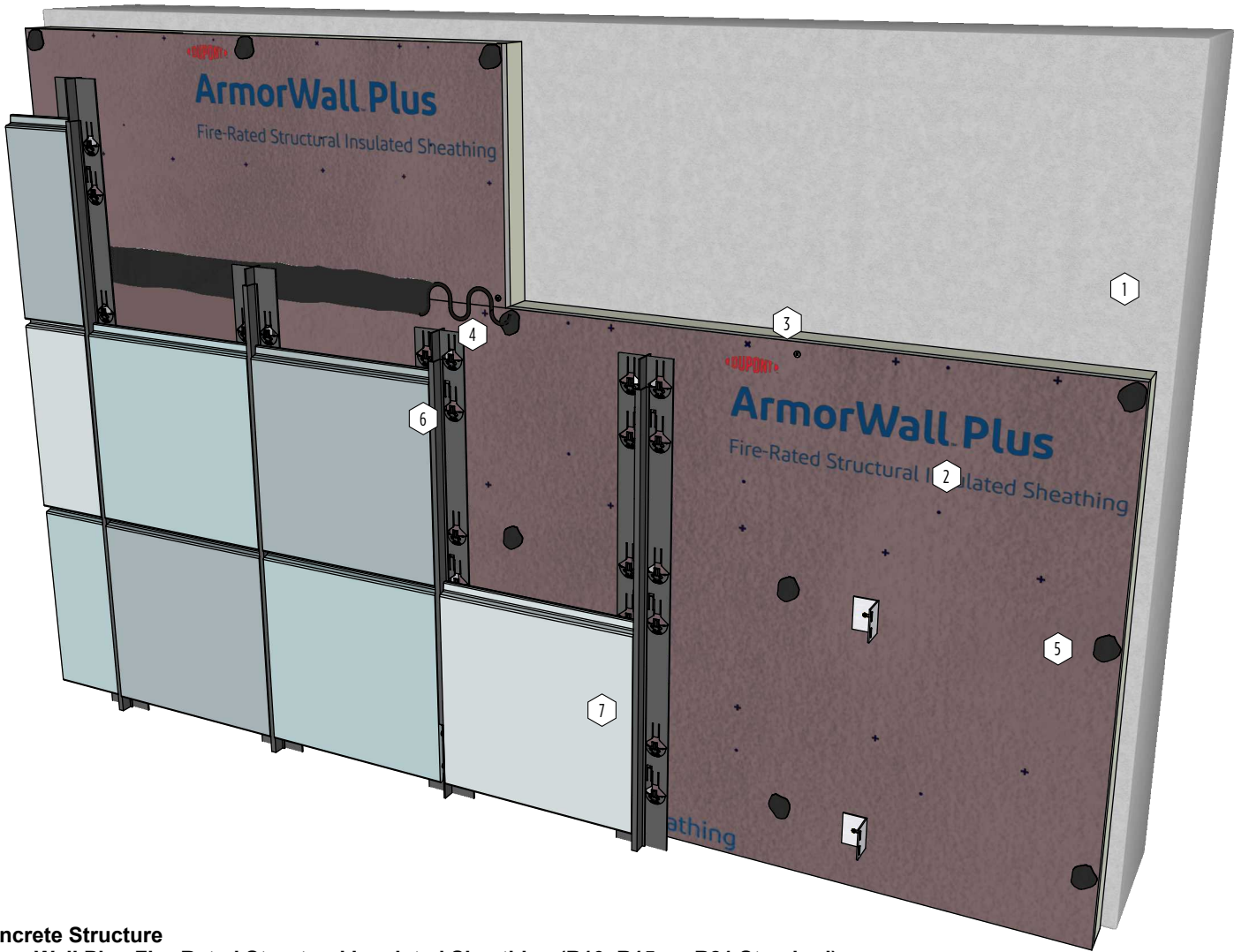
DETAIL NO.:

SCALE:
SCALE

REVISION:
01

NOTES:

- Pre-Drill concrete substrate prior to fastening ArmorWall per DuPont AmorWall Fastener Guide
- Self-tapping screw must penetrate a min. of three threads beyond the surface for metal studs and 1" min of thread penetration for cmu/masonry and wood studs.
- Refer to the Fastener Guide for Dupont™ ArmorWall™ Systems for Dupont™ approved cladding fasteners
- Cladding fasteners must penetrate 1" min. into ArmorWall Plus
- This information is provided by DuPont as reference only. Please consult and comply with local building codes, regulations, and laws
- For additional information regarding product installation, please refer to the current DuPont™ ArmorWall™ Installation Guide.



- 1: Concrete Structure
- 2: ArmorWall Plus Fire-Rated Structural Insulated Sheathing (R10, R15, or R21 Standard)
- 3: #14 Consealor Screw
- 4: ArmorSeal Sealant (Gunnable Grade) at all Seams and Fasteners
- 5: Cladding System Clip Attached with #10-9 Gimlet Point Self Tapping Screw
- 6: Cladding Vertical Rail Mounting System
- 7: Ceramic Wall Panel



DuPont de Nemours, Inc
Wilmington, DE 19898

For general inquiries, please call
DuPont de Nemours: 1-833-338-7668

DETAIL TITLE:
CERAMIC PANEL CLADDING ON ARMORWALL PLUS TO
CONCRETE SUBSTRATE FIELD OF WALL

DETAIL NO.:

SCALE:
SCALE

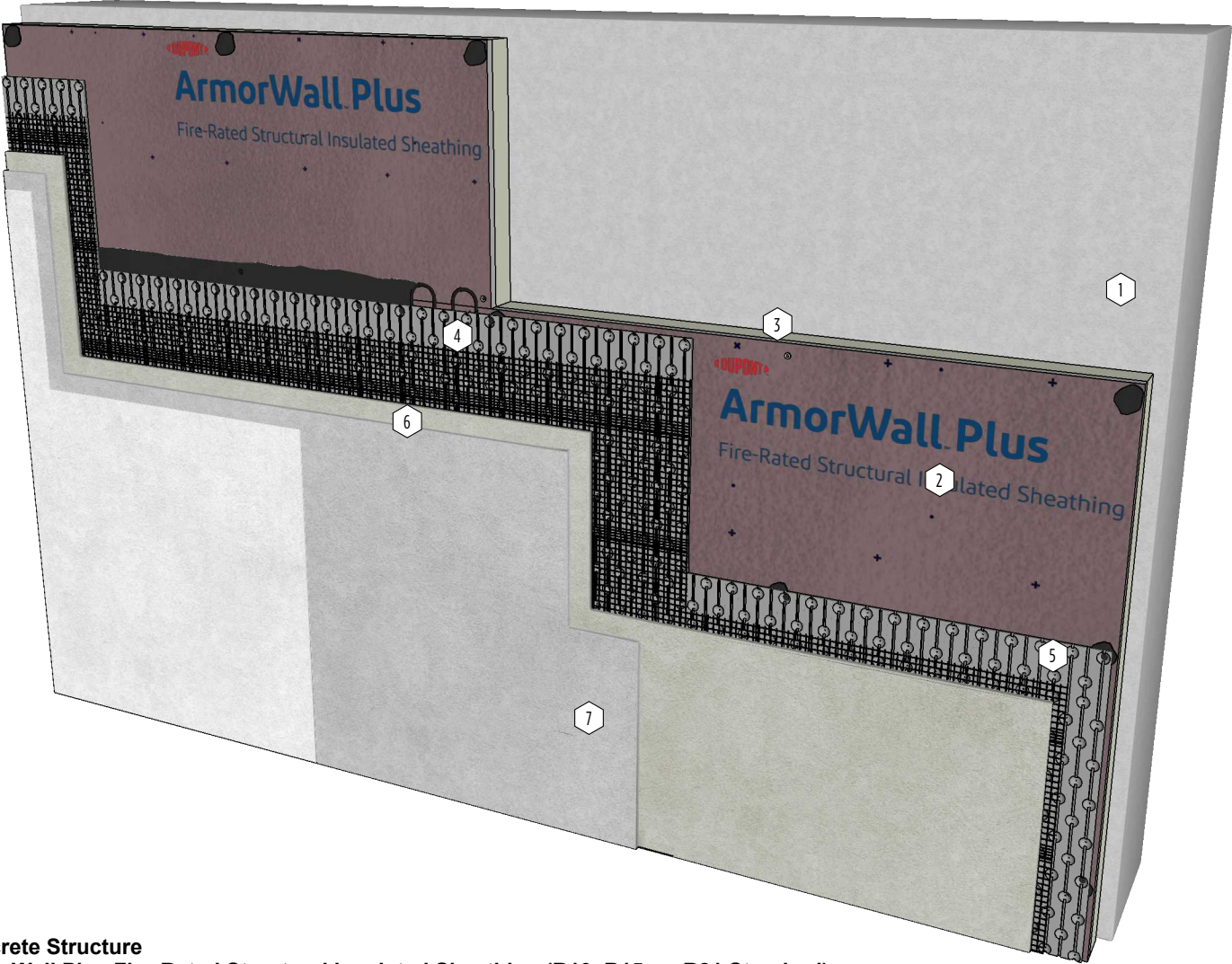
REVISION:
01

NOTES:

- Pre-Drill concrete substrate prior to fastening ArmorWall per DuPont AmorWall Fastener Guide
- Self-tapping screw must penetrate a min. of three threads beyond the surface for metal studs and 1" min of thread penetration for cmu/masonry and wood studs.
- Refer to the Fastener Guide for Dupont™ ArmorWall™ Systems for Dupont™ approved cladding fasteners
- Cladding fasteners must penetrate 1" min. into ArmorWall Plus
- This information is provided by DuPont as reference only. Please consult and comply with local building codes, regulations, and laws
- For additional information regarding product installation, please refer to the current DuPont™ ArmorWall™ Installation Guide.

This information is based on information that DuPont believes to be reliable. It is subject to change as additional knowledge and experience are gained. It is not intended as a substitute for any testing you may conduct to determine for yourself the suitability of our products for your particular purpose. Since conditions for use are outside the DuPont's control, DUPONT MAKES NO WARRANTIES, EXPRESS OR IMPLIED, AND ASSUMES NO LIABILITY IN CONNECTION WITH THE USE OF THIS INFORMATION. This information is not intended as a license to operate under or a recommendation to infringe any trademark, patent or technical information of DuPont or other persons covering any material or its use.

©2023 DuPont. All rights reserved. DuPont®, the DuPont Oval Logo, and all trademarks and service marks denoted with ™, SM or ® are owned by affiliates of DuPont de Nemours, Inc. unless otherwise noted.



- 1: Concrete Structure
- 2: ArmorWall Plus Fire-Rated Structural Insulated Sheathing (R10, R15, or R21 Standard)
- 3: #14 Consealor Screw
- 4: ArmorSeal Sealant (Gunnable Grade) at all Seams and Fasteners
- 5: Delta Dry and Lath or Equivalent Non-permeable Drainage Mat Attached with #10-9 Gimlet Point Self Tapping Screw
- 6: Hard Stucco Scratch Coat
- 7: Hard Stucco Brown Coat
- 8: Hard Stucco Finish Coat



DuPont de Nemours, Inc
Wilmington, DE 19898

For general inquiries, please call
DuPont de Nemours: 1-833-338-7668

DETAIL TITLE:
HARD COAT STUCCO ON ARMORWALL PLUS TO
CONCRETE SUBSTRATE FIELD OF WALL

DETAIL NO.:

SCALE:
SCALE

REVISION:
01

NOTES:

- Pre-Drill concrete substrate prior to fastening ArmorWall per DuPont AmorWall Fastener Guide
- Self-tapping screw must penetrate a min. of three threads beyond the surface for metal studs and 1" min of thread penetration for cmu/masonry and wood studs.
- Refer to the Fastener Guide for Dupont™ ArmorWall™ Systems for Dupont™ approved cladding fasteners
- Cladding fasteners must penetrate 1" min. into ArmorWall Plus
- This information is provided by DuPont as reference only. Please consult and comply with local building codes, regulations, and laws
- For additional information regarding product installation, please refer to the current DuPont™ ArmorWall™ Installation Guide.

This information is based on information that DuPont believes to be reliable. It is subject to change as additional knowledge and experience are gained. It is not intended as a substitute for any testing you may conduct to determine for yourself the suitability of our products for your particular purpose. Since conditions for use are outside the DuPont's control, DUPONT MAKES NO WARRANTIES, EXPRESS OR IMPLIED, AND ASSUMES NO LIABILITY IN CONNECTION WITH THE USE OF THIS INFORMATION. This information is not intended as a license to operate under or a recommendation to infringe any trademark, patent or technical information of DuPont or other persons covering any material or its use.

©2023 DuPont. All rights reserved. DuPont®, the DuPont Oval Logo, and all trademarks and service marks denoted with ™, ™ or ® are owned by affiliates of DuPont de Nemours, Inc. unless otherwise noted.



For more information, visit us at
www.dupont.com/building.html
or call us at 1-833-338-7668

NOTICE: DuPont believes this information to be reliable. It is subject to change as additional knowledge and experience are gained. It is not intended as a substitute for any testing you may conduct to determine for yourself the suitability of our products for your particular purpose. Customer is also responsible for ensuring its use of product, including workplace and disposal practices are in compliance with applicable laws and regulations. Since conditions for use are outside the control of DuPont, DuPont de Nemours, Inc. OR its affiliates MAKE NO WARRANTIES, EXPRESSED OR IMPLIED, INCLUDING BUT NOT LIMITED TO WARRANTIES OF MERCHANTABILITY OR FITNESS FOR A PARTICULAR PURPOSE AND ASSUMES NO LIABILITY IN CONNECTION WITH ANY USE OF THIS INFORMATION. This information is not intended as a license to operate under or a recommendation to infringe any trademark, patent or technical information of DuPont or other persons covering any material or its use.