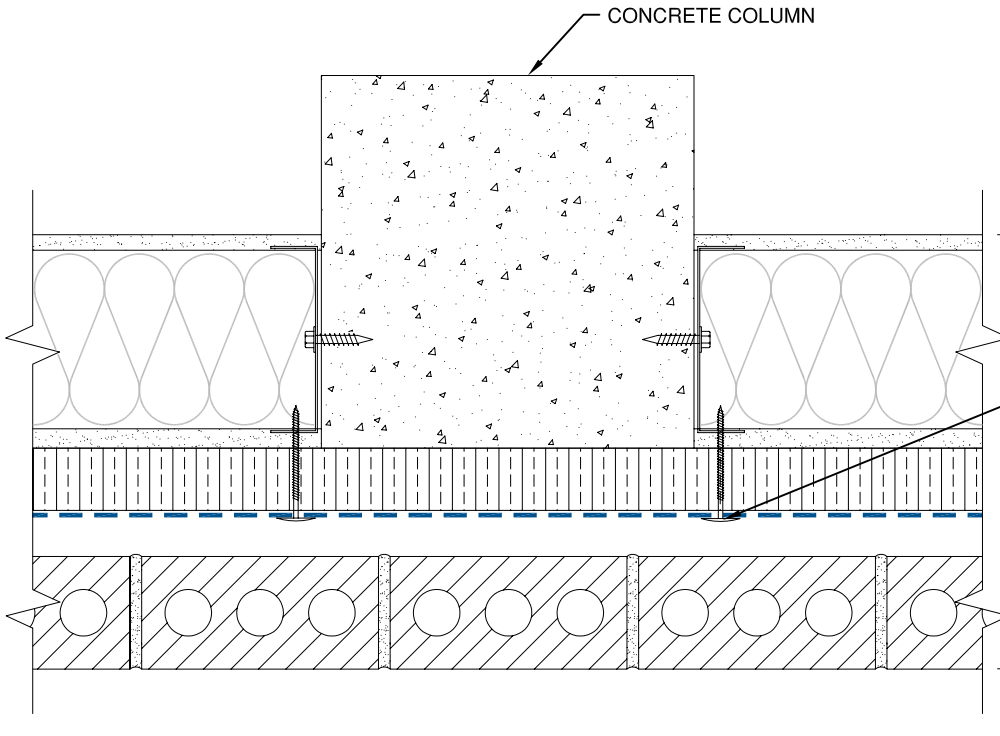


TYPICAL WALL
 INTERIOR GYPSUM BOARD
 STEEL STUDS W/BATT INSULATION
 EXTERIOR GYPSUM BOARD
 MINERAL FIBER INSULATION
 (VAPOR PERMEABLE)
DUPONT™ TYVEK® COMMERCIALWRAP®
 AIR SPACE
 BRICK VENEER

MAINTAIN RECOMMENDED
 FASTENER SPACING

BRICK TIE BASE PLATE WITH
DUPONT™ STRAIGHTFLASH™ PATCH

NOTE:
 MECHANICALLY FASTEN **DUPONT™**
TYVEK® COMMERCIALWRAP® TO
 CONCRETE COLUMN IF NECESSARY
 TO MAINTAIN RECOMMENDED
 FASTENER SPACING



TYPICAL WALL
 INTERIOR GYPSUM BOARD
 STEEL STUDS W/BATT INSULATION
 EXTERIOR GYPSUM BOARD
 MINERAL FIBER INSULATION
 (VAPOR PERMEABLE)
DUPONT™ TYVEK®
COMMERCIALWRAP®
 AIR SPACE
 BRICK VENEER

MAINTAIN RECOMMENDED
 FASTENER SPACING

NOTE:
 MECHANICALLY FASTEN **DUPONT™**
TYVEK® COMMERCIALWRAP® TO
 CONCRETE COLUMN IF NECESSARY
 TO MAINTAIN RECOMMENDED
 FASTENER SPACING

- NOTE**
- 1) SEAL ALL DUPONT™ TYVEK® WEATHER BARRIER SEAMS AND REPAIR MINOR HOLES WITH DUPONT™ TYVEK® TAPE.
 - 2) FASTEN DUPONT™ TYVEK® WEATHER BARRIER WITH RECOMMENDED FASTENERS AND SPACING.
 - 3) INTERIOR VAPOR RETARDER MAY BE REQUIRED IN SOME REGIONS.
 - 4) THIS INFORMATION IS PROVIDED BY DUPONT AS REFERENCE ONLY; PLEASE CONSULT LOCAL BUILDING CODES, REGULATIONS AND LAWS TO DETERMINE THE APPROPRIATE CONSTRUCTION METHODS AND MATERIALS NEEDED.

SCALE: NOT TO SCALE

REVISION DATE: 11/17/10

DRAWING: CW-BXO-206

CONCRETE COLUMN TRANSITION

BRICK VENEER / EXTERIOR INSULATION (WRAP OVER) / STEEL STUD WALL



Tyvek.