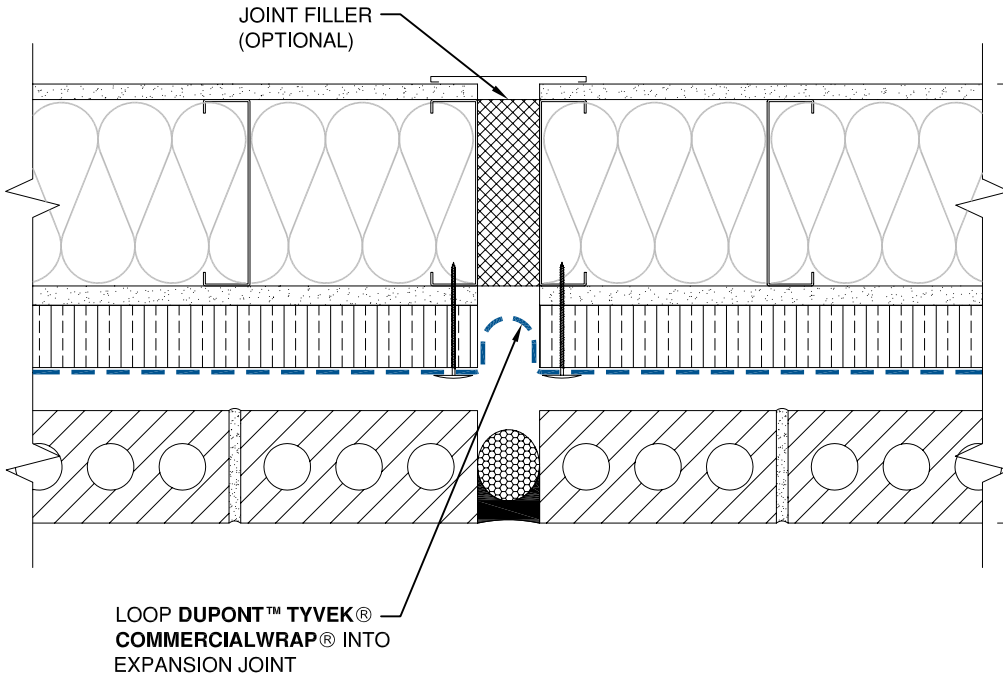


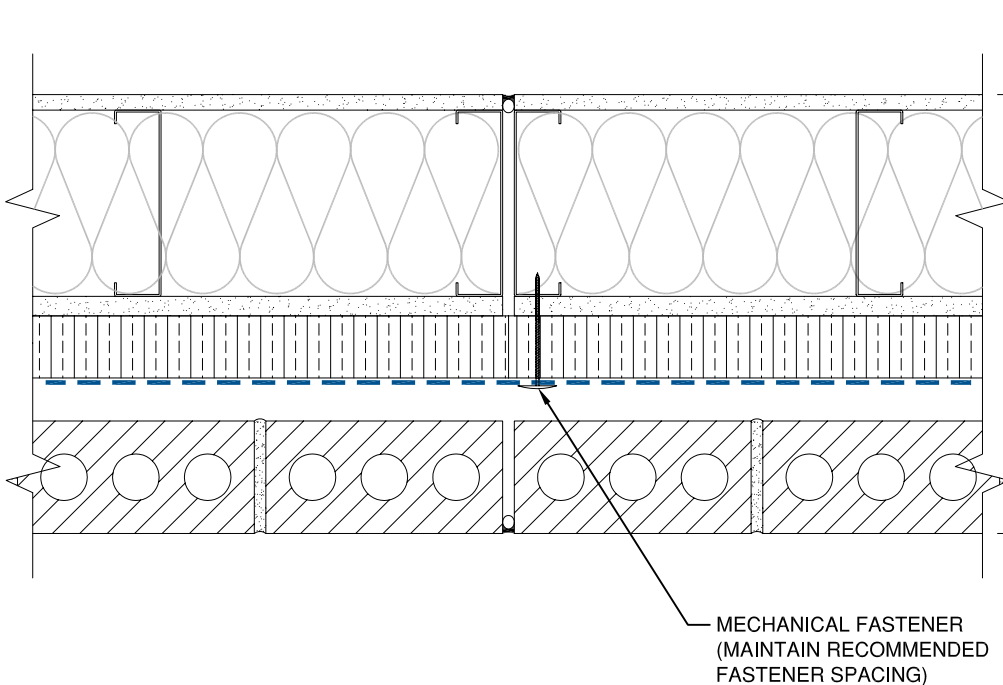
## EXPANSION JOINT



TYPICAL WALL  
 INTERIOR GYPSUM BOARD  
 STEEL STUDS W/BATT INSULATION  
 EXTERIOR GYPSUM BOARD  
 MINERAL FIBER INSULATION  
 (VAPOR PERMEABLE)  
**DUPONT™ TYVEK®**  
**COMMERCIALWRAP®**  
 AIR SPACE  
 BRICK VENEER

**NOTE:**  
 PROVIDE SUFFICIENT SLACK IN  
 MEMBRANE AT EXPANSION JOINT  
 TO ACCOMMODATE MOVEMENT.

## CONTROL JOINT



TYPICAL WALL  
 INTERIOR GYPSUM BOARD  
 STEEL STUDS W/BATT INSULATION  
 EXTERIOR GYPSUM BOARD  
 MINERAL FIBER INSULATION  
 (VAPOR PERMEABLE)  
**DUPONT™ TYVEK®**  
**COMMERCIALWRAP®**  
 AIR SPACE  
 BRICK VENEER

**NOTE**

- 1) SEAL ALL DUPONT™ TYVEK® WEATHER BARRIER SEAMS AND REPAIR MINOR HOLES WITH DUPONT™ TYVEK® TAPE.
- 2) FASTEN DUPONT™ TYVEK® WEATHER BARRIER WITH RECOMMENDED FASTENERS AND SPACING.
- 3) INTERIOR VAPOR RETARDER MAY BE REQUIRED IN SOME REGIONS.
- 4) THIS INFORMATION IS PROVIDED BY DUPONT AS REFERENCE ONLY; PLEASE CONSULT LOCAL BUILDING CODES, REGULATIONS AND LAWS TO DETERMINE THE APPROPRIATE CONSTRUCTION METHODS AND MATERIALS NEEDED.

SCALE: NOT TO SCALE

REVISION DATE: 11/17/10

DRAWING: CW-BXO-207

**EXPANSION JOINT / CONTROL JOINT - METHOD 1**  
 BRICK VENEER / EXTERIOR INSULATION (WRAP OVER) / STEEL STUD WALL



Tyvek.