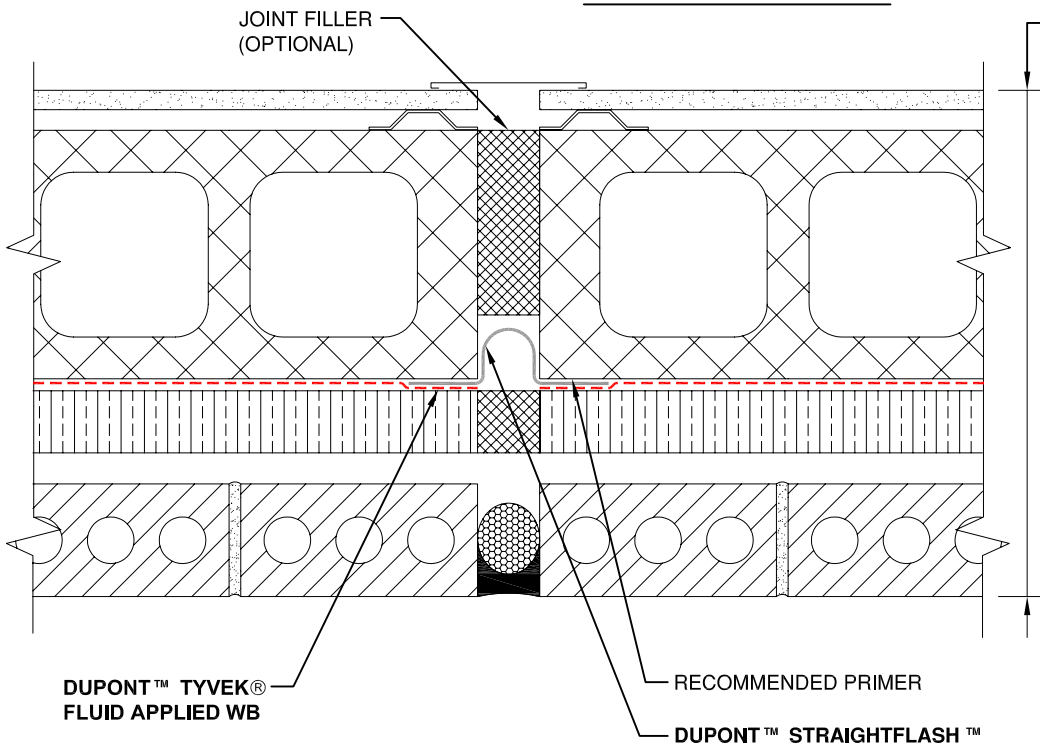


EXPANSION JOINT



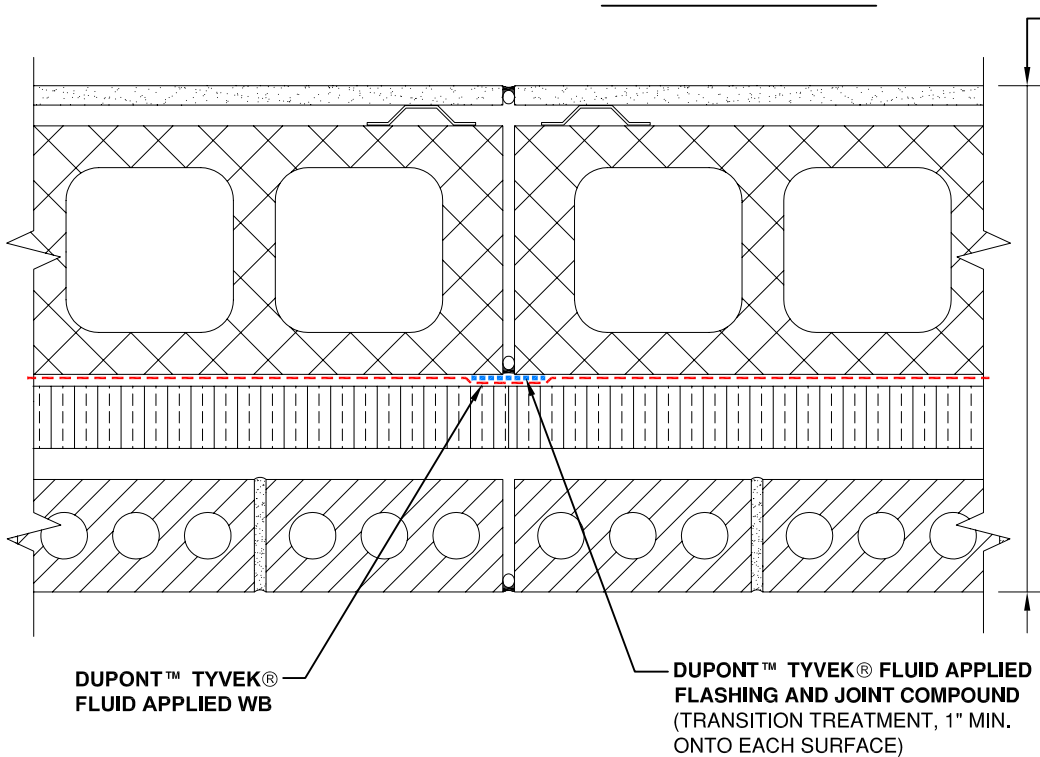
TYPICAL WALL

INTERIOR GYPSUM BOARD
 CMU OR CONCRETE WALL
**DUPONT™ TYVEK® FLUID
 APPLIED WB**
 MINERAL FIBER INSULATION
 (VAPOR PERMEABLE)
 AIR SPACE
 BRICK VENEER

NOTE:

PROVIDE SUFFICIENT SLACK IN
 MEMBRANE AT EXPANSION JOINT
 TO ACCOMMODATE MOVEMENT.

CONTROL JOINT



TYPICAL WALL

INTERIOR GYPSUM BOARD
 CMU OR CONCRETE WALL
**DUPONT™ TYVEK® FLUID
 APPLIED WB**
 MINERAL FIBER INSULATION
 (VAPOR PERMEABLE)
 AIR SPACE
 BRICK VENEER

NOTE

- 1) INTERIOR VAPOR RETARDER MAY BE REQUIRED IN SOME REGIONS.
- 2) THIS INFORMATION IS PROVIDED BY DUPONT AS REFERENCE ONLY; PLEASE CONSULT LOCAL BUILDING CODES, REGULATIONS AND LAWS TO DETERMINE THE APPROPRIATE CONSTRUCTION METHODS AND MATERIALS NEEDED.

SCALE: NOT TO SCALE

REVISION DATE: 11/17/10

DRAWING: FA-BX-105

EXPANSION JOINT / CONTROL JOINT - METHOD 1
 BRICK VENEER / CMU WALL



Tyvek.

FLUID APPLIED WB