

**DUPONT™ SEALANT FOR TYVEK®
FLUID APPLIED SYSTEM**
(USE BACKER ROD AS NECESSARY)

**DUPONT™ FLEXWRAP™ NF or
DUPONT™ STRAIGHTFLASH™**
(2" ONTO FACE OF WALL)

WINDOW FRAME

SEALANT
BY OTHERS

GYPSUM BOARD

BATT INSULATION

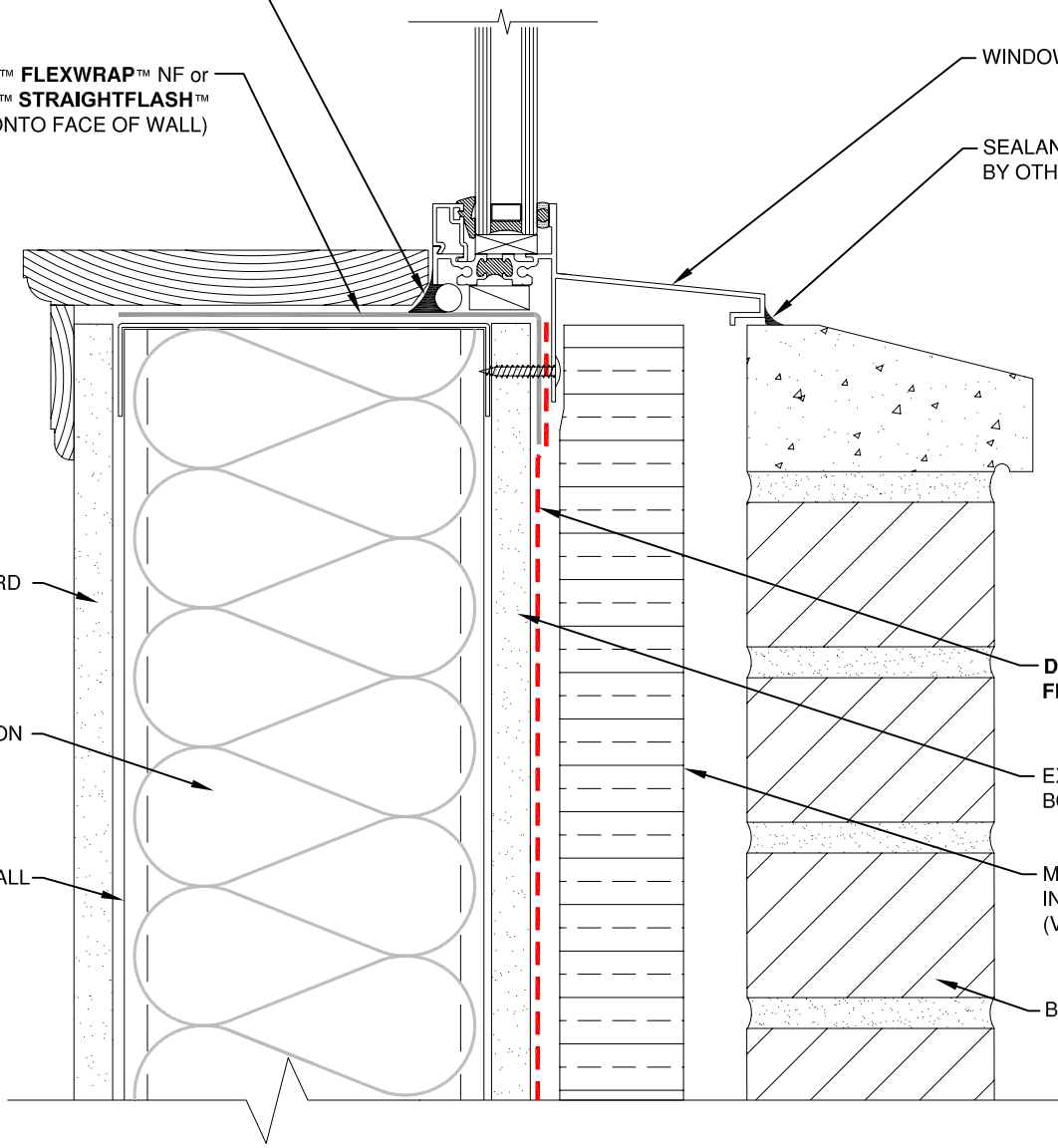
STEEL STUD WALL

**DUPONT™ TYVEK®
FLUID APPLIED WB**

EXTERIOR GYPSUM
BOARD

MINERAL FIBER
INSULATION
(VAPOR PERMEABLE)

BRICK VENEER



NOTE

- 1) INTERIOR VAPOR RETARDER MAY BE REQUIRED IN SOME REGIONS.
- 2) THIS INFORMATION IS PROVIDED BY DUPONT AS REFERENCE ONLY; PLEASE CONSULT LOCAL BUILDING CODES, REGULATIONS AND LAWS TO DETERMINE THE APPROPRIATE CONSTRUCTION METHODS AND MATERIALS NEEDED.



Tyvek.
FLUID APPLIED WB

SCALE: NOT TO SCALE
REVISION DATE: 4/28/10
DRAWING: FA-BX-W203s

FLANGED WINDOW SILL - METHOD 2

BRICK VENEER / EXTERIOR INSULATION / STEEL STUD WALL / SELF-ADHERED FLASHING