

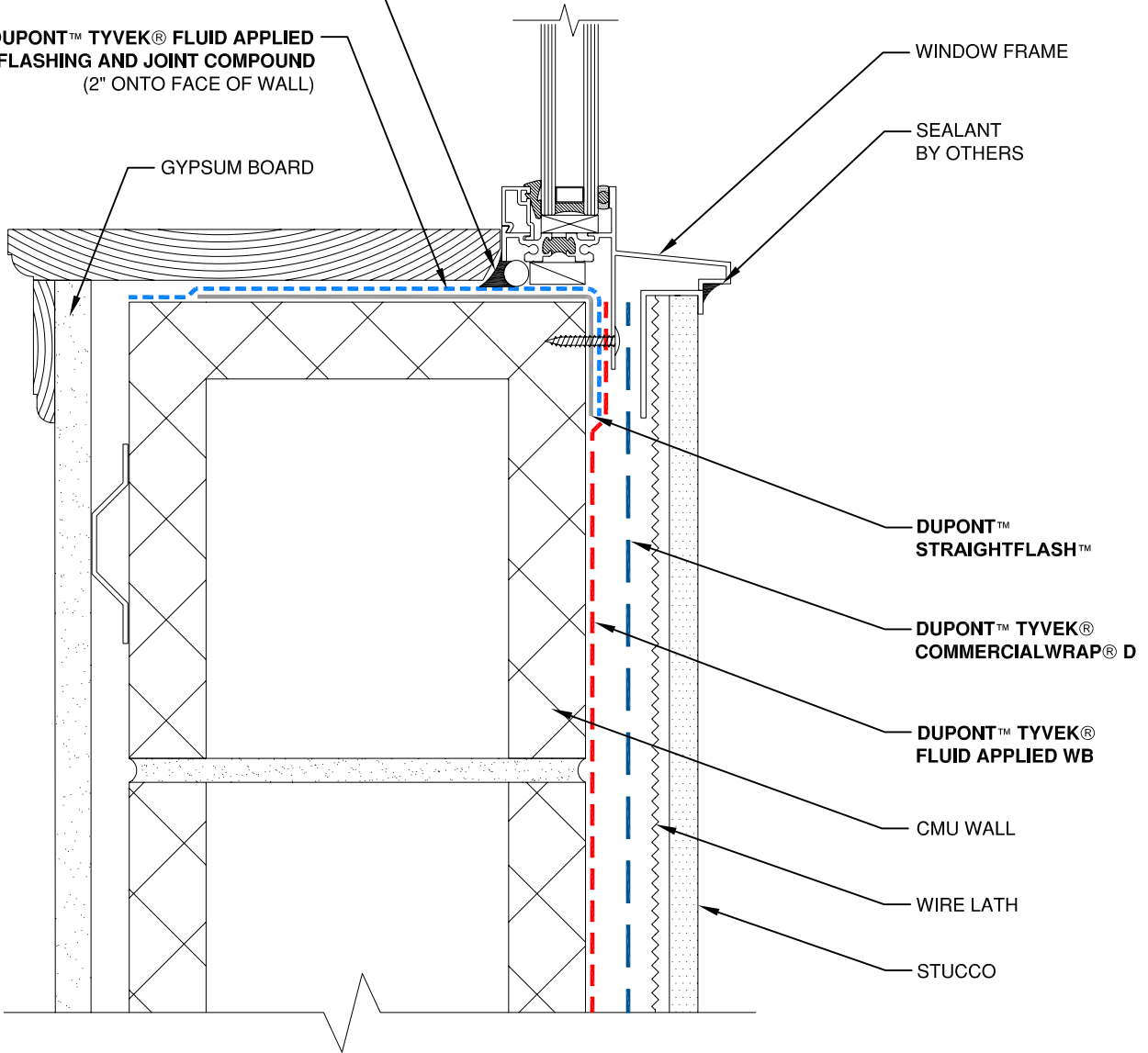
DUPONT™ SEALANT FOR TYVEK®  
FLUID APPLIED SYSTEM  
(USE BACKER ROD AS NECESSARY)

DUPONT™ TYVEK® FLUID APPLIED  
FLASHING AND JOINT COMPOUND  
(2" ONTO FACE OF WALL)

GYPSUM BOARD

WINDOW FRAME

SEALANT  
BY OTHERS



DUPONT™  
STRAIGHTFLASH™

DUPONT™ TYVEK®  
COMMERCIALWRAP® D

DUPONT™ TYVEK®  
FLUID APPLIED WB

CMU WALL

WIRE LATH

STUCCO

**NOTE**

- 1) INTERIOR VAPOR RETARDER MAY BE REQUIRED IN SOME REGIONS.
- 2) THIS INFORMATION IS PROVIDED BY DUPONT AS REFERENCE ONLY; PLEASE CONSULT LOCAL BUILDING CODES, REGULATIONS AND LAWS TO DETERMINE THE APPROPRIATE CONSTRUCTION METHODS AND MATERIALS NEEDED.

SCALE: NOT TO SCALE

REVISION DATE: 9/14/10

DRAWING: FA-S-W102s

## FLANGED WINDOW SILL - METHOD 1

STUCCO / CMU WALL / FLUID APPLIED FLASHING



**Tyvek.**  
FLUID APPLIED WB