

# DuPont™ RainVent™ Batten

To improve the ventilation and draining space behind a cladding system or 3-coat stucco system in residential construction

## SYSTEM OVERVIEW

The DuPont™ RainVent™ Batten is intended for use on stud walls with studs spaced at 16" or less and OSB or plywood sheathing.

### Battens:

The DuPont™ RainVent™ Batten is a polypropylene corrugated batten product with flow through ventilation channels installed between the control layer and the siding/stucco system. The battens are 3/8" thick, 1-5/8" wide and 8' long.

### Wall Preparation:

For proper installation of DuPont™ Tyvek® Water-Resistive Barriers (WRBs) refer to the applicable installation guidelines found on [building.dupont.com](http://building.dupont.com).

Where DuPont™ Styrofoam™ Brand Extruded Polystyrene Insulation or other exterior continuous insulation is provided on the exterior face of the OSB/plywood sheathing, a maximum of 1" thick code compliant insulation board shall be used and it shall be installed in accordance with the manufacturers recommendations. It is recommended to use DuPont™ Tyvek® DrainWrap® between foam and sheathing.

### DuPont™ RainVent™ Batten Installation:

#### Installations over 1/2" OSB or plywood intended for wood or cement cladding (Diagram 1)

- Place the battens over Tyvek® WRB at 16" on center and align with the wall studs. Secure DuPont™ RainVent™ Batten furring strips in place with 1" crown, 1-1/4" long staples at 16" on center or other approved fasteners capable of penetrating the studs by 1/2".

#### Installations over 1" insulation intended for wood or cement cladding (Diagram 2)

- Place DuPont™ Tyvek® DrainWrap™ between sheathing and foam. Place battens on foam, and install siding.

#### Installations over 1" insulation intended for stucco (Diagram 3)

- Place the DuPont™ RainVent™ Battens over Tyvek® WRB at 8" on center with every other batten aligned with the wall studs. Secure battens in place with 2" x 0.120" shank diameter galvanized roofing nails at 16" on center.
- Install a layer of DuPont™ Tyvek® HomeWrap® over the DuPont™ RainVent™ Battens and secure with staples or other approved fasteners. (This will prevent the scratch coat from blocking the drainage space created by the battens. It is not critical to secure the cover sheet to the sheathing aggressively as the lath will be secured through all layers to the sheathing).

### Siding Installation:

#### Wood or cement cladding (Diagram 1 and 2)

Wood siding or cement cladding shall be installed in accordance with the manufacturer's recommendations.

**Note** – Engineered values are based on 8" wide HardiePlank™ lap siding (ESR-2290) with 8d nails used for systems without insulation and 16d nails used for systems with insulation. All nails were installed using predrilled holes in the siding. Nails were installed at the "overlap" and spaced at 16" on center horizontally.

#### Stucco Siding (Diagram 3)

Prior to installation of stucco, a self furred expanded metal lath (2.5 lbs/yd) shall be attached to the studs using 3" long x 0.120" shank diameter galvanized roofing nails (head diameter of 0.4") at 6" on center.

3-coat stucco system shall be installed in accordance with manufacturer's recommendations and the requirements of ASTM C-926.

**Note** – Engineered values are based on a system consisting of 3 parts sand to 1 part cement and a water to cement ratio of 0.3.

## Windows and Trim

- Secure additional DuPont™ RainVent™ Batten furring strips behind corner trim, and vertical window trim.
- Attach battens one inch away from window frame for air/water channel behind trim.
- Integrate an insect screen behind the horizontal window trim pieces by attaching a 6 inch wide strip of galvanized or fiberglass insect screen along both the top and bottom length of the window.
- Secure a length of a DuPont™ RainVent™ Batten over the insect screen one inch away from the window.
- Fold the insect screen up and over the batten and staple up.
- Trim windows and doors as specified by manufacturer.

## Base of Wall

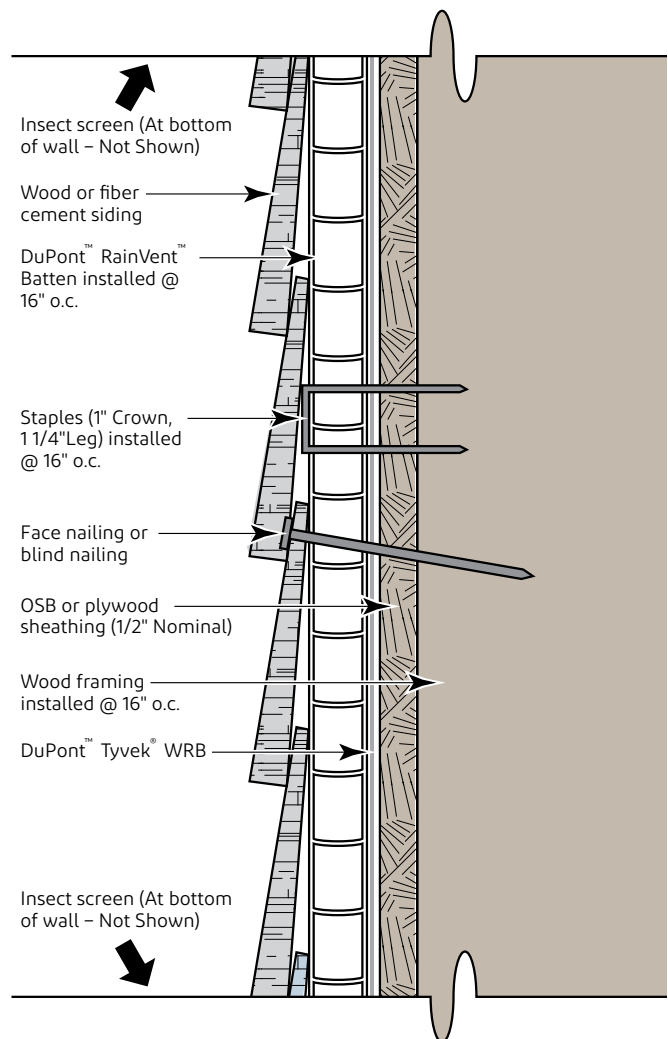
Integrate an insect screen, following manufacturer's instructions, to help prevent insects or wind-driven debris from entering the venting cavity.

- Snap a line 2-1/2 inches above the bottom edge of the siding and attach a 6 inch strip of galvanized or fiberglass insect screen.
- Secure a length of DuPont™ RainVent™ Batten to base of wall running horizontally, along the top of the line, over-laying the insect screen.
- Fold the insect screen up and over the entire base assembly and staple up.
- When applying lap siding, place a second DuPont™ RainVent™ Batten over the first.
- This second layer is a furring layer to give the siding proper slope for the bottom course.
- Siding should overlap the entire base assembly by 1/2".

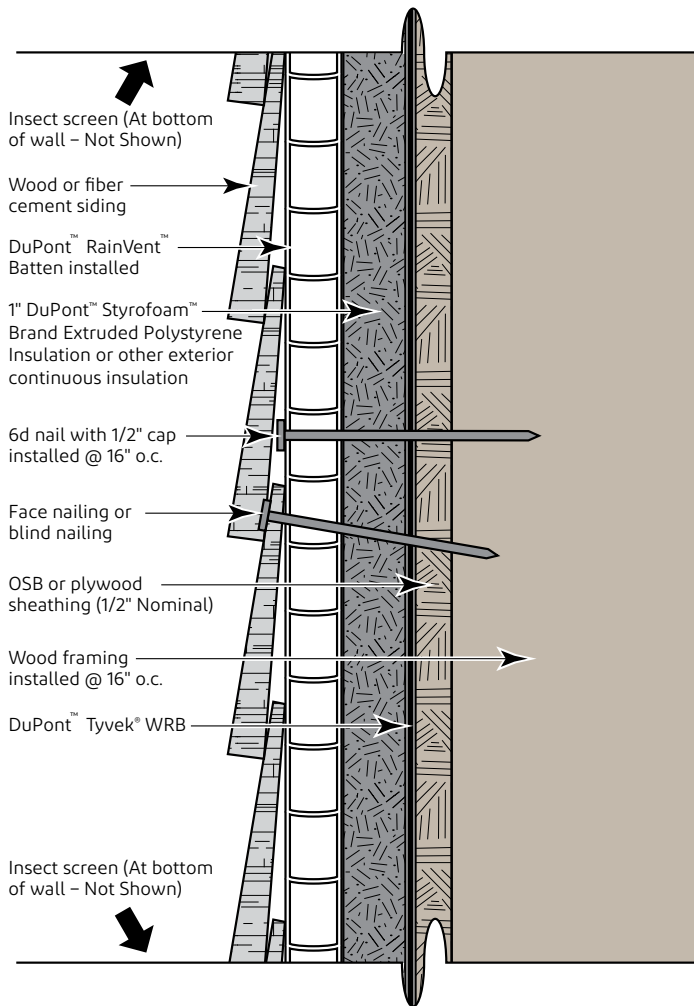
## Top of Wall

Integrate an insect screen, following manufacturer's instructions, to help prevent insects or wind-driven debris from entering the venting cavity.

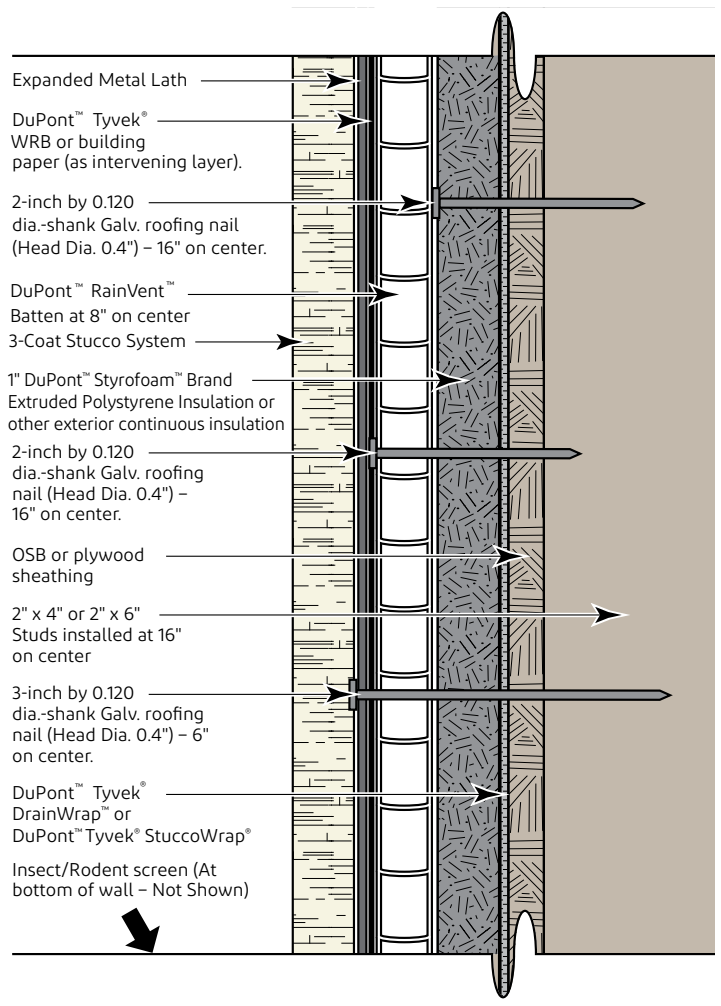
**Diagram 1: DuPont™ RainVent™ Batten with 1/2" OSB or Plywood**



**Diagram 2: DuPont™ RainVent™ Batten to 1/2" OSB or Plywood with Foam Sheathing**



**Diagram 3: DuPont™ RainVent™ Batten to 1/2" OSB or Plywood with Foam Sheathing and 3-Coat Stucco System**





**For more information visit us at  
[building.dupont.com](https://building.dupont.com)  
or call 1-833-338-7668**

**NOTICE:** No freedom from any patent owned by DuPont or others is to be inferred. Because use conditions and applicable laws may differ from one location to another and may change with time, Customer is responsible for determining whether products and the information in this document are appropriate for Customer's use and for ensuring that Customer's workplace and disposal practices are in compliance with applicable laws and other government enactments. The product shown in this literature may not be available for sale and/or available in all geographies where DuPont is represented. The claims made may not have been approved for use in all countries or regions. DuPont assumes no obligation or liability for the information in this document. References to "DuPont" or the "Company" mean the DuPont legal entity selling the products to Customer unless otherwise expressly noted. **NO EXPRESS WARRANTIES ARE GIVEN EXCEPT FOR ANY APPLICABLE WRITTEN WARRANTIES SPECIFICALLY PROVIDED BY DUPONT. ALL IMPLIED WARRANTIES INCLUDING THOSE OF MERCHANTABILITY AND FITNESS FOR A PARTICULAR PURPOSE ARE EXPRESSLY EXCLUDED.** The buyer assumes all risks as to the use of the material. Buyer's exclusive remedy or any claim (including without limitations, negligence, strict liability, or tort) shall be limited to the refund of the purchase price of the material. Failure to strictly adhere to any recommended procedures shall release DuPont Specialty Products USA, LLC or its affiliates, of all liability with respect to the materials or the use thereof.

The information herein is not intended for use by non-professional designers, applicators or other persons who do not purchase or utilize this product in the normal course of their business.

Building and/or construction practices unrelated to building materials could greatly affect moisture and the potential for mold formation. No material supplier including DuPont can give assurance that mold will not develop in any specific system.

HardiePlank® is a registered trademark of James Hardie Technology Limited.

DuPont™, the DuPont Oval Logo, and all trademarks and service marks denoted with ™, SM or ® are owned by affiliates of DuPont de Nemours, Inc. unless otherwise noted. © 2023 DuPont.