



January 2021

Graphic Signage Case Study

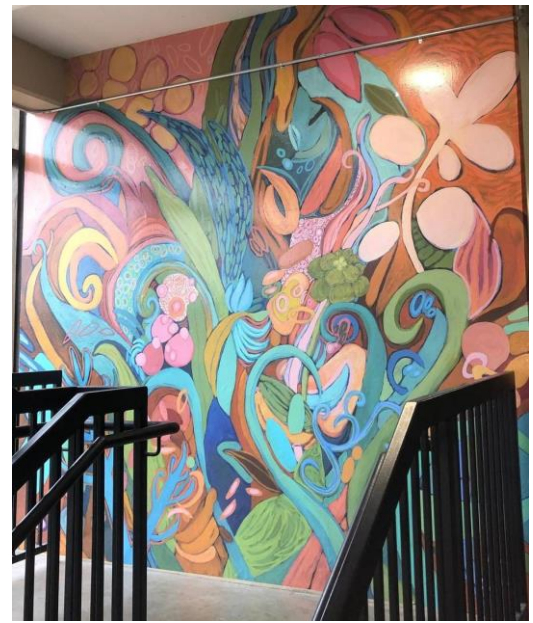
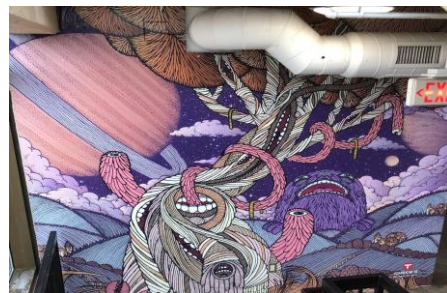
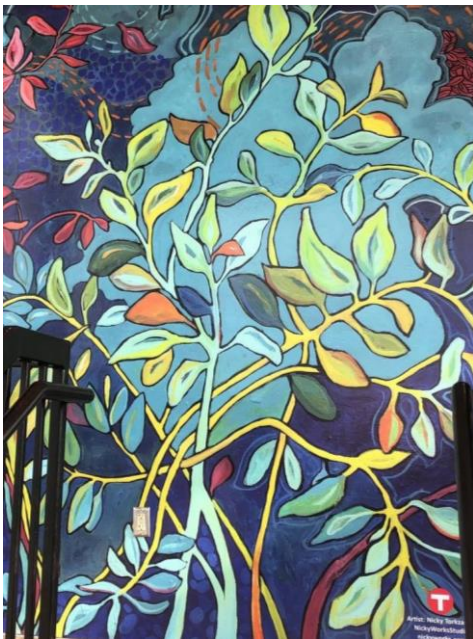


These beautiful and colorful Park-n-Ride graphics are protected by General Formulations' 285 RoughMark combined with a protective Tedlar® Laminate. This product combination is ideal because it will stick to the variable surface *and* provide graffiti protection for the artwork in an unmonitored parking structure, a win-win. And as an extra bonus, the different graphics act as colorful marker for remembering where you parked. DuPont™ Tedlar® film is an ideal surfacing material for graffiti resistance and protection against fading and corrosion, keeping decorative outdoor spaces looking newer longer.

Area of Application: Building & Construction

Year of Construction: 2020

Location: Brooklyn Park, MN



For more information visit: www.tedlar.com