



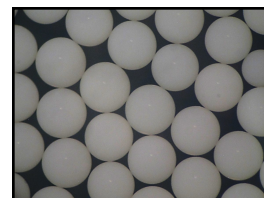
Product Data Sheet

AmberLite™ HPR900 SO₄ Ion Exchange Resin

Macroporous, Strong Base Anion Exchange Resin for Condensate Polishing for the Power Industry and Industrial Demineralization Applications

Description

AmberLite™ HPR900 SO₄ Ion Exchange Resin is specifically designed for use in condensate polishing beds at fossil-fired electric generating stations and industrial demineralization applications when a balance of operating performance, simple operation, long resin life, and cost-effective operation is required.



The macroporous structure of AmberLite™ HPR900 SO₄ provides resistance to surface fouling as well as physical, osmotic, and oxidative stresses, which allows increased resin lifetime in operation. The resin can operate reliably under the high flowrate and pressure drop conditions that are typically used in condensate polishers.

This resin is designed to be used in combination with AmberLite™ HPR252 H Ion Exchange Resin and AmberLite™ 600i Inert Resin in TRIOBED™ Condensate Polishers, providing an optimized balance of stability, operating capacity, low pressure drop, and regeneration efficiency.

When high water quality and long runtime are needed, AmberLite™ HPR1300 H Ion Exchange Resin is a trusted choice.

When compliance with the China National Standard specifications for fossil power condensate polishing applications, including the China Strong Osmotic Ball Mill test, is important, AmberLite™ HPR2800 H Ion Exchange Resin is the recommended cation pair since both resins are compliant with the standard.

Resin Pairings

Recommended pairing:

- AmberLite™ HPR252 H Ion Exchange Resin (macroporous)
- AmberLite™ HPR1300 H Ion Exchange Resin (gel)
- AmberLite™ HPR2800 H Ion Exchange Resin (macroporous)

Applications

- Mixed bed condensate polishing in fossil power plants
- Mixed bed polishing in industrial demineralization
- Systems requiring exceptionally high osmotic stability

Historical Reference

AmberLite™ HPR900 SO₄ Ion Exchange Resin has previously been sold as AmberSep™ 900 SO₄ Ion Exchange Resin.

Typical Properties

| Physical Properties | |
|-------------------------------|--|
| Copolymer | Styrene-divinylbenzene |
| Matrix | Macroporous |
| Type | Strong base anion |
| Functional Group | Trimethylammonium |
| Physical Form | White, opaque, spherical beads |
| Chemical Properties | |
| Ionic Form as Shipped | SO ₄ ²⁻ |
| Total Exchange Capacity | ≥ 1.0 eq/L (Cl ⁻ form) |
| Water Retention Capacity | 60.0 – 68.0% (Cl ⁻ form) |
| Particle Size [§] | |
| Particle Diameter | 500 – 700 μm |
| Uniformity Coefficient | ≤ 1.45 |
| < 300 μm | ≤ 0.5% |
| > 1180 μm | ≤ 1.0% |
| Stability | |
| Whole Uncracked Beads | ≥ 95% |
| Strong Osmotic Ball Mill Test | ≥ 92% |
| Swelling | Cl ⁻ → OH ⁻ ≤ 25% SO ₄ ²⁻ → OH ⁻ ≤ 15% |
| Density | |
| Particle Density | 1.09 g/mL |
| Shipping Weight | 695 g/L |

[§] For additional particle size information, please refer to the [Particle Size Distribution Cross Reference Chart](#) (Form No. 45-D00954-en).

Suggested Operating Conditions

| | |
|---|------------------------|
| Temperature Range (OH ⁻ form) [‡] | 5 – 100°C (41 – 212°F) |
| pH Range (Stable) | 0 – 14 |

[‡] Operating at elevated temperatures, for example above 60 – 70°C (140 – 158°F), may impact the purity of the loop and resin life. Contact our technical representative for details.

For additional information regarding recommended minimum bed depth, operating conditions, and regeneration conditions for [mixed beds](#) (Form No. 45-D01127-en) or [separate beds](#) (Form No. 45-D01131-en) in water treatment, please refer to our Tech Facts.

Hydraulic Characteristics

Estimated bed expansion of AmberLite™ HPR900 SO₄ Ion Exchange Resin as a function of backwash flowrate and temperature is shown in Figure 1.

Estimated pressure drop for AmberLite™ HPR900 SO₄ as a function of service flowrate and temperature is shown in Figure 2. These pressure drop expectations are valid at the start of the service run with clean water and a well-classified bed.

Figure 1: Backwash Expansion
Temperature = 10 – 60°C (50 – 140°F)

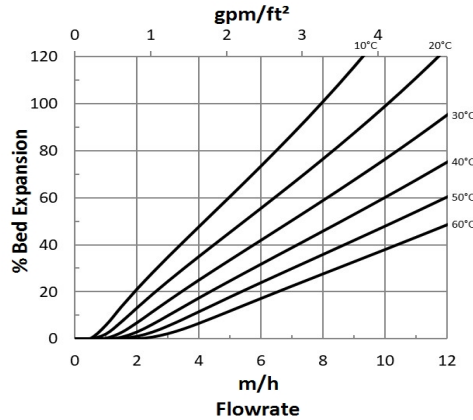
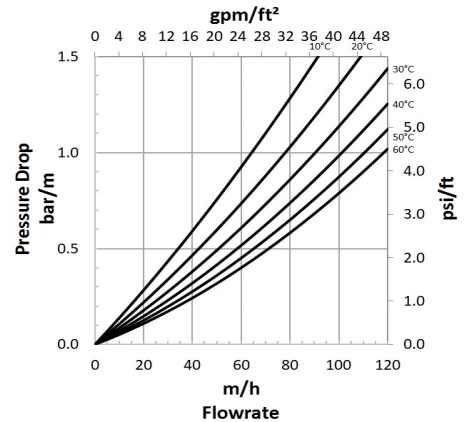


Figure 2: Pressure Drop
Temperature = 10 – 60°C (50 – 140°F)



Product Stewardship

DuPont has a fundamental concern for all who make, distribute, and use its products, and for the environment in which we live. This concern is the basis for our product stewardship philosophy by which we assess the safety, health, and environmental information on our products and then take appropriate steps to protect employee and public health and our environment. The success of our product stewardship program rests with each and every individual involved with DuPont products—from the initial concept and research, to manufacture, use, sale, disposal, and recycle of each product.

Customer Notice

DuPont strongly encourages its customers to review both their manufacturing processes and their applications of DuPont products from the standpoint of human health and environmental quality to ensure that DuPont products are not used in ways for which they are not intended or tested. DuPont personnel are available to answer your questions and to provide reasonable technical support. DuPont product literature, including safety data sheets, should be consulted prior to use of DuPont products. Current safety data sheets are available from DuPont.

Please be aware of the following:

- **WARNING:** Oxidizing agents such as nitric acid attack organic ion exchange resins under certain conditions. This could lead to anything from slight resin degradation to a violent exothermic reaction (explosion). Before using strong oxidizing agents, consult sources knowledgeable in handling such materials.

Have a question? Contact us at:

www.dupont.com/water/contact-us

All information set forth herein is for informational purposes only. This information is general information and may differ from that based on actual conditions. Customer is responsible for determining whether products and the information in this document are appropriate for Customer's use and for ensuring that Customer's workplace and disposal practices are in compliance with applicable laws and other government enactments. The product shown in this literature may not be available for sale and/or available in all geographies where DuPont is represented. The claims made may not have been approved for use in all countries. Please note that physical properties may vary depending on certain conditions and while operating conditions stated in this document are intended to lengthen product lifespan and/or improve product performance, it will ultimately depend on actual circumstances and is in no event a guarantee of achieving any specific results. DuPont assumes no obligation or liability for the information in this document. References to "DuPont" or the "Company" mean the DuPont legal entity selling the products to Customer unless otherwise expressly noted. NO WARRANTIES ARE GIVEN; ALL IMPLIED WARRANTIES OF MERCHANTABILITY OR FITNESS FOR A PARTICULAR PURPOSE ARE EXPRESSLY EXCLUDED. No freedom from infringement of any patent or trademark owned by DuPont or others is to be inferred.

© 2019 DuPont. DuPont™, the DuPont Oval Logo, and all trademarks and service marks denoted with ™, ℠ or ® are owned by affiliates of DuPont de Nemours Inc., unless otherwise noted.

