

DuPont™ Cyrel® EVO 2000 ECLF

Exposure & Light Finisher

[DuPont Advanced Printing](#) continues to be a global technology leader in the development and supply of flexographic printing systems. Our R&D team continues to develop innovative new solutions to help our customers expand their business by taking advantage of new and profitable opportunities in the growing flexographic packaging market. The DuPont Packaging Graphics portfolio of products includes DuPont™ Cyrel® brand photopolymer plates ([analogue and digital](#)), [Cyrel® platemaking equipment](#), [Cyrel® round sleeves](#), Cyrel® plate mounting systems and the revolutionary [Cyrel® FAST thermal system](#).

DuPont™ Cyrel® Systems: Higher quality at high speed.

The DuPont™ Cyrel® EVO 2000 ECLF is designed with customer needs in mind; it is easy to install, support, maintain and operate. It is robust, extremely cost effective and reliable.

DuPont™ Cyrel® EVO 2000 ECLF

Exposure Light Finisher Section

- Maximum plate size 1,200 x 1,600 mm (47" x 63")
- Clamshell design with automatic pneumatic lid that contains integral safety switches
- Light integration system, which automatically compensates for any UV output variations
- New lamps air cooling system with temperature control
- Optical fibers lamp control
- Newly designed control display for optional installation on right or left side of the unit
- Lamp pre-heating function
- Userfriendly back exposure test function

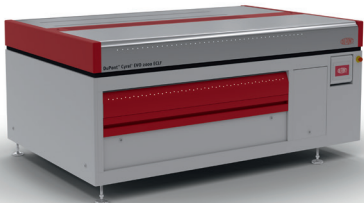
Product Features

DuPont™ Cyrel® EVO 2000 ECLF exposes, post-exposes and finishes high quality photopolymer plates up to a maximum format of 1,200 x 1,600 mm (47" x 63").

The exposure section is a clamshell design holding 42 UV-A fluorescent tubes with built-in reflectors. One yellow control tube illuminates the exposure bed for inspection of the plate surface. The unit is fitted with a light integrator that compensates for the decrease in light output as the tubes age.

To meet the demanding needs of high quality plates, the user can easily customise the 24 basic exposure set-ups.

Each fluorescent tube is constantly monitored by a light guide, giving the operator a visual on/off indication. There are three-time counters imbedded in the touch screen control panel to keep track of the number of hours the UV-A and UV-C tubes have been in operation.



DuPont™ Cyrel® EVO 2000 ECLF

DuPont™ Cyrel® EVO 2000 ECLF

Exposure & Light Finisher

The Main Exposure holds 42 UV-A tubes and the Light Finisher section holds 24 UV-A and 23 UV-C tubes. The control panel allows the user to perform post exposure and finishing in a preferred sequence, or simultaneously. The post exposure and finisher section has 25 basic set-ups that can be easily customized.

Technical Data		
General	Details	Other Notes
Equipment Name	DuPont™ Cyrel® EVO 2000 ECLF	Cooled bed exposure unit with light finisher
SAP Article Number	D15467274	
Plate Thickness	up to 7.0 mm	up to 0.276 inch
Max. Nominal Plate Width	1,200 mm (47")	
Max. Nominal Plate Length	1,600 mm (63")	
UV-A Tubes Wave Length	360 nm – 380 nm	42 tubes (exposure) GMC M300506001 CY CNS LAMP, UVA, 80 W, 1.5 M 24 tubes (LF) GMC M300506001 CY CNS LAMP, UVA, 80 W, 1.5 M
UV-C Tubes Wave Length	254 nm	23 tubes, GMC D12374309 CY CNS LAMP, UVC, 60-95W, 1.5 M
Electrical (Field Configurable)	400 Volt – 50/60 Hz 230 Volt – 50/60 Hz	3PH/N/PE 9.5kW 15A 3PH/PE 9.5kW 25A
Power (Nominal)	9.5 kW	
Current (Nominal Load)	15 Amp @ 400 Volt; 25 Amp @ 230 Volt	
Connecting Wires	400 Volt configuration; 230 Volt configuration	5G6
Grounding	< 0.1 Ω	Ground bar to equipment frame and to electrical supply ground
Exhaust (Light Finisher)	1 x 160 mm	1000 m³/h
Environmental Data	Temperature range: 17°C to 28°C (63°F to 82°F)	Relative humidity from 10% to 80% non-condensing
Compressed Air Supply	Min. 7 bar	
Dimensions:	Uncrated:	Crated:
D	2,640 mm (103.9")	2,930 mm (115.4")
W	1,740 mm (68.9")	1,930 mm (76.0")
H	1,060 mm (45.7")	1,590 mm (62.6")
H (open)	2,450 mm (96.5")	
Weight	1,120 kg (2,840 lbs)	Crated: 1,400 kg (3,087 lbs)
Colour	DuPont Grey & DuPont Red	

www.cyrel.eu

For more information on DuPont™ Cyrel® or other DuPont Advanced Printing products, please contact your local representative.

DuPont de Nemours (Deutschland) GmbH

Tel: +49 (0) 6102 18 1592

DuPont (U.K.) Limited

Tel: +44 (0) 1438 734000