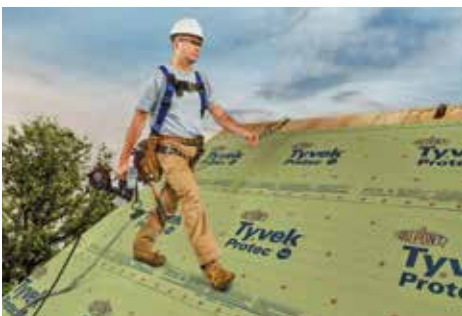




Tyvek.

# TYVEK<sup>®</sup> PROTEC<sup>™</sup> 160 ROOFING UNDERLAYMENT



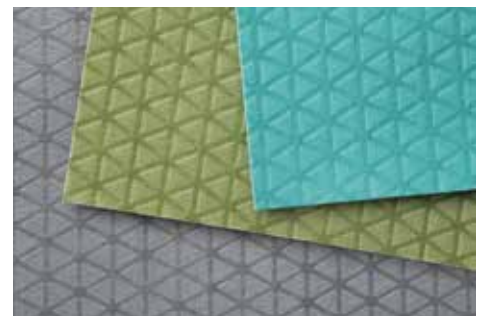
## INDUSTRY-LEADING WALKABILITY

The unique embossed pattern allows for better traction and grip while walking on the roof.



## TRUSTED QUALITY AND DURABILITY

Another innovative material breakthrough from DuPont™ Tyvek®, the leader in building envelope systems.



## A FAMILY OF UNDERLAYMENTS





Our portfolio of roofing underlayments provides choices to better meet your needs.

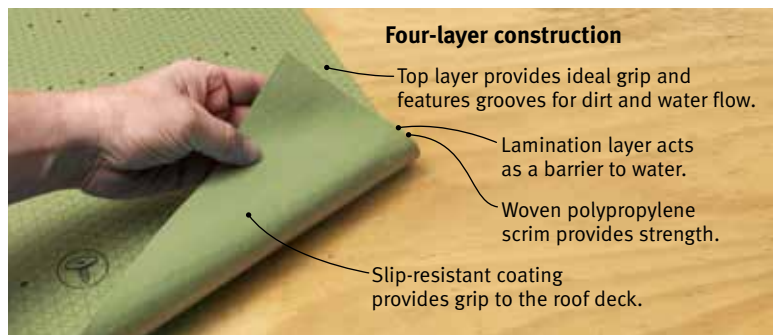




**Industry-leading walkability in dry, wet, hot, cold and dirty conditions.**

Tyvek® Protec™ 160 is an engineered synthetic roofing underlayment with industry-leading walkability from DuPont, the trusted name in total building envelope solutions. Ideal for slopes 2:12 or higher under a variety of roofing materials in repair, re-roofing and new construction.

|   |               |   |
|---|---------------|---|
| <b>Tyvek® Protec™</b>   |               |  |
| <b>Walkability</b>  | Best in Class |   |
| <b>Roll Size (10 square)</b>  | 48" x 250'    |   |
| <b>Rolls Per Pallet</b>   | 36            |   |
| <b>Roll Weight</b>  | 31 lbs        |   |
| <b>Warranty</b>   | 40 years      |   |
| <b>UV Exposure</b>  | 6 months      |   |
| <b>Roof Types</b>   |               |   |
| Asphalt Shingle   | ✓             |   |
| Cedar Shingle   | ✓             |   |
| Metal   | ✓             |   |
| Tile  | ✓             |   |
| Slate   | ✓             |   |
| <b>Recyclable</b>   | ✓             |   |
|  <b>ASTM D226 Types I &amp; II</b> | ✓             |   |
|  <b>ICC-ES AC188</b>               | ✓             |   |
|  <b>Class A Per ASTM E108</b>      | ✓             |   |



**Easy to chalk**  
Accepts and holds chalk marks for more visible lines and a better finished product.



**Wrinkle-free**  
Lays flat and stays flat for a more uniform shingled surface.



**Protects the roof**  
Preserves the roof deck during installation and provides an effective secondary moisture barrier.



**Supported by the DuPont™ Tyvek® Specialist Network**  
Specialists are available across the U.S. and Canada for additional knowledge and support.



[tyvek.com/protec](http://tyvek.com/protec) 1-800-44-TYVEK

Industry-leading walkability when compared to other low permeability synthetic roofing underlayments.

Copyright © 2016 DuPont. All rights reserved. The DuPont Oval Logo, DuPont™, For Greater Good®, Tyvek® and Tyvek® Protec™ are trademarks or registered trademarks of E.I. du Pont de Nemours and Company or its affiliates. K-29379 (07/16)

