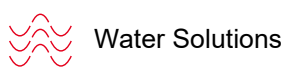


DuPont™ IntegraTec™ XP 55 UXA Modules **Assembly Manual**

Version 2
September 2025



NOTICE: Any translations of this document into languages other than English provided to you by DuPont are not official translations and are intended solely as a convenience for non-English reading recipients. The only DuPont-approved and valid version of this document is the most current English version provided by DuPont at the time of sale.

Table of Contents

1. Legal Notice	3
1.1 Product	3
1.2 Change Policy	3
2. About these Instructions	4
2.1 Objective of these Instructions	4
3. Tools and Equipment	5
4. End Cap Assembly	6
4.1 Lift up module	6
4.2 Place liquid holder.....	6
4.3 Discharge storage solution	6
4.4 Prepare End Caps.....	7
4.5 Install Filtrate End Cap	7
4.6 Install Feed End Cap	8
5. Install Module to Skid.....	9
5.1 Pre-install feed and filtrate connector to the opening of skid	9
5.2 Connect Module to Skid.....	9
5.3 Fix module to skid properly to prevent falling off	9
5.4 Connect Feed Filtrate and Concentrate Openings	9
5.5 Repeat Installation for remained modules.....	10

List of Figures

Figure 1 Tools and Equipment	5
Figure 1 Liquid collection basin beneath the module ends	6
Figure 3 Empty storage solution.....	7
Figure 4 Description of End Cap Accessory.....	7
Figure 5. Filtrate Clamp Orientation.....	8
Figure 6. Feed Clamp Orientation	8
Figure 7. DuPont™ IntegraTec™ XP 55 UXA - End Cap Assembly Type I Installation Drawing.....	11
Figure 8. DuPont™ IntegraTec™ XP 55 UXA - End Cap Assembly Type II Installation Drawing.....	12
Figure 9. DuPont™ IntegraTec™ XP 55 UXA - End Cap Assembly Type III Installation Drawing.....	13
Figure 10. DuPont™ IntegraTec™ XP 55 UXA - End Cap Assembly Type IV Installation Drawing	14

1. Legal Notice

1.1 Product

This manual applies to DuPont™ IntegraTec™ XP 55 UXA Modules for Open Platforms, parts and components for installation, assembly and disassembly.

Duplication and archiving in any form whatsoever – including of excerpts – is only permitted with the written consent of the manufacturer.

All brand and company names in these process and design guidelines are registered trademarks of the corresponding companies.


1.2 Change Policy

The manufacturer reserves the right to change this manual or any part thereof at any time in the interest of continuous product improvement.

The company/party responsible for process and design of the system described in this manual should obtain the current DuPont™ IntegraTec™ XP 55 UXA Modules for Open Platforms Assembly Manual at regular intervals:

- Download at: <https://www.dupont.com/brands/integrattec-ultrafiltration.html>


2. About these Instructions

<i>NOTE</i>	
	<p>READ THE INSTRUCTIONS!</p> <p>Read these instructions completely before assembling and disassembling the equipment. The information contained herein will help you perform the work properly.</p> <p>It is important to follow the safety instructions to prevent injury and property damage.</p> <p>Keep these instructions in a readily accessible place close to the DuPont™ IntegraTec™ XP 55 UXA Modules. Include these instructions if you pass the DuPont™ IntegraTec™ XP 55 UXA Modules on to a third-party.</p>

2.1 Objective of these Instructions

- These instructions will enable you to properly, safely and quickly assemble and disassemble a DuPont™ IntegraTec™ XP 55 UXA Modules.
- These instructions contain additional important information on maintaining the DuPont™ IntegraTec™ XP 55 UXA Modules.
- The order in which these instructions are presented is designed for optimal learning, enabling you to work your way into the subject matter step by step.

Warranty Policy

<i>NOTE</i>	
	<p>ADHERENCE TO ALL INSTRUCTIONS!</p> <p>Full and proper compliance with the Assembly Instructions is a prerequisite for making a claim under the warranty.</p> <p>Any translations of this document into languages other than English provided to you by DuPont are not official translations and are intended solely as a convenience for non-English reading recipients. The only DuPont-approved and valid version of this document is the most current English version provided by DuPont at the time of sale.</p> <p>In the event of making a warranty claim, the customer agrees to automatically provide DuPont with a complete set of documentation.</p> <p>Please contact DuPont if you wish to deviate from any of the guidelines or specifications provided in this document and request written approval in advance. Otherwise, you risk invalidating any warranty claims that you may make in the future.</p>

3. Tools and Equipment

Prepare following tools and equipment before module assembly and installation, Figure 1.

- Safety Goggle;
- Glove;
- Latex glove;
- Scissors;
- Screw driver
- Liquid collection basin;
- Shelf or platform for module placing;



Figure 1 Tools and Equipment

4. End Cap Assembly

4.1 Lift up module

Open cardboard box, lift module out of it and place on the platform or shelf, keep two ends of module above the ground.

4.2 Place liquid holder

Place two liquid collection basin beneath the module ends, Figure 2.



Figure 2 Liquid collection basin beneath the module ends

Cautions:

- Each non-anti-freezing module (GMID 12091655, 12091656) contains 4 L storage solution, the major ingredients of the liquid are 1.3% Sodium Metabisulfite, 2.5% Sodium Citric, with the pH at 4-5, CODCr at around 26,000mg/L. Each anti-freezing module (GMID 12091659, 12091658) contains 23L storage solution, the major ingredients of the liquid are 1.2% Sodium Metabisulfite, 2.5% Sodium Citric and 60% glycerin, with the pH at 4-5, CODCr at around 730,000mg/L. Please choose liquid collection basin with proper volume.
- Please dispose the storage solution in compliance with local regulation.

4.3 Discharge storage solution

Dismount module shipping plugs (6, please refer to attachments for all the parts name and number mentioned in this document) at two ends, and the concentrate plug (10). Remove X-rings (7) and concentrate seal (9), keep them clean and restore for use. Gradually lift up module at filtrate end, keep the module at the inclined angel (<30 degree) and empty the storage solution from feed opening.

Cautions:

- Always keep the X-rings and seals clean, prevent them from dust and particle contamination.

- Wear safety goggles and latex gloves before opening end caps, be careful of the liquid when dismantling the blind plates and concentrate plug. If storage solution splashes to the operators' hands and skid, please rinse with water immediately.
- Do not lift module too much to sliding it off the shelf or platform.



Figure 3 Empty storage solution

4.4 Prepare End Caps

Take out two end caps from the end cap package.

The DuPont™ IntegraTec™ XP 55 UXA Module is accommodated with three different end caps accessory, please confirm the actual end cap type used at site and refer to the following assembly procedures accordingly.

	End Cap Assembly Type I	End Cap Assembly Type II	End Cap Assembly Type III	End Cap Assembly Type IV
				
GMID	12099259	12099258	12099245	12101031

Figure 4 Description of End Cap Accessory

4.5 Install Filtrate End Cap

Install X-ring (7) to the filtrate end, then assemble the top end cap A or B (whichever appropriate) to it, install head clamp pairs (4), fasten spacer pairs (5), nuts M10 (2), Double-Threaded Bolts (3), screw nuts tightly at the torque of 30N*m, Figure 5.

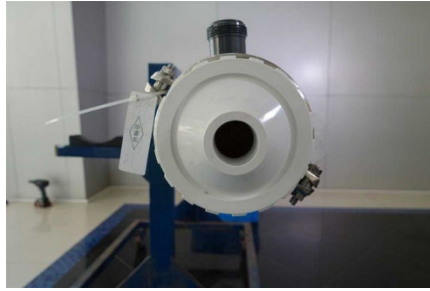


Figure 5. Filtrate Clamp Orientation

Cautions:

Do not mistaken the filtrate end and ensure X-ring installed in position.

Request the latest exploded drawing from your DuPont contact:

- DuPont™ IntegraTec™ XP 55 UXA - End Cap Assembly Type I Technical Drawing (Form No 45-D02586-en)
- DuPont™ IntegraTec™ XP 55 UXA - End Cap Assembly Type II Technical Drawing (Form No 45-D02587-en)
- DuPont™ IntegraTec™ XP 55 UXA - End Cap Assembly Type III Technical Drawing (Form No 45-D02588-en)
- DuPont™ IntegraTec™ XP 55 UXA - End Cap Assembly Type IV Technical Drawing (Form No 45-D02589-en)

4.6 Install Feed End Cap

Install X-ring (7) to the feed end, then assemble the bottom end cap A or B (whichever appropriate) to it, install head clamp pairs (4), fasten spacer pairs (5), nuts M10 (2), Double-Threaded Bolts (3), screw nuts tightly at the torque of 30N•m, refer to [Feed Clamp Orientation](#).



Figure 6. Feed Clamp Orientation

Cautions:

Do not mistaken the filtrate end and ensure X-ring installed in position.

Request the latest exploded drawing from your DuPont contact:

- DuPont™ IntegraTec™ XP 55 UXA - End Cap Assembly Type I Technical Drawing (Form No 45-D02586-en)
- DuPont™ IntegraTec™ XP 55 UXA - End Cap Assembly Type II Technical Drawing (Form No 45-D02587-en)
- DuPont™ IntegraTec™ XP 55 UXA - End Cap Assembly Type III Technical Drawing (Form No 45-D02588-en)
- DuPont™ IntegraTec™ XP 55 UXA - End Cap Assembly Type IV Technical Drawing (Form No 45-D02589-en)

5. Install Module to Skid

5.1 Pre-install feed and filtrate connector to the opening of skid

End cap assembly I Module: refer to Figure 7. DuPont™ IntegraTec™ XP 55 UXA - End Cap Assembly Type I Installation Drawing, install two compressions coupling 2"(13) to the feed and filtrate opening of skid.

End cap assembly II Module: refer to Figure 8. DuPont™ IntegraTec™ XP 55 UXA - End Cap Assembly Type II Installation Drawing, install silicon gasket (17, please refer to attachment 2) and compression coupling 2"(13) to feed and filtrate opening of skid respectively.

End cap assembly III Module: refer to Figure 9. DuPont™ IntegraTec™ XP 55 UXA - End Cap Assembly Type III Installation Drawing, install gasket of Victaulic Coupling 2" (17, please refer to attachment 3) and compression coupling 2"(13) to feed and filtrate opening of skid respectively.

End cap assembly IV Module: refer to Figure 10. DuPont™ IntegraTec™ XP 55 UXA - End Cap Assembly Type IV Installation Drawing, install two gaskets of Victaulic Coupling 2" (17, please refer to attachment 4) to feed and filtrate opening of skid respectively.

5.2 Connect Module to Skid

Lift up module to the skid, align module feed opening (Opening 3) to feed opening of skid, then align module concentrate opening (opening 2) to concentrate opening of skid. If flexible tube is employed for the skid concentrate line, then only need to move module concentrate opening to the same orientation of the flexible tube.

5.3 Fix module to skid properly to prevent falling off

Cautions:

- For End Cap Assembly I module, bind module body with the closest skid frame properly.

5.4 Connect Feed Filtrate and Concentrate Openings

End cap assembly I Module: refer to Figure 7. DuPont™ IntegraTec™ XP 55 UXA - End Cap Assembly Type I Installation Drawing. Move up compression coupling 2"(13) to the feed cap of the module (Opening 3) and tighten the coupling properly. Move down compression coupling 2"(13) to the filtrate cap of the module (Opening 1) and tighten the coupling properly. Install concentrate seal (9) to the concentrate opening of module (Opening 2), connect module concentrate opening and skid concentrate opening and tighten the concentrate nut (11) properly.

End cap assembly II Module: refer to Figure 8. DuPont™ IntegraTec™ XP 55 UXA - End Cap Assembly Type II Installation Drawing. Tighten Silicon Clamp (18, please refer to attachment 2) manually. Move down compression coupling 2"(13) to the filtrate cap of the module (Opening 1) and tighten the coupling properly. Install concentrate seal (9) to the concentrate opening of module (Opening 2), connect module concentrate opening and skid concentrate opening and tighten the concentrate nut (11) properly.

End cap assembly III Module: refer to Figure 9. DuPont™ IntegraTec™ XP 55 UXA - End Cap Assembly Type III Installation Drawing. Move up gasket of coupling 2"(17, please refer to attachment 3) to the feed cap of the module (Opening 3) and tighten the coupling properly.

Move down compression coupling 2"(13) to the filtrate cap of the module (Opening 1) and tighten the coupling properly. Install concentrate seal (9) to the concentrate opening of module (Opening 2), connect module concentrate opening and skid concentrate opening and tighten the concentrate nut (11) properly.

End cap assembly IV Module: refer to Figure 10. Move up gasket of coupling 2"(17, please refer to attachment 4) to the feed cap of the module (Opening 3) and tighten the coupling properly. Then install the 2" coupling to the filtrate port (Opening 1) following the similar way as the feed port.

5.5 Repeat Installation for remained modules

Repeat 2.1 to 3.4 until all modules be installed and fixed, rinse UF system with the guidance of the Ultrafiltration user manual.

DU PONT
Ultrafiltration
FILE NAME: XP-55-UXA-01

Installation Instructions:

- Drain preservative from modules.
At Opening 1 and 3, replace Module Shipping Plug(6) with Top End Cap A(1) to both End Caps.
At Opening 2, remove Concentrate Plug (10) and install Concentrate Union Socket (12). All the removed Module Shipping Plugs and Concentrate Seals need to be retained for future use.
- Install the Module on Skid Frame.
- At Opening 1 and 3, use Compression Coupling 2"(13) to connect Top End Cap A (1) to the filtrate / feed pipeline of site.
- At Opening 2, use 90°Elbow 1.5" +Pipe (15) and Compression Coupling 1.5" (14) to connect Concentrate Union Socket (12) to the Concentrate pipeline of site.

Notes:

- UF Module should be kept preserved, as shipped from factory, until ready for operation. If leakage occurs, refer to DuPont Ultrafiltration Technical Manual for procedure to replace preservative.
- Upstream process pipework should be thoroughly flushed prior to installation and commissioning.
- Preservative consists primarily of Sodium Metabisulfite (about 1% solution).
- All pipes, which connect with skid, should be firmly supported and fixed, make sure these pipes will not influence the stability of the skid when operating.

No.	Part No.	Name& Specification	Remarks
1	99090521	Compression coupling 2"(13)	Optional Accessories
2	99090520	Compression coupling 1.5"(14)	Optional Accessories
3		90°Elbow1.5" + Pipe(15)	Customer Scope

TECHNOLOGY PROVIDER: DU PONT Water Solutions		PROJECT TITLE: IntegraTec™XP 55 UXA END CAP TYPE I	
SCALE: N T S		DRAWING TITLE: DuPont™ IntegraTec™ XP 55 UXA - End Cap Assembly Type I Installation Drawing	
APPROVED BY:	B.He		
CHECKED BY:	R. Chen		
DESIGNED BY:	CC. Gao		
DRAWN BY:	CC. Gao		
DRAWING NO.:	XP-55-UXA-01	REV	APPRD. BY
		DATE	DESCRIPTION

Figure 7. DuPont™ IntegraTec™ XP 55 UXA - End Cap Assembly Type I Installation Drawing

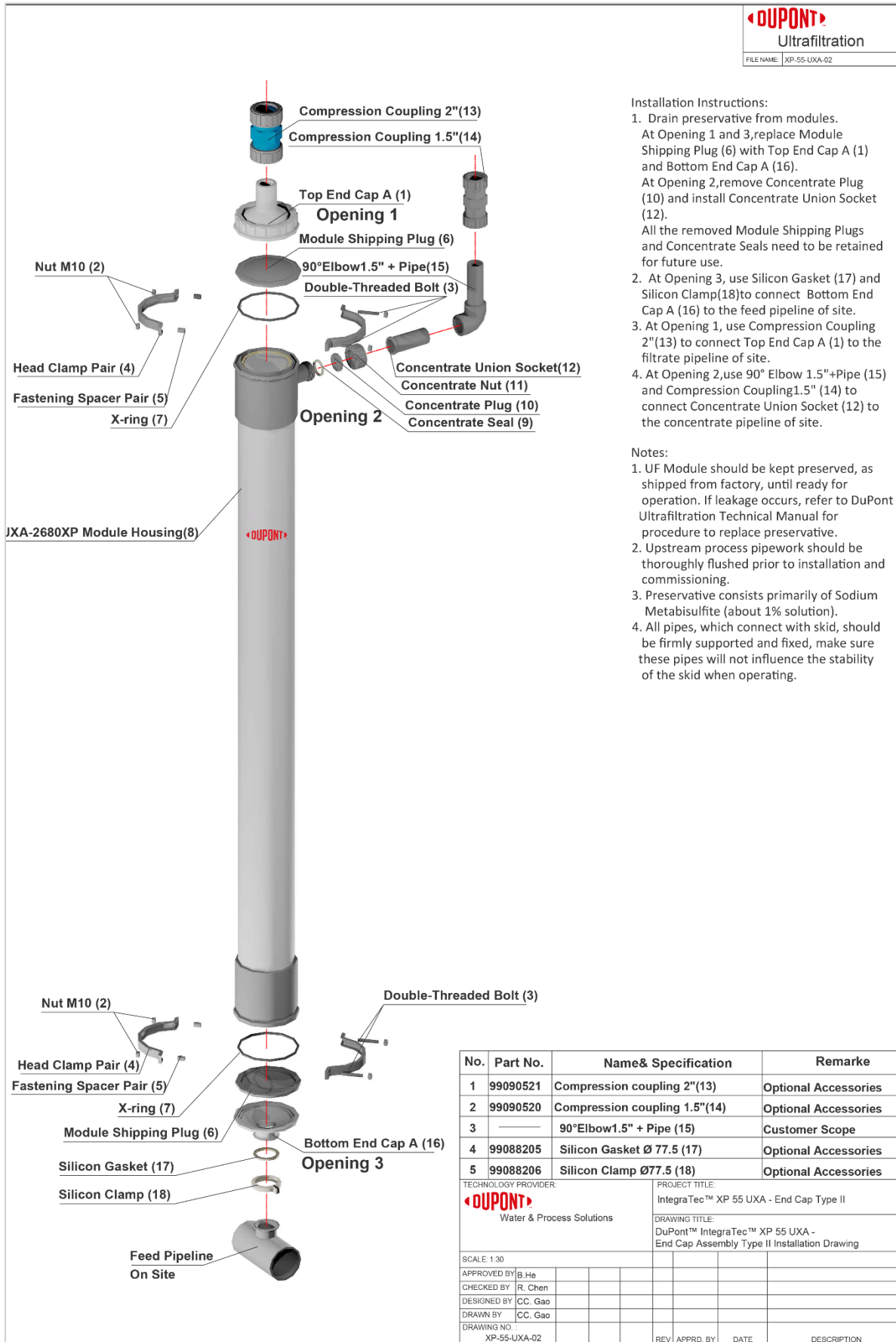


Figure 8. DuPont™ IntegraTec™ XP 55 UXA - End Cap Assembly Type II Installation Drawing

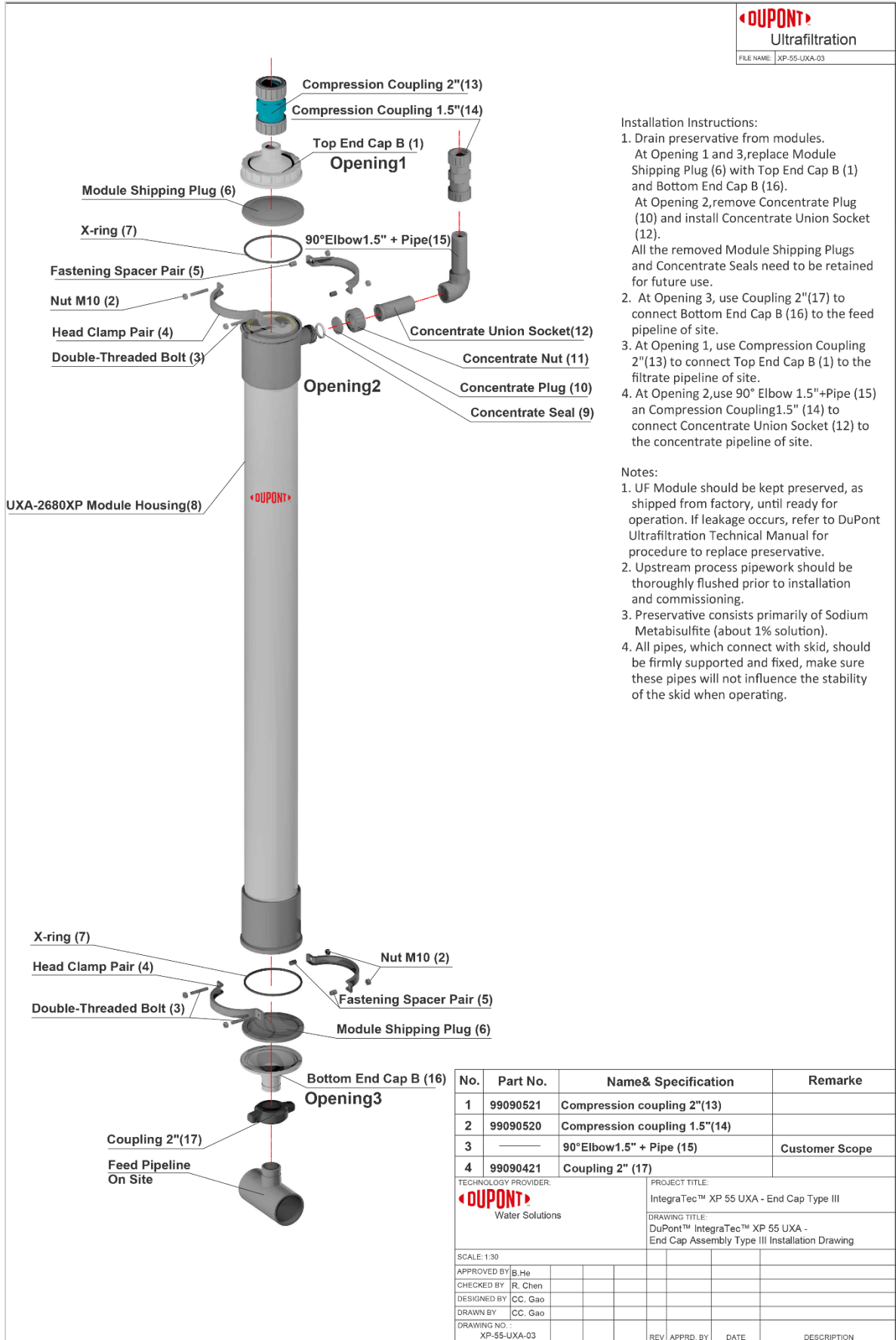


Figure 9. DuPont™ IntegraTec™ XP 55 UXA - End Cap Assembly Type III Installation Drawing

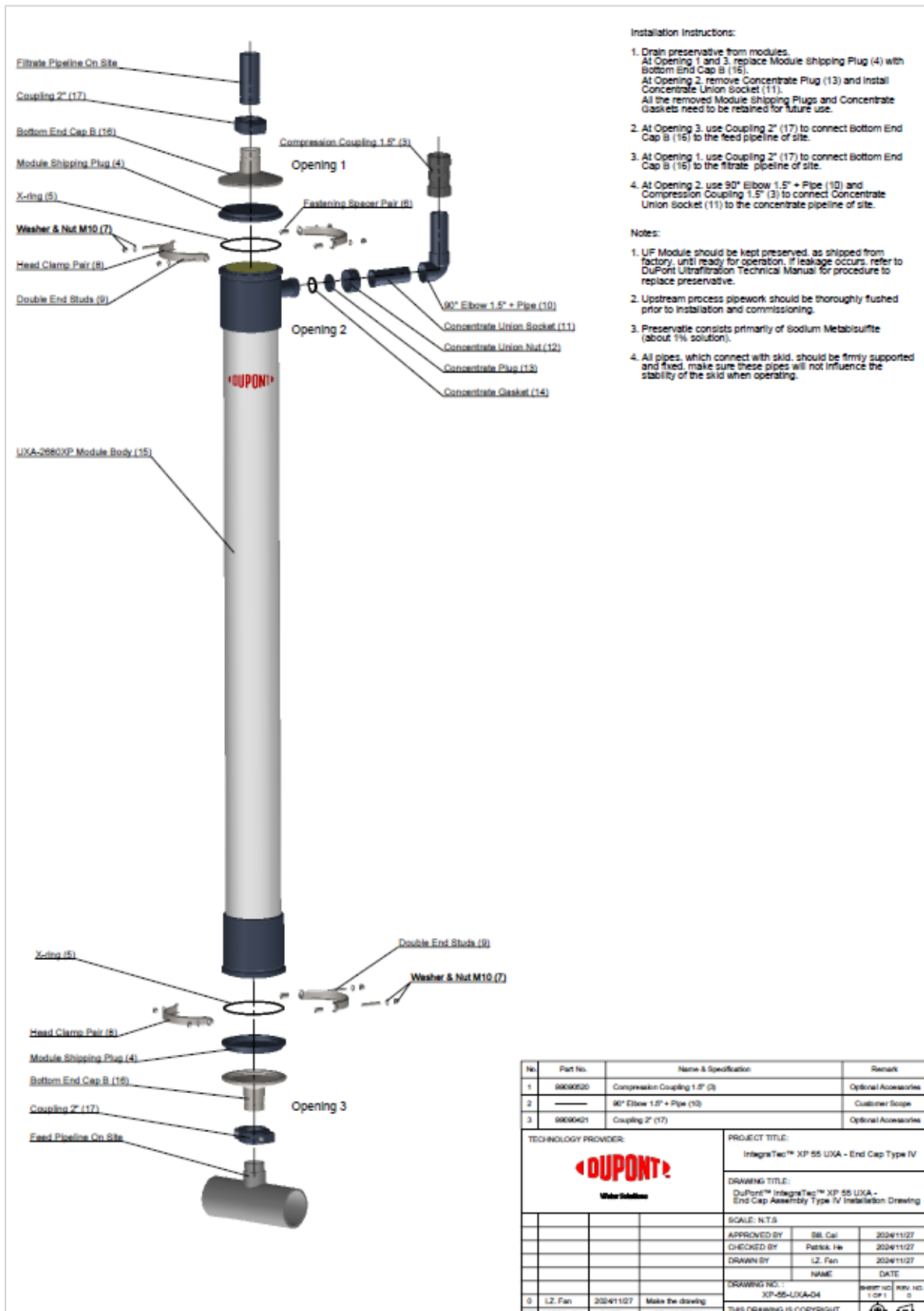


Figure 10. DuPont™ IntegraTec™ XP 55 UXA - End Cap Assembly Type IV Installation Drawing



Have a question? Contact us at:
www.dupont.com/water/contact-us

All information set forth herein is for informational purposes only. This information is general information and may differ from that based on actual conditions. Customer is responsible for determining whether products and the information in this document are appropriate for Customer's use and for ensuring that Customer's workplace and disposal practices are in compliance with applicable laws and other government enactments. The product shown in this literature may not be available for sale and/or available in all geographies where DuPont is represented. The claims made may not have been approved for use in all countries. Please note that physical properties may vary depending on certain conditions and while operating conditions stated in this document are intended to lengthen product lifespan and/or improve product performance, it will ultimately depend on actual circumstances and is in no event a guarantee of achieving any specific results. DUPONT ASSUMES NO OBLIGATION OR LIABILITY FOR THE INFORMATION IN THIS DOCUMENT. References to "DuPont" or the "Company" mean the DuPont legal entity selling the products to Customer unless otherwise expressly noted. NO WARRANTIES ARE GIVEN; ALL IMPLIED WARRANTIES OF MERCHANTABILITY OR FITNESS FOR A PARTICULAR PURPOSE ARE EXPRESSLY EXCLUDED. No freedom from infringement of any patent or trademark owned by DuPont or others is to be inferred. DuPont™, the DuPont Oval Logo, and all trademarks and service marks denoted with ™, SM or ® are owned by affiliates of DuPont de Nemours, Inc. unless otherwise noted. © 2025 DuPont. All right reserved